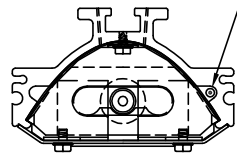


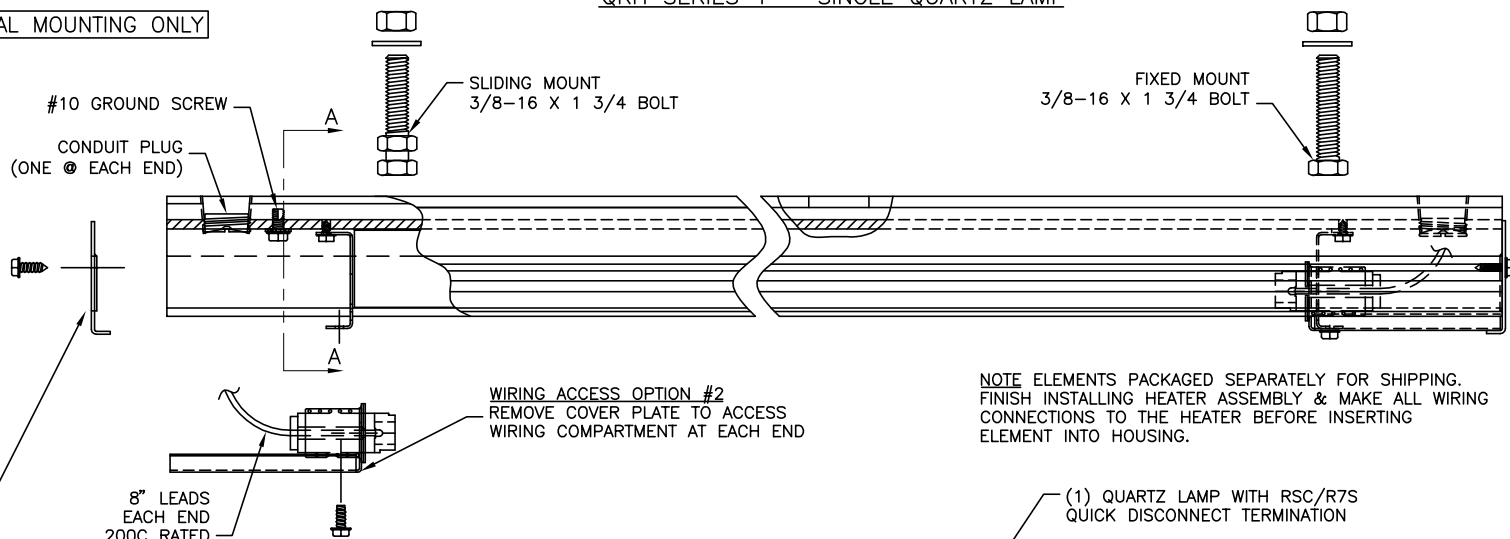
QRH SERIES 1 – SINGLE QUARTZ LAMP

CAUTION: FOR HORIZONTAL MOUNTING ONLY

FOR SINGLE END WIRING:
INSTALL CROSSOVER WIRE
16GA 450°C 600V MIN
BEHIND REFLECTOR



SECTION A-A



NOTE ELEMENTS PACKAGED SEPARATELY FOR SHIPPING. FINISH INSTALLING HEATER ASSEMBLY & MAKE ALL WIRING CONNECTIONS TO THE HEATER BEFORE INSERTING ELEMENT INTO HOUSING.

(1) QUARTZ LAMP WITH RSC/R7S QUICK DISCONNECT TERMINATION

WIRING ACCESS OPTION #1
REMOVE END PLATE TO ACCESS
WIRING COMPARTMENT AT EACH END

8" LEADS
EACH END
200C RATED

1/2" TRADE SIZE K-O
(ONE @ EACH END)

"WARNING:"

DO NOT USE COPPER WIRE TO MAKE CONNECTIONS INSIDE THIS HEATER. HIGH TEMPERATURES WILL OXIDIZE COPPER. USE OF NICKEL PLATED OR NICKEL CLAD INSULATED COPPER WIRE IS RECOMMENDED. WIRE INSULATION RATING MUST BE SUITABLE FOR THE AMBIENT TEMPERATURE OF THE WIRING INSTALLATION. AMPACITY & VOLTAGE RATINGS SHOULD BE IN ACCORDANCE WITH NEC/NFPA (NATIONAL ELECTRICAL CODE) & ALL OTHER LOCAL REGULATIONS.

LAMP INSTALLATION & MAINTENANCE INSTRUCTIONS

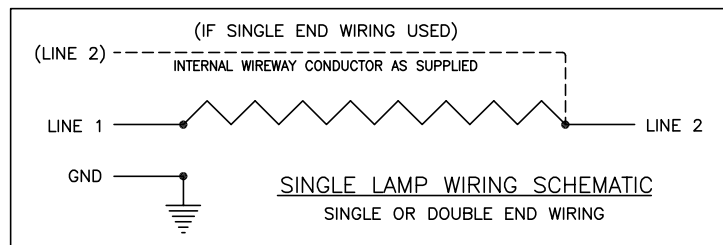
- LAY UNIT FACE UP AND USE EITHER METHOD #1 OR #2 TO ACCESS WIRING COMPARTMENT AT EACH END. INSTALL ALL LINE WIRING AND FITTINGS AS REQUIRED FOR INSTALLATION AT THIS TIME. REPLACE COVERS OR END PLATES BEFORE INSTALLING QUARTZ LAMP.
- CAREFULLY REMOVE QUARTZ LAMP FROM SHIPPING CARTON. WEAR LINT-FREE OR LATEX GLOVES WHEN HANDLING LAMP. INSERT ONE END OF LAMP INTO QUICK CONNECT RSC/R7S TERMINAL AND GENTLY PRESS IN ON CERAMIC SOCKET. PRESS IN ON CERAMIC SOCKET AT OTHER END AND INSERT OTHER END OF LAMP INTO THAT TERMINAL. THE CERAMIC SOCKETS AT EITHER END MUST BE ABLE TO MOVE FREELY IN ORDER TO MAINTAIN GOOD MECHANICAL AND ELECTRICAL CONTACT WITH THE END OF THE QUARTZ LAMP. IF NOT, PULL SOCKET OUT MANUALLY UNTIL BOTH ENDS OF LAMP ARE FIRMLY CONNECTED TO CERAMIC SOCKETS. VERIFY LAMP IS FIRMLY CONNECTED BEFORE APPLYING POWER.
- KEEP QUARTZ LAMPS AND ALUMINUM REFLECTORS CLEAN TO MAINTAIN GOOD HEATER LIFE. USE A CLEAN, LINT-FREE CLOTH AND ISOPROPYL ALCOHOL TO REMOVE DIRT, OIL, FINGERPRINTS, OR DUST.
- QUARTZ LAMPS HAVE A HIGH INRUSH CURRENT – TYPICALLY 10 TO 15 TIMES THE STEADY STATE CURRENT FOR NO MORE THAN 0.2 SECONDS. DO NOT USE FAST RESPONSE FUSES.
- CAUTION:
DO NOT MOUNT HEATER HOUSING CLOSER THAN 6" TO ANY STRUCTURAL OR INSULATING MATERIAL THAT DOES NOT HAVE AT LEAST A 200°C CONTINUOUS TEMPERATURE RATING

WARNING

HAZARD OF ELECTRIC SHOCK. INSTALLATION MUST BE GROUNDED TO EARTH TO AVOID SHOCK HAZARD. DISCONNECT POWER TO INSTALLATION BEFORE SERVICING OR INSTALLING HEATER.

DANGER – FIRE HAZARD

THESE HEATERS ARE NOT FOR USE IN ATMOSPHERES WHERE FLAMMABLE OR COMBUSTIBLE VAPORS, DUST, GASES, OR LIQUIDS ARE PRESENT AS DEFINED IN THE NATIONAL ELECTRICAL CODE. WHERE SOLVENTS, WATER, ETC. ARE BEING EVAPORATED FROM THE PROCESS, IT IS NECESSARY TO PROVIDE SUBSTANTIAL QUANTITIES OF VENTILATING AIR TO CARRY AWAY ALL RESULTING VAPORS.



TITLE:			
QRH UNIVERSAL 2000 RADIANT HEATER INSTALLATION, WIRING, & PARTS ASSEMBLY NEMA 1 HOUSING – SERIES 1			
DRAWN BY:	APPROVED:	REV:	DATE:
JWG	GDS	2	3/15/13
DRAWING NUMBER:		IDP-129-106	

TEMPCO
www.tempeco.com

TEMPCO Electric Heater Corporation
607 N. Central Ave.
Wood Dale, IL 60191-1452 U.S.A.
Email: info@tempeco.com