

CRA SERIES 8 GEMINI RADIANT HEATER FIELD INSTALLATION, WIRING, AND PARTS ASSEMBLY

NEMA 1 HOUSING – DUAL WINDING QUARTZ HEATER

HOUSING PARTS GENERAL ASSEMBLY



TEMPCO ELECTRIC CORP  
607 N CENTRAL AVE  
WOOD DALE, IL 60191, USA

**WARNING: FOR USE IN HORIZONTAL POSITION ONLY**

HIGH TEMPERATURE WIRE AND REPLACEMENT PARTS ARE AVAILABLE FROM TEMPCO. IF ELEMENT IS TO BE REPLACED IT IS RECOMMENDED THAT A NEW REFLECTOR BE ORDERED ALSO. CONTACT FACTORY WITH HEATER P/N, WATTS, AND VOLTAGE REQUIRED WHEN ORDERING REPLACEMENT PARTS.

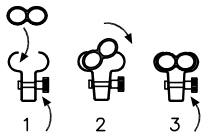
CLEAN REFLECTOR PERIODICALLY. DO NOT USE STRONG ALKALI CLEANERS ON THE ALUMINIZED STEEL REFLECTOR AS IT WILL DULL THE FINISH. A MILD SOAP & WATER SOLUTION IS RECOMMENDED.

**DANGER: HAZARD OF FIRE.** THESE HEATERS ARE NOT FOR USE IN ATMOSPHERES WHERE FLAMMABLE OR COMBUSTIBLE VAPORS, GASES, OR LIQUIDS ARE PRESENT AS DEFINED IN THE NATIONAL ELECTRICAL CODE. WHERE SOLVENTS, WATER, ETC. ARE BEING EVAPORATED FROM COOKING OR A PROCESS, IT IS NECESSARY TO PROVIDE SUBSTANTIAL QUANTITIES OF VENTILATING AIR TO CARRY AWAY ALL RESULTING VAPORS.

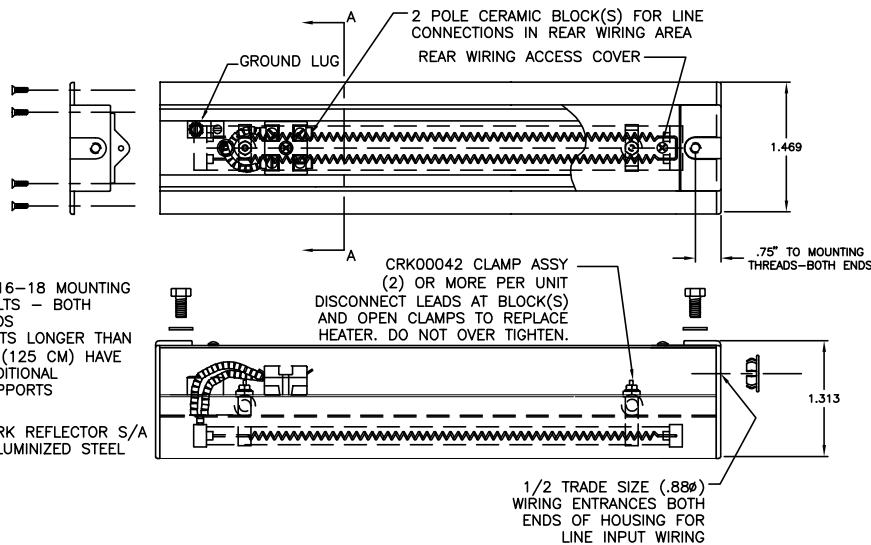
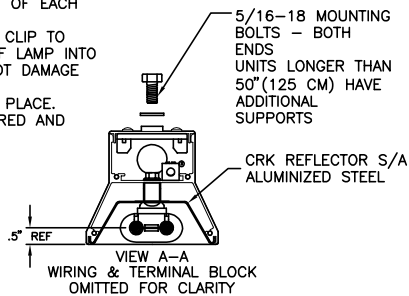
BE SURE ALL ELECTRICAL CONNECTIONS ARE TIGHTLY MADE. MAKE SURE ALL CONDUCTORS ARE PROPERLY INSULATED AND ROUTED TO ALLOW FOR EXPANSION AND CONTRACTION OF THE UNIT.

**CAUTION:** BURN HAZARD – HEATER HOUSING CAN REACH TEMPERATURES OF 302°F(150°C) OR HIGHER IN OPERATION. DO NOT MOUNT HEATER CLOSER THAN 12”(30CM) TO ANY STRUCTURAL MATERIAL THAT DOES NOT HAVE AT LEAST A 140°C CONTINUOUS TEMPERATURE RATING OR WITHIN 24”(60CM) ABOVE OR NEAR PERSONS, PETS, LIVESTOCK OR OTHER ANIMALS.

REPLACEMENT LAMP INSTALLATION



1. LOOSEN NUT. INSERT ONE HALF OF LAMP IN ONE HALF OF EACH CLAMP.
2. ROTATE LAMP AGAINST CLIP TO INSERT OTHER HALF OF LAMP INTO CLIPS. CLIPS WILL NOT DAMAGE LAMPS.
3. LAMP WILL SNAP INTO PLACE. ADJUST LAMP AS DESIRED AND TIGHTEN NUT.

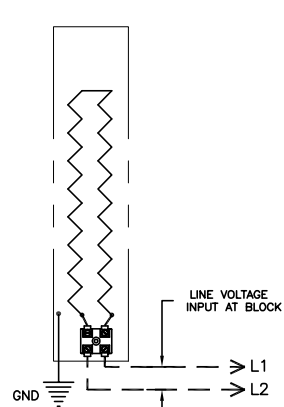


**WARNING**

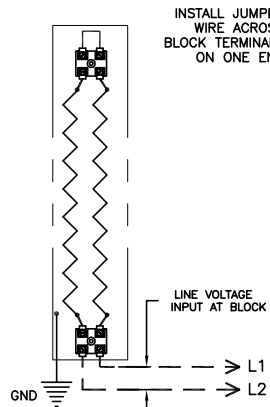
DO NOT USE COPPER WIRE TO MAKE CONNECTIONS INSIDE THIS HEATER. HIGH TEMPERATURES WILL OXIDIZE COPPER. USE OF NICKEL PLATED OR NICKEL CLAD INSULATED COPPER WIRE IS RECOMMENDED. WIRE INSULATION RATING MUST BE SUITABLE FOR THE AMBIENT TEMPERATURE OF THE WIRING INSTALLATION. AMPACITY & VOLTAGE RATINGS SHOULD BE IN ACCORDANCE WITH NEC/NFPA (NATIONAL ELECTRICAL CODE) & ALL OTHER LOCAL REGULATIONS.

**NOTE:** ELECTRICAL CONNECTIONS TO THE HEATER ARE MADE THROUGH THE 1/2 TRADE SIZE HOLES IN ENDS OF THE HOUSING. WIRING SHOULD BE RUN IN RIGID OR FLEXIBLE METAL CONDUIT AND INSTALLED IN ACCORDANCE WITH ALL LOCAL CODES THAT MAY BE APPLICABLE. ACCESS TERMINAL BLOCKS BY REMOVING BACK ENCLOSURE COVER SCREWS.

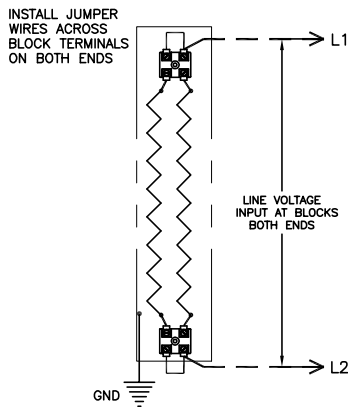
ATTACH PROPERLY AMPERAGE RATED LINE INPUT WIRING TO CERAMIC BLOCK TERMINALS USING HI-TEMP NI-STEEL RING OR SPADE TERMINALS. SOLID OR STRANDED CONDUCTORS CAN BE USED. USE ONLY INSULATED NICKEL PLATED, NICKEL CLAD, OR NICKEL CONDUCTOR. LEADWIRE RATED AT 250°C OR HIGHER INSIDE THE HEATER WIRING COMPARTMENT. USE OF 200°C WIRE IS PERMITTED ONLY IF UNIT IS USED AT AMBIENT CONDITIONS BELOW 104°F.



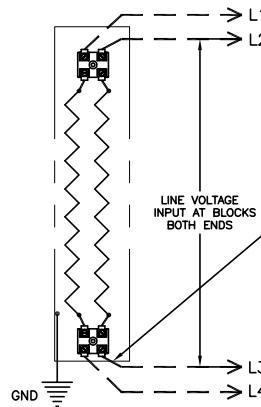
SINGLE END HEATER WIRING  
SINGLE ELEMENT



DOUBLE END HEATER WIRING  
DUAL ELEMENT SERIES WIRED



DOUBLE END HEATER WIRING  
DUAL ELEMENT PARALLEL WIRED



DOUBLE END HEATER WIRING  
DUAL CIRCUIT INDIVIDUALLY WIRED

**WARNING: HAZARD OF ELECTRIC SHOCK. INSTALLATION MUST BE GROUNDED TO EARTH TO AVOID SHOCK HAZARD. DISCONNECT POWER TO INSTALLATION BEFORE SERVICING OR INSTALLING HEATER**

TITLE:  
CRA (SERIES 8) LINEAR HOUSING  
GEMINI (FORMAT C) HEATER  
WIRING & INSTALLATION



TEMPCO Electric Heater Corporation  
607 N. Central Ave.  
Wood Dale, IL 60191-1452 U.S.A.  
Email: info@tempco.com