

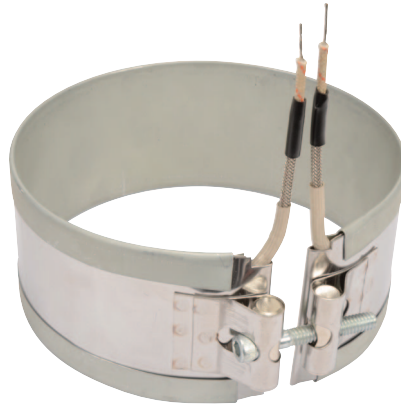
## Terminations

### Duraband® Type W3 – Single Wire Braid Leads

Continued from previous page...

Highly recommended for nozzle heating applications. The standard leads are 10" of wire braid over 12" of flexible leads with 3" of fiberglass sleeving.

*If longer leads are required, specify when ordering.*



#### One-Piece Band

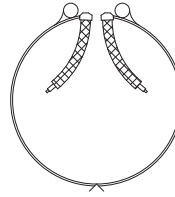
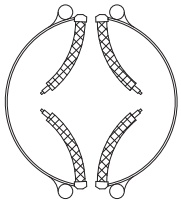
**Standard Termination Location:**  
each side of gap; edge of width

- \* **Minimum Inside Diameter:**  
3/4" (19.1 mm)
- \* **Minimum Width:** 7/8" (22.2 mm)
- \* **Maximum Volts:** 480VAC
- \* **Maximum Amps:** 12.5A

#### Two-Piece Band

**Standard Termination Location:**  
each side of each gap; edge of width

- \* **Minimum Inside Diameter:**  
2" (50.8 mm)
- \* **Minimum Width:** 3/4" (19.1 mm)
- \* **Maximum Volts:** 480VAC each half
- \* **Maximum Amps:** 12.5A each half



#### One-Piece Expandable Band

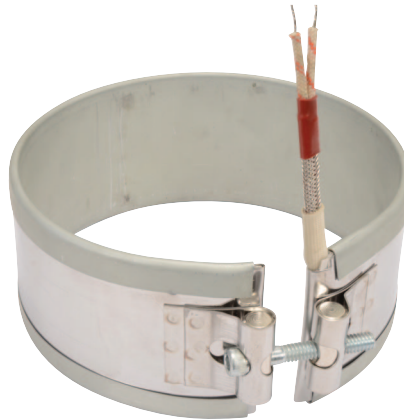
**Standard Termination Location:**  
each side of gap; edge of width

- \* **Minimum Inside Diameter:**  
2-1/2" (63.5 mm)
- \* **Minimum Width:** 1-1/4" (31.8 mm)
- \* **Maximum Volts:** 480VAC
- \* **Maximum Amps:** 12.5A

### Duraband Type W4 – Wire Braid Leads On One Side

A suitable termination for nozzle heating applications. The standard leads are 10" of wire braid over 12" of flexible leads.

*If longer leads are required, specify when ordering.*



#### One-Piece Band

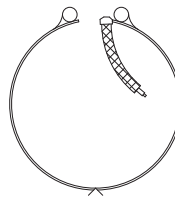
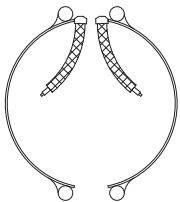
**Standard Termination Location:**  
next to gap; edge of width

- \* **Minimum Inside Diameter:**  
7/8" (22.2 mm)
- \* **Minimum Width:** 1" (25.4 mm)
- \* **Maximum Volts:** 480VAC
- \* **Maximum Amps:** 12.5A

#### Two-Piece Band

**Standard Termination Location:**  
next to same gap on each half;  
edge of width

- \* **Minimum Inside Diameter:**  
2" (50.8 mm)
- \* **Minimum Width:** 1" (25.4 mm)
- \* **Maximum Volts:** 480VAC each half
- \* **Maximum Amps:** 12.5A each half



#### One-Piece Expandable Band

**Standard Termination Location:**  
next to gap; edge of width

- \* **Minimum Inside Diameter:**  
2-1/2" (63.5 mm)
- \* **Minimum Width:** 1-1/4" (31.8 mm)
- \* **Maximum Volts:** 480VAC
- \* **Maximum Amps:** 12.5A