

Ceramic Terminal Blocks

Ceramic Terminal Blocks (Enclosed Terminals)

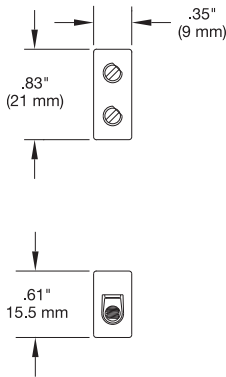
Used for wiring of heater power and thermocouple wiring in high temperature locations.

Design Features

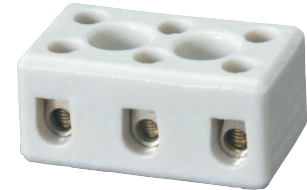
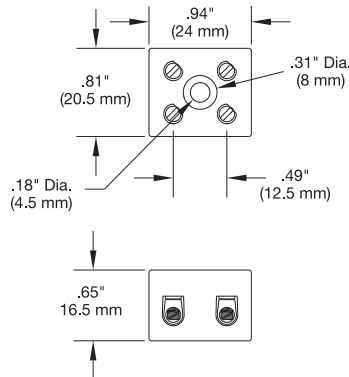
- * **Maximum Voltage:** 380 VAC
- * **Maximum Current:** 30 Amp
- * **Maximum Temperature:** 240°C/464°F
- * **Wire Gauge:** 26 to 12 ga. stranded, 26-14 solid
- * **Screw:** M3, zinc plated steel
- * **Terminal Body:** Nickel plated brass
- * **Body Material:** Porcelain
- * **Agency Approvals:** CE & VDE



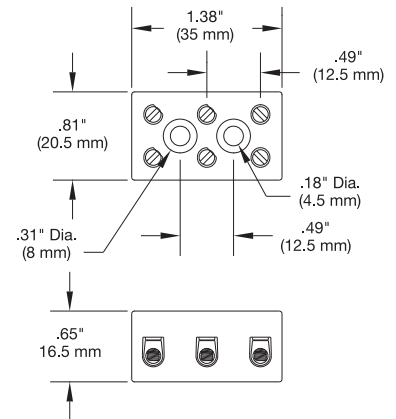
Part Number: EHD-108-116



Part Number: EHD-108-117



Part Number: EHD-108-118

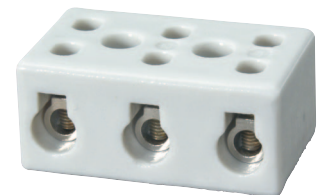
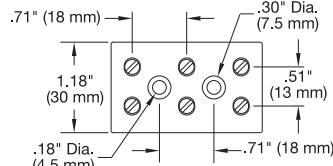
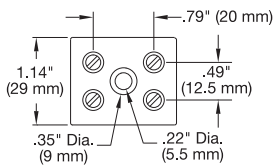


Ceramic Heavy Duty Terminal Blocks (Enclosed Terminals)

Used for wiring of heater power and thermocouple wiring in high temperature locations.

Design Features

- * **Maximum Voltage:** 600 VAC
- * **Maximum Current:** 50 Amp
- * **Maximum Temperature:** 200°C/392°F
- * **Wire Gauge:** 14 to 8 ga.
- * **Screw:** M4, zinc plated steel
- * **Terminal Body:** Nickel plated brass
- * **Body Material:** Porcelain
- * **Agency Approval:** UL, File # E69841

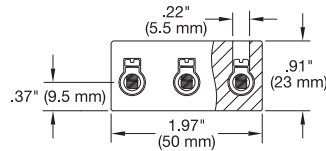
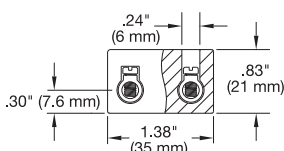


Stock Number: EHD-108-114

Stock Number: EHD-108-115

MFR Part Number: 4010-B

MFR Part Number: 4011-B



All Items Available from Stock

CONTINUED 