

Specifications & Tolerances

Standard Specifications and Tolerances of Maxistrip Heaters.

If tighter tolerances are required, consult Tempco.

PERFORMANCE RATINGS

Maximum Sheath Temperature: 650°F (343°C)

Maximum Watt Density: 20 W/in² (3.1 W/cm²)

ELECTRICAL SPECIFICATIONS

Maximum Voltage: 277VAC

Maximum Recommended Voltage w/ Leads: 240VAC

Maximum Watts: Dependent on width and length

Maximum Amperage: 25 Amps

Resistance Tolerance: +10%, -5%

Wattage Tolerance: +5%, -10%

PHYSICAL CONSTRUCTION LIMITATIONS

Widths: 1-1/2" (38.1 mm), 2-1/2" (63.5 mm), 3" (76.2 mm), 4" (101.6 mm)

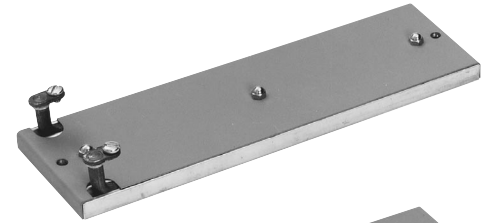
Thickness: 1/2" (12.7 mm)

Flatness: 0.005 per inch of the width

Screw Terminals

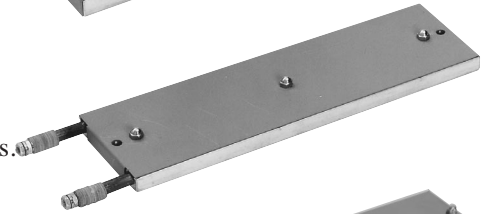
Type S Terminal Lugs

Terminal lugs with 10-32 binding head screws are the standard termination for all Maxistrip heaters.



Type T1 Straight Terminals

Straight outward screw terminals with 8-32 threads.



Type R 90° Blockhead Terminals

90° Blockhead Terminals with 10-32 threads. Special design can switch between 1800W and 900W at 240V.

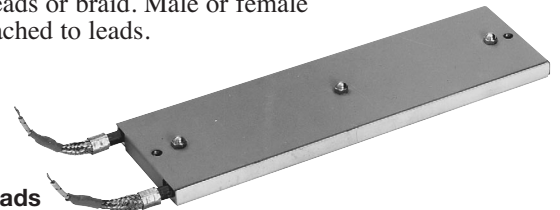


Abrasion Resistant Terminations

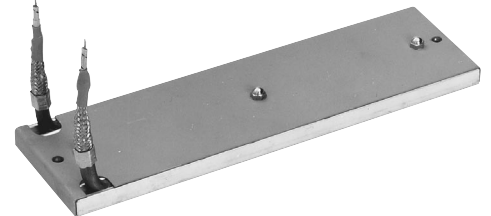
Wire braid provides strength and protection to the lead wire insulation, offering sharp bending not possible with armor cable. 20" of wire braid and 24" flexible leads are standard.

Options: Longer leads or braid. Male or female plugs attached to leads.

Type W1 Straight Wire Braid Leads



Type W2 Straight-Up Wire Braid Leads



Special Widths



By combining one or more standard width (1-1/2", 2-1/2", 3" and 4") aluminum strip heater channels, wider surface areas can be developed. Consult Tempco with your requirements.

Mounting Holes can be located only along the phantom lines between the holes shown on these drawings.

Standard Hole Diameter: 5/16"

Maximum Hole Diameter: 1/2"
(center of width only)

Mounting Holes

