



## Magnetic Contactors

### Definite Purpose Magnetic Contactors

UL and CSA Component Recognition

Short Stroke Magnets and Silver Cadmium Oxide Contacts for Long Service

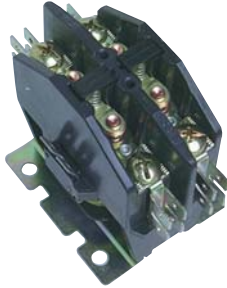
Compact for Side-By-Side Installation

Front Assembly Pressure Type Line and Load Connectors

Consult Tempco for Units Over 50 Amps or for Optional NEMA 1 Enclosure



**Note:** 4-pole model not shown



2-Pole, 30-50 Amp

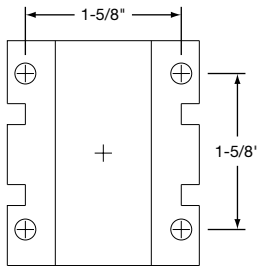


3-Pole, 30-40 Amp

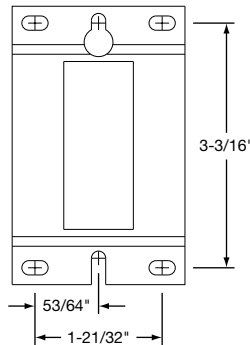


3-Pole, 50 Amp

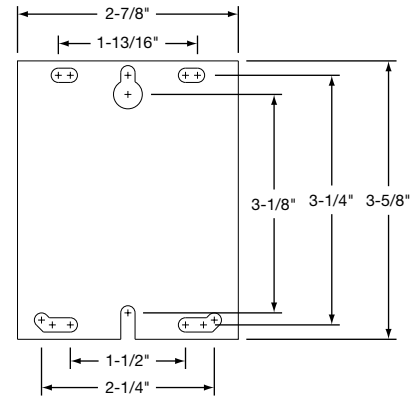
### MOUNTING PLATE DIMENSIONS



2-Pole, 30-50 Amp



3-Pole, 30-40 Amp



3-Pole, 50 Amp

### Standard Definite Purpose Contactor Specifications

Resistive Amperage	Poles	Phase	Dimensions (in)			Furnas Cross Reference	TEMPCO Part Number
			Length	Width	Depth		
30	2	1	3 3/8	2	2 27/32	45CG20A	RLM1230
35	2	1	3 3/8	2	2 27/32	45DG20A	RLM1235
40	2	1	3 3/8	2	2 27/32	45EG20A	RLM1240
35	3	3	3 3/32	2 1/4	3	42AF35A	RLM1335
40	2	1	3 3/8	2	2 27/32	42BF15A	RLM1241
40	3	3	3 3/32	2 1/4	3	42BF35A	RLM1340
40	4	3	3 3/32	2 1/8	3	42BF25A	RLM1440
50	2	1	3 3/8	2	2 27/32	42CF15A	RLM1250
50	3	3	3 3/32	2 1/4	3	42CF35A	RLM1350
50	4	3	3 3/32	2 1/8	3	42CF25A	RLM1450

### COIL VOLTAGE TABLE

Voltage	Coil Code	
	60 Hz	50 Hz
24	24	<b>1</b>
110-120	110	<b>2</b>
200-208	N/A	<b>3</b>
208-240	190-220	<b>4</b>
277	240	<b>5</b>
440-480	440	<b>6</b>
550-600	575	<b>7</b>

### Ordering Information

Take the **Part Number** for the appropriate unit (proper amps, poles, and phase) and fill in the blank with the corresponding **Coil Voltage Code** from the table above to match your application needs.

**Standard lead time is stock to 5 days.**

Product Inventory Available for Viewing and Selection @ [www.tempco.com](http://www.tempco.com)