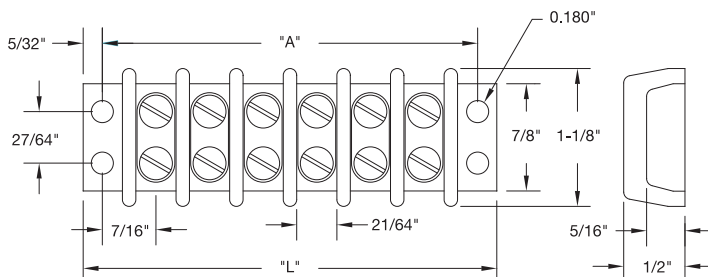


Screw Terminal Barrier Blocks for Thermocouples

Design Features:

- * Made of Glass-Filled Nylon, 350°F (177°C) max.
- * 250 VAC RMS max. Voltage Rating, 20 Amps max.
- * Supplied with 6-32 Terminal Screws
- * Available with Nickel-Plated Copper Lugs, Thermocouple Compensating Lugs or No Lugs



Ordering Code: **TBS** - ¹ ²

No. of Terminals BOX 1

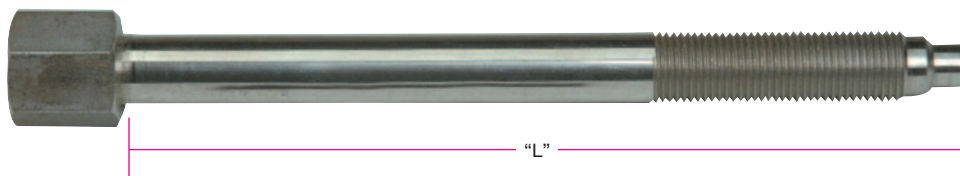
Enter **02 to 20**
(See table for available Number of Terminals)

Type of Lugs BOX 2

00 = No Lugs, Screws Supplied
10 = Nickel-Plated Copper Lugs
1 = With Thermocouple Compensating Lugs
 Enter Calibration

Number of Terminals	"A" Dim. (inches)	"L" Dim. (inches)
2	1.31	1.63
3	1.75	2.06
4	2.19	2.50
6	3.06	3.38
8	3.94	4.25
10	4.81	5.13
12	5.69	6.00
14	6.56	6.88
16	7.44	7.75
20	9.19	9.50

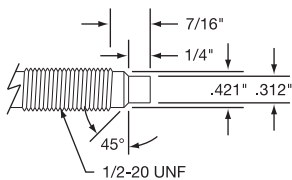
Plastic Melt Bolts



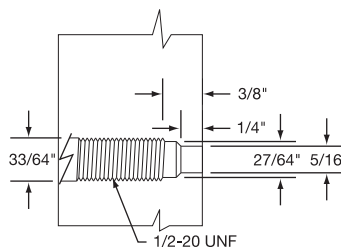
The Blank Bolt is used to seal hole if thermocouple is removed from extruder.

NOTE: All bolts except Blank Bolts are drilled to accept 1/8" diameter thermocouple.

Detailed Dimensions for Plastic Melt Bolts



Bolt-Tip Dimensions



Recommended drilling dimensions for proper mounting in extruder

Styles R & F are shown on Pages 14-10 and 14-11

Length "L"	Blank	With 1/8" Diameter Hole	With Teflon® Insert	To make Style "R" *	To make Style "R" w/Teflon® insert *	To make Style "F"	To make Style "F" w/Teflon® Insert
3" **	FAS-116-101	FAS-116-103	FAS-116-105	FAS-116-107	FAS-116-109	FAS-116-111	FAS-116-113
6" **	FAS-116-102	FAS-116-104	FAS-116-106	FAS-116-108	FAS-116-110	FAS-116-112	FAS-116-114

* Includes hardware to mount plug

** 300 series stainless steel

⚠ WARNING: Cancer and Reproductive Harm - www.P65Warnings.ca.gov.

(800) 323-6859 • Email: sales@tempco.com