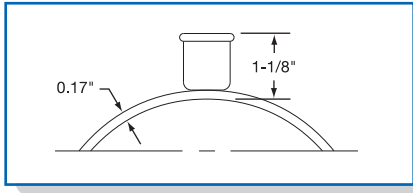
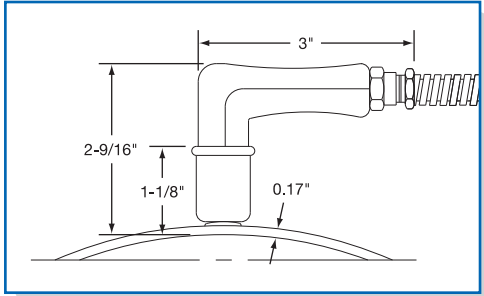


Mi-Plus® Type P1 — Quick Disconnect Plugs



Cup Assembly Only



Cup Assembly with 90° Plug

High Temperature Quick Disconnects are a simple, safe and quick way to apply power to a band heater installation. The combination of plug and cup assembly along with stainless steel armor cable or stainless steel wire braid eliminates all live exposed terminals or wiring that can be a potential hazard. The assembly is available with a straight or right-angle plug. To simplify installation, Mi-Plus band heaters with Quick Disconnects can be pre-wired with stainless steel armor or stainless steel wire braid.

- P1A** — Cup Assembly only
- P1B** — Cup Assembly with straight plug
- P1C** — Cup Assembly with 90° plug
- P1E** — Cup Assembly with straight plug and stainless steel armor cable
- P1F** — Cup Assembly with straight plug and stainless steel wire braid
- P1H** — Cup Assembly with 90° plug and stainless steel armor cable
- P1J** — Cup Assembly with 90° plug and stainless steel wire braid

The standard abrasive protection leads are 10" of protection over 12" of flexible leads. *If longer leads, armor cable or braid are required, specify when ordering.*

Type P1A Shown

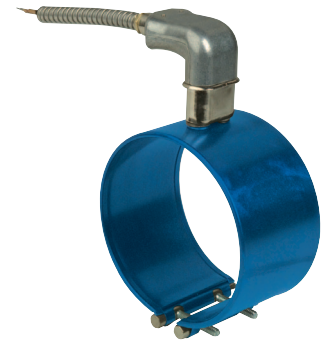


One-Piece Band

Standard Termination Location:
opposite the gap; center of width

- * **Minimum Inside Diameter:** 3" (76.2 mm)
- * **Minimum Width:** 2" (50.8 mm)
- * **Maximum Volts:** 250VAC
- * **Maximum Amps:** 16
- * **Maximum Temperature:** 392°F (200°C)

Type P1H Shown



Type P1A Shown

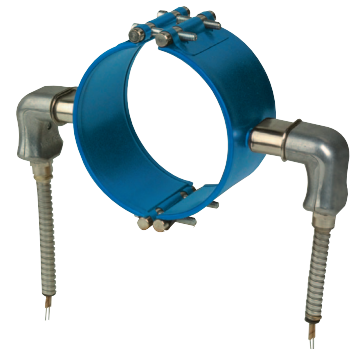


Two-Piece Band

Standard Termination Location:
center of each half; center of width

- * **Minimum Inside Diameter:** 3" (76.2 mm)
- * **Minimum Width:** 2" (50.8 mm)
- * **Maximum Volts:** 250VAC each half
- * **Maximum Amps:** 16 each half
- * **Maximum Temperature:** 392°F (200°C)

Type P1H Shown



Note: Type P1 is not available on One-Piece Expandable Mi-Plus Band Heaters