

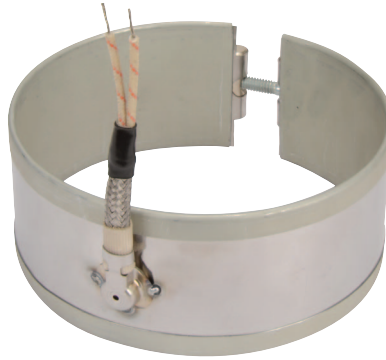
Duraband® Type W2M – Right-Angle Wire Braid Leads, 90° to Heater

Stainless Steel Wire Braid exits perpendicular to the heater centerline through a low profile stainless steel cap. This cap acts as a strain relief which protects against excessive flexing or pulling of the lead wire. The standard leads are 10" of wire braid over 12" of flexible leads.

If longer leads are required, specify when ordering.



Note: Stainless steel construction may be required for widths of 7/8" (22.2 mm) to 1-5/8" (41.3 mm).



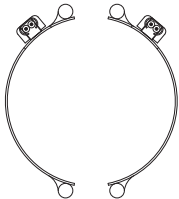
One-Piece Band

Standard Termination Location: opposite of gap; center of width

- * **Minimum Inside Diameter:** 1-1/2" (38.1 mm)
- * **Minimum Width:** 1-1/4" (31.8 mm)
- * **Maximum Volts:** 480VAC
- * **Maximum Amps:** 12.5A

Two-Piece Band

Standard Termination Location: next to same gap on each half; center of width



- * **Minimum Inside Diameter:** 2" (50.8 mm)
- * **Minimum Width:** 1-1/4" (31.8 mm)
- * **Maximum Volts:** 480VAC each half
- * **Maximum Amps:** 12.5A each half



One-Piece Expandable Band

Standard Termination Location: next to gap; center of width

- * **Minimum Inside Diameter:** 2-1/2" (63.5 mm)
- * **Minimum Width:** 1-1/4" (31.8 mm)
- * **Maximum Volts:** 480VAC
- * **Maximum Amps:** 12.5A

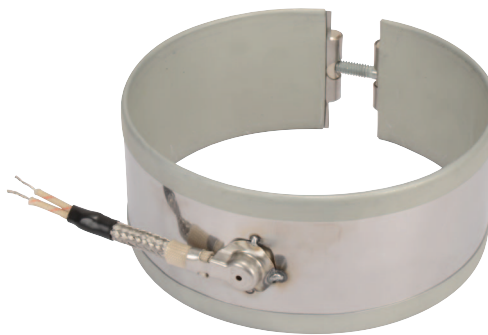
Duraband Type W5M – Right-Angle Wire Braid Leads, Parallel to Heater

Stainless Steel Wire Braid exits parallel to the heater centerline through a low profile stainless steel cap. This cap acts as a strain relief which protects against excessive flexing or pulling of the lead wire. The standard leads are 10" of wire braid over 12" of flexible leads.

If longer leads are required, specify when ordering.



Note: Stainless steel construction may be required for widths of 7/8" (22.2 mm) to 1-5/8" (41.3 mm).



Selection

TERMINATION

Guide

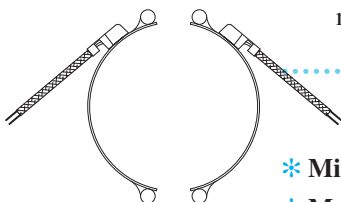
One-Piece Band

Standard Termination Location: opposite of gap; center of width

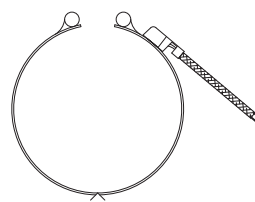
- * **Minimum Inside Diameter:** 1-1/2" (38.1 mm)
- * **Minimum Width:** 1-1/4" (31.8 mm)
- * **Maximum Volts:** 480VAC
- * **Maximum Amps:** 12.5A

Two-Piece Band

Standard Termination Location: next to same gap on each side; center of width



- * **Minimum Inside Diameter:** 2" (50.8 mm)
- * **Minimum Width:** 1-1/4" (31.8 mm)
- * **Maximum Volts:** 480VAC each half
- * **Maximum Amps:** 12.5A each half



One-Piece Expandable Band

Standard Termination Location: next to gap; center of width

- * **Minimum Inside Diameter:** 2-1/2" (63.5 mm)
- * **Minimum Width:** 1-1/4" (31.8 mm)
- * **Maximum Volts:** 480VAC
- * **Maximum Amps:** 12.5A