

## Ceramic Band

### Optional Igloo™ Ceramic Covers for Heaters with Screw Terminals

Igloo™ Ceramic Terminal Covers consist of two individual ceramic parts. They are available with all types of insulation, construction styles, and clamping variations. Unlike conventional ceramic caps, Igloo fully insulates any standard #10 terminal lugs used for electrical hook-ups.

#### Limitations

**One-Piece Band with Type T2 or Type T3 Screw Terminals**  
**Min. ID:** 2" (50.8 mm) **Min. Width:** 1" (25.4 mm)

**Two-Piece Band with Type T2 or Type T3 Screw Terminals**  
**Min. ID:** 4" (101.6 mm) **Min. Width:** 1" (25.4 mm)

**Reverse Band with Type T3 Screw Terminals**  
**Min. ID:** 5-1/2" (139.7 mm)

Three types of Igloo™ bases are available:

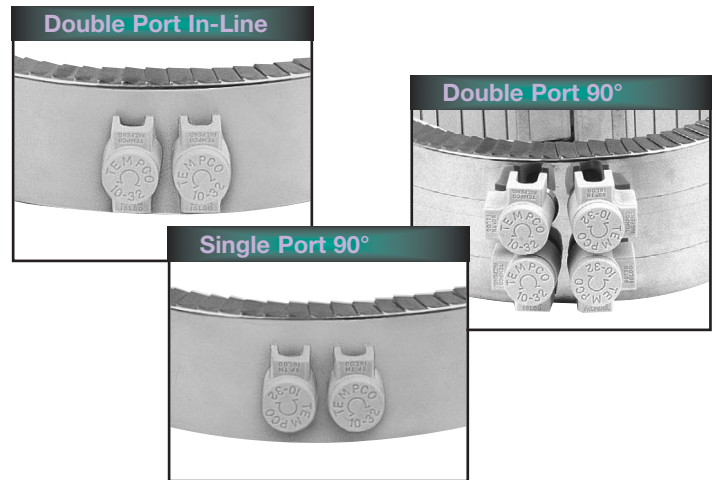
**Type C6** — Double Port In-Line P/N CER-101-104

**Type C7** — Double Port 90° P/N CER-101-106

**Type C8** — Single Port P/N CER-101-107

Igloo™ caps are available in the following screw terminal size:

**10-32** — P/N CER-102-101

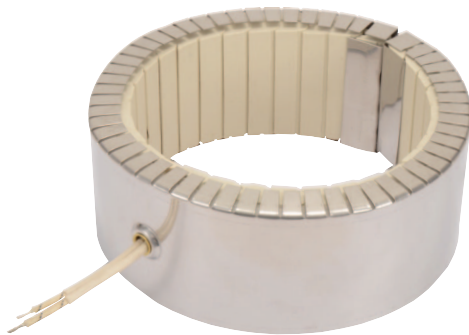


**Exposed electrical wiring on band heater installations is a violation of Electrical Safety Codes including O.S.H.A.**

### Ceramic Band Type L1 – Straight Lead Wires

Type L1 Straight Lead Wires are available with all types of insulation, construction styles, and clamping variations. They are used primarily on small diameter bands where clearance is limited. If applicable, screw terminals should always be specified due to the high heat generated by ceramic bands. The standard flexible leads are 10" long.

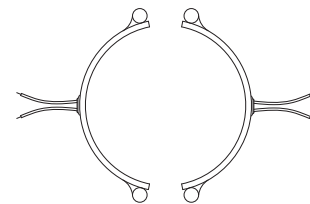
*If longer leads are required, specify when ordering.*



#### One-Piece Band

**Standard Termination Location:**  
opposite the gap; center of width

- \* Minimum Inside Diameter: 2" (50.8 mm)
- \* Minimum Width: 1" (25.4 mm)
- \* Maximum Volts/Amps: 480VAC/12.5A



#### Two-Piece Band

**Standard Termination Location:**  
center of each half; center of width

- \* Minimum Inside Diameter: 4" (101.6 mm)
- \* Minimum Width: 1" (25.4 mm)
- \* Maximum Volts/Amps: 480VAC/12.5A each

*Available on Reverse Band*

- \* Minimum Inside Diameter: 5-1/2" (139.7 mm)