

## Ceramic Band

### Ceramic Band Type W2M – Right-Angle Wire Braid Leads, 90° to Heater

Stainless Steel Wire Braid exits perpendicular to the heater centerline through a low profile stainless steel cap. This cap acts as a strain relief which protects against excessive flexing or pulling of the lead wire. The standard leads are 10" of wire braid over 12" of flexible leads.

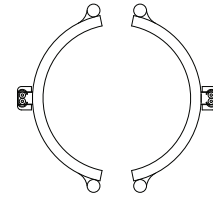
*If longer leads are required, specify when ordering.*



#### One-Piece Band

**Standard Termination Location:**  
opposite the gap; center of width

- \* Minimum Inside Diameter: 2" (50.8 mm)
- \* Minimum Width: 1" (25.4 mm)
- \* Maximum Volts/Amps: 480VAC/12.5A



#### Two-Piece Band

**Standard Termination Location:**  
center of each half; center of width

- \* Minimum Inside Diameter: 4" (101.6 mm)
- \* Minimum Width: 1" (25.4 mm)
- \* Maximum Volts/Amps: 480VAC/12.5A each half

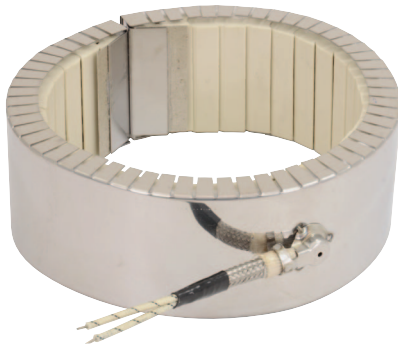
*Available on Reverse Band*

- \* Minimum Inside Diameter: 5-1/2" (139.7 mm)

### Ceramic Band Type W5M – Right-Angle Wire Braid Leads, Parallel to Heater

Stainless Steel Wire Braid exits parallel to the heater centerline through a low profile stainless steel cap. This cap acts as a strain relief which protects against excessive flexing or pulling of the lead wire. The standard leads are 10" of wire braid over 12" of flexible leads.

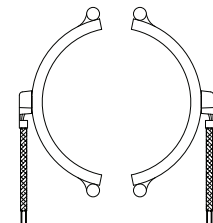
*If longer leads are required, specify when ordering.*



#### One-Piece Band

**Standard Termination Location:**  
opposite the gap; center of width

- \* Minimum Inside Diameter: 2" (50.8 mm)
- \* Minimum Width: 1" (25.4 mm)
- \* Maximum Volts/Amps: 480VAC/12.5A



#### Two-Piece Band

**Standard Termination Location:**  
center of each half; center of width

- \* Minimum Inside Diameter: 4" (101.6 mm)
- \* Minimum Width: 1" (25.4 mm)
- \* Maximum Volts/Amps: 480VAC/12.5A each half

*Available on Reverse Band*

- \* Minimum Inside Diameter: 5-1/2" (139.7 mm)