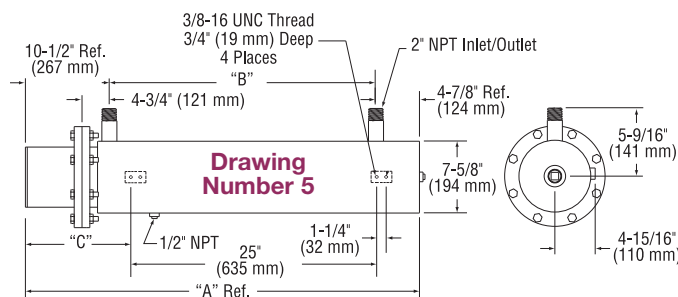
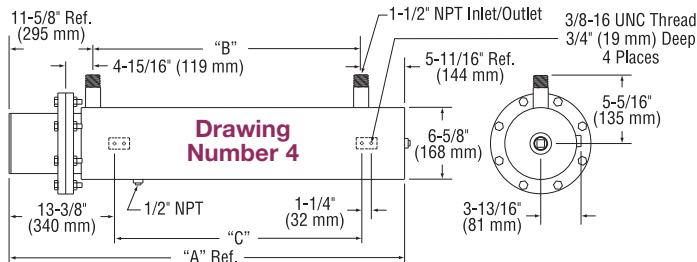
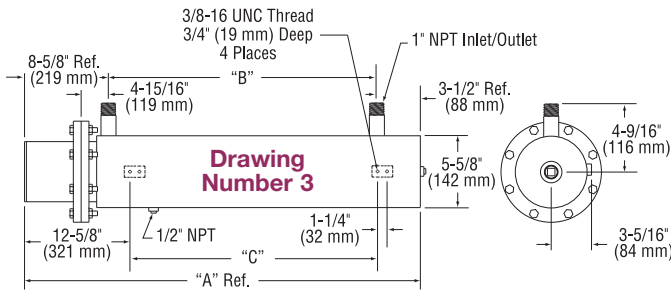
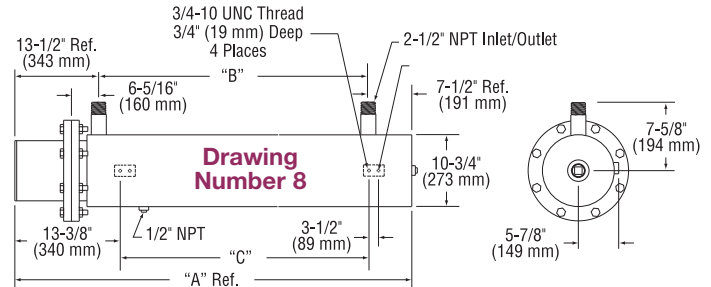
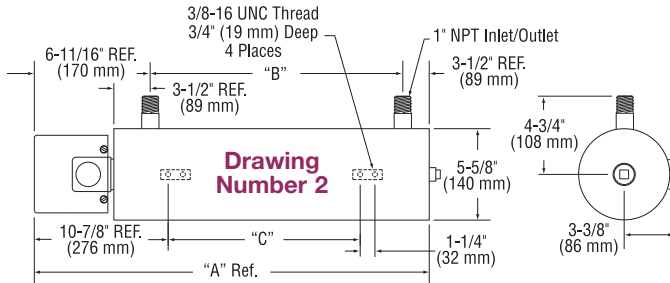
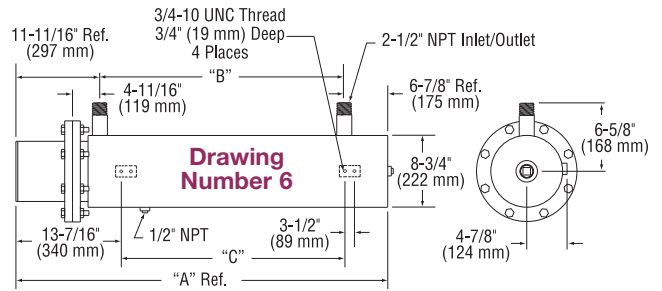
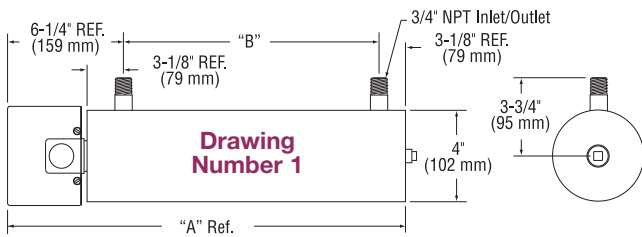


Standard (Non-Stock) Circulation Heaters



Dimensional Drawing Number

Drawing Number	"A"		"B"		"C"	
	in	mm	in	mm	in	mm
1.1	24-3/8	619	15	381		
1.2	32-3/8	822	23	584		
2.1	32-11/16	830	22-1/2	572	16-1/2	419
2.2	42-11/16	1084	32-1/2	826	26-1/2	673
2.3	55-3/16	1402	45	1143	39	991
3.1	34-5/8	879	22-1/2	572	16-1/2	419
3.2	44-5/8	1133	32-1/2	826	26-1/2	673
3.3	57-1/8	1451	45	1143	39	991
4.1	37-13/16	960	20-1/2	521	17	432
4.2	48-5/16	1227	31	787	27-1/2	699
4.3	69-5/16	1761	52	1321	48-1/2	1232
4.4	90-5/16	2294	73	1854	69-1/2	1765
5.1	45-3/8	1153	30	762	11-1/2	292
5.2	52-3/8	1330	37	940	15-1/4	387
5.3	63-7/8	1622	48-1/2	1232	21	533
5.4	77-1/4	1962	61-7/8	1572	27-1/2	698
6.1	39-1/16	992	20-1/2	521	17	432
6.2	49-9/16	1259	31	787	27-1/2	699
6.3	70-9/16	1792	52	1321	48-1/2	1232
6.4	91-9/16	2326	73	1854	69-1/2	1765
8.1	46	1168	24-11/16	627	21-3/16	538
8.2	53-3/4	1365	32-11/16	830	29-3/16	741
8.3	60-3/4	1543	39-11/16	1008	36-3/16	919
8.4	68-3/4	1746	47-5/16	1202	43-13/16	1113
8.5	77-7/8	1978	56-13/16	1443	53-5/16	1354
8.6	86-7/8	2207	65-13/16	1672	62-5/16	1583
8.7	96-7/8	2461	75-13/16	1926	72-5/16	1837



Note: Circulation heater mounting lug design and location in the assembly drawings shown are standard. Designs can be modified to fit customer installation. Consult Tempco with your requirements.

Ordering Information

See Page 11-69 for complete Ordering Information.