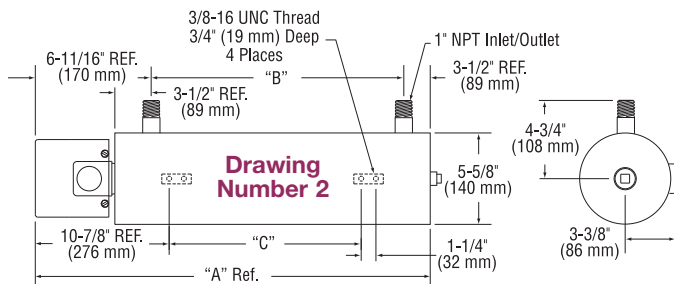


Standard (Non-Stock) Circulation Heaters

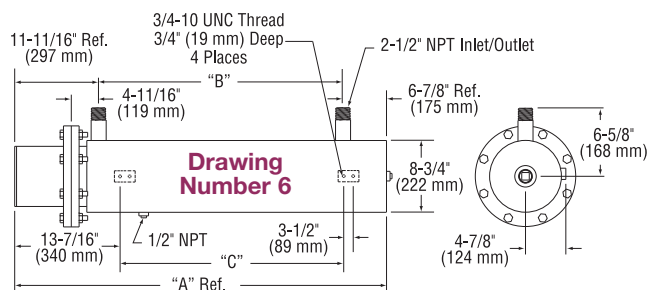
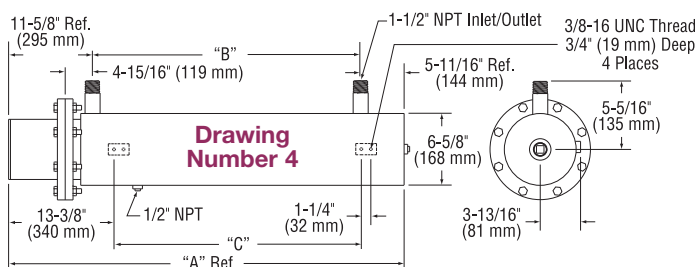
Dimensional Drawing Number



Drawing Number	"A"		"B"		"C"	
	in	mm	in	mm	in	mm
2.1	32-11/16	830	22-1/2	572	16-1/2	419
2.2	42-11/16	1084	32-1/2	826	26-1/2	673
2.3	55-3/16	1402	45	1143	39	991
4.1	37-13/16	960	20-1/2	521	17	432
4.2	48-5/16	1227	31	787	27-1/2	699
4.3	69-5/16	1761	52	1321	48-1/2	1232
4.4	90-5/16	2294	73	1854	69-1/2	1765
6.1	39-1/16	992	20-1/2	521	17	432
6.2	49-9/16	1259	31	787	27-1/2	699
6.3	70-9/16	1792	52	1321	48-1/2	1232
6.4	91-9/16	2326	73	1854	69-1/2	1765



Note: Circulation heater mounting lug design and location in the assembly drawings shown are standard. Designs can be modified to fit customer installation. Consult Tempco with your requirements.



Ordering Information

Catalog Heaters

Order by Part Number for catalog heaters listed on pages 11-51 through 11-68.

Standard lead time is 4-5 weeks.

Custom Engineered/Manufactured Heaters

For sizes and ratings not listed, **TEMPCO** will design and manufacture a Circulation Heater to meet your requirements. **Please Specify** the following:

- Application, including operating temperature/pressure
- Wattage, Voltage and Phase
- Screw Plug or Flange Size and Material
- Element Sheath Material
- Element Watt Density
- Element Immersion Length
- Electrical Enclosure Type
- Thermostat— if required
- Vessel Material
- Additional Insulation
- Flow Control Baffles
- Other Optional Features

WARNING: Cancer and Reproductive Harm - www.P65Warnings.ca.gov.