

# Temperature Controllers



## Cartridge Type Thermostats

### Thermostatic Cartridge Type Temperature Controls

Tempco Thermostatic Temperature Controls are proven, simple, sensitive temperature controls with an adjustable setpoint. The sheath is a temperature sensor that responds to the tempera-

ture of its environment by expanding and contracting, thereby mechanically actuating a set of contacts within. Use to accurately control temperature on hundreds of applications.

### Specifications

#### Temperature Range:

1/4" dia. models: -100 to 500°F (-73 to 260°C)  
1/2" and 5/8" dia. models: -100 to 600°F (-73 to 315°C)

#### Tube Shell Diameters:

1/4" dia. model: 0.249" +.000/-.004" actual  
1/2" dia. model: 0.499" +.000/-.004" actual  
5/8" dia. model: 0.625" +.000/-.004" actual

**Contact Action:** Slow make and break

**External Materials:** 304 Stainless Steel

**Agency Approvals:**



#### Sensitivity:

1/4" dia. model: As low as 1°F depending on application  
1/2" and 5/8" dia. models: As low as 0.5°F depending on application

**Accuracy:** Dependent on application

#### Standard Termination:

1/4" dia. model: 8" long - #26 ga silver plated copper with Teflon® insulation  
1/2" dia. model: 8" long - #20 ga stranded nickel clad copper with fiberglass insulation  
5/8" dia. model: 8" long - #16 ga stranded nickel clad copper with fiberglass insulation

### Standard Stock Thermostatic Controls

Insert Dia.	Contact Length	Action on Temp. Rise	Electric Rating (Amp-Volts)	Part Number
5/8"	3 5/8"	Open (NC)	10A@120VAC, 5A@240VAC	TEV01500
		Close (NO)	2A-120 VDC	TEV01501
1/2"	2 1/2"	Open (NC)	5A@120VAC, 3A@240VAC	TEV01400
		Close (NO)	1A@120VDC	TEV01401
*1/4"	1 1/16"	Open (NC)	1A@120VAC	TEV01200
		Close (NO)	1A@120VAC	TEV01201
5/8"	3 7/16"	Open (NC)	10A@120VAC, 5A@240VAC	TEV02500
		Close (NO)	2A-120 VDC	TEV02501
1/2"	2 5/16"	Open (NC)	5A@120VAC, 3A@240VAC	TEV02400
		Close (NO)	1A@120VDC	TEV02401
5/8"	3"	Open (NC)	10A@120VAC, 5A@240VAC	TEV03500
		Close (NO)	2A-120 VDC	TEV03501
1/2"	2"	Open (NC)	5A@120VAC, 3A@240VAC	TEV03400
		Close (NO)	1A@120VDC	TEV03401
*1/4"	3/4"	Open (NC)	1A@120VAC	TEV03200
		Close (NO)	1A@120VAC	TEV03201
5/8"	3"	Open (NC)	10A@120VAC, 5A@240VAC	TEV04500
		Close (NO)	2A-120 VDC	TEV04501
1/2"	2"	Open (NC)	5A@120VAC, 3A@240VAC	TEV04400
		Close (NO)	1A@120VDC	TEV04401
*1/4"	3/4"	Open (NC)	1A@120VAC	TEV04200
		Close (NO)	1A@120VAC	TEV04201
5/8"	3 5/16"	Open (NC)	10A@120VAC, 5A@240VAC	TEV05500
		Close (NO)	2A-120 VDC	TEV05501
1/2"	2 5/16"	Open (NC)	5A@120VAC, 3A@240VAC	TEV05400
		Close (NO)	1A@120VDC	TEV05401
*1/4"	1 1/4"	Open (NC)	1A@120VAC	TEV05200
		Close (NO)	1A@120VAC	TEV05201

\*1/4" Thermostatic Controls have been discontinued and will no longer be available once stock has been depleted.

### Ordering Information

State part number and special features if required. For special Thermostatic Controls, consult Tempco.

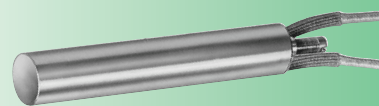
- \* The 1/2" and 5/8" dia. models are UL recognized.
- \* The 5/8" dia. model is CSA certified.
- \* Factory pre-set temperature setpoint: specify temperature setpoint.
- \* Extra lead length: specify length required.
- \* Extended shell length, with sensitivity at the top or bottom: specify length required and sensitivity.

**⚠ WARNING:** Cancer and Reproductive Harm - [www.P65Warnings.ca.gov](http://www.P65Warnings.ca.gov).

### Design Features

- \* Flexible armor cable over leads: blockhead style B only. Specify length required.
- \* Moisture resistant seal.
- \* Moisture resistant or explosion resistant, N7, attached to a Type C coupling head thermostat; specify requirements.
- \* Ground wire attached to the shell; specify length required.

## SELECTION GUIDE



#### Type S Cartridge

Temperature controller for applications in metal, air, gas and many other mediums.



#### Type B Block Head

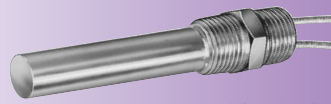
The block head style allows the thermostat to be mounted without the use of bushings.

Also excellent for making right-angle connections.



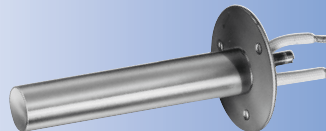
#### Type P Pipe Thread

Designed for mounting in tanks for temperature control of liquids or gases. A stainless steel bushing affords ease of mounting and a positive seal.



#### Type C Coupling Head

Designed to accept conduit or plumbing fittings to protect the screw and lead wires in adverse conditions.



#### Type F Flange

Designed to mount directly to duct or oven wall for the sensing of air or gas temperatures.

*All Items Available from Stock*