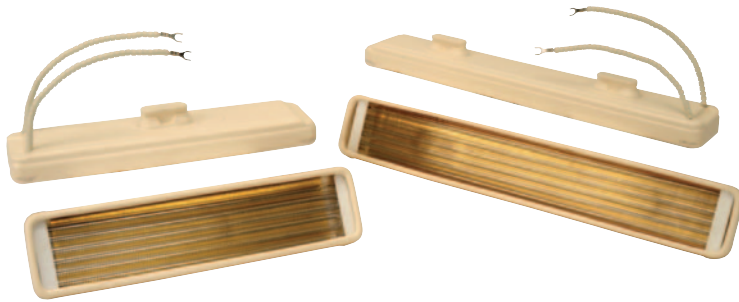


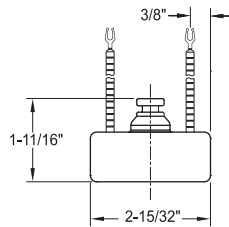


### VSR Series Medium Wave

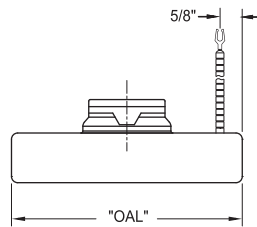


#### Design Features

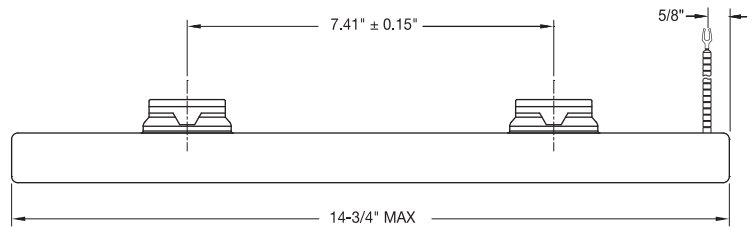
- \* All Ceramic Housing Construction
- \* Capable of delivering medium and long wavelengths in any voltage from 120 to 480 volts
- \* Available in clear tubes
- \* 24-K gold reflective surface
- \* Optional Type K thermocouple available



Heater Width



Heater Length  
Series 122, 183 and 245



Heater Length Series 367



**One-Piece Mounting Clips Standard**  
**Two-Piece Wave Mounting Clips Optional**

See page 7-14 for details.

#### Standard (Non-Stock) VSR Series

VS Glow heaters listed have 6" ceramic bead insulated leads with #8-10 spade terminals and a one-piece spring clip for mounting.

Series	Maximum Overall Length		Wattage	Voltage	Part Number
	(in)	(mm)			
122	4.90	124.5	125	230	VSR20001
			200	230	VSR20002
			250	230	VSR20003
			325	230	VSR20004
			500	230	VSR20005
183	7.36	187.0	185	230	VSR30001
			300	230	VSR30002
			375	230	VSR30003
			500	230	VSR30004
			750	230	VSR30005
245	9.82	249.5	250	230	VSR10001
			400	230	VSR10002
			500	230	VSR10003
			650	230	VSR10004
			1000	230	VSR10005
367	14.74	374.5	375	230	VSR40001
			600	230	VSR40002
			750	230	VSR40003
			1000	230	VSR40004
			1500	230	VSR40005