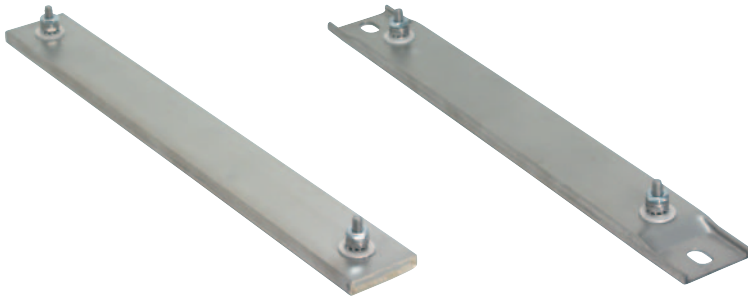


Terminations

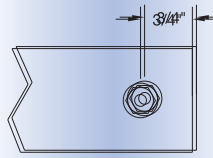
Screw Terminal Terminations

Type T1

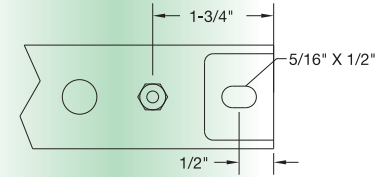
- 10-32 Screw Terminals at each end
- Available on 1" and 1-1/2" wide heaters



No Mounting Tabs

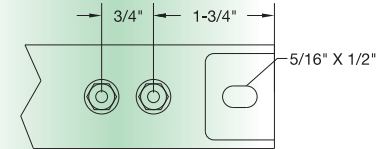
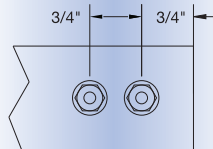
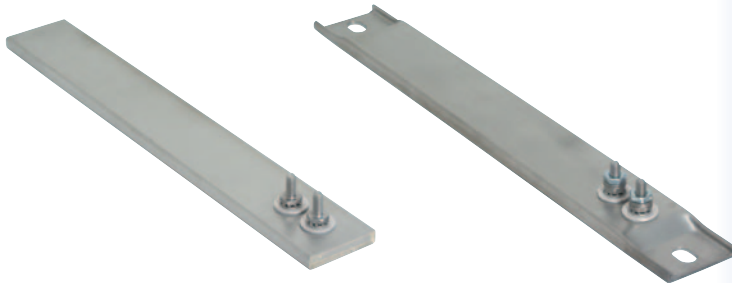


With Mounting Tabs



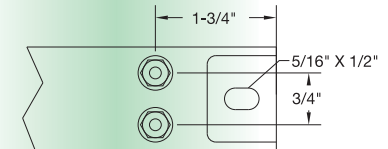
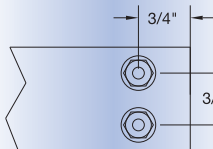
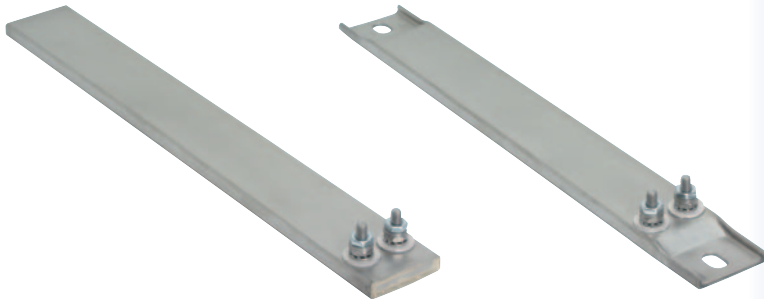
Type T2

- 10-32 Screw Terminals (Tandem) at one end
- Available on 1" and 1-1/2" wide heaters



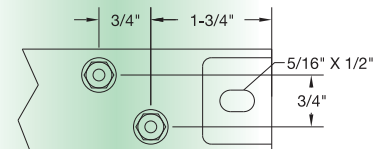
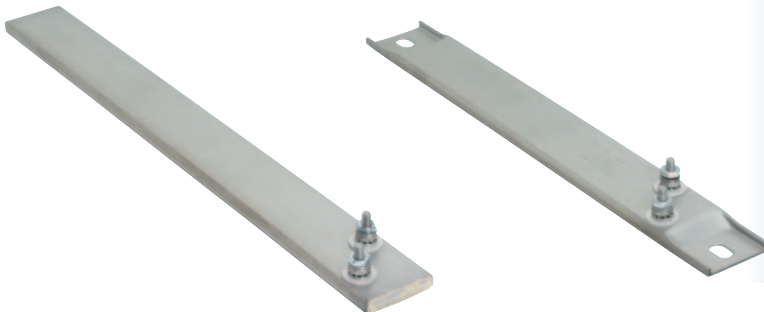
Type T3

- 10-32 Screw Terminals (Parallel) at one end
- Available on 1-1/2" wide heaters only



Type T4

- 10-32 Screw Terminals offset at one end
- Available on 1-1/2" wide heaters only



10-32 Screw Terminal Height

31/32"

