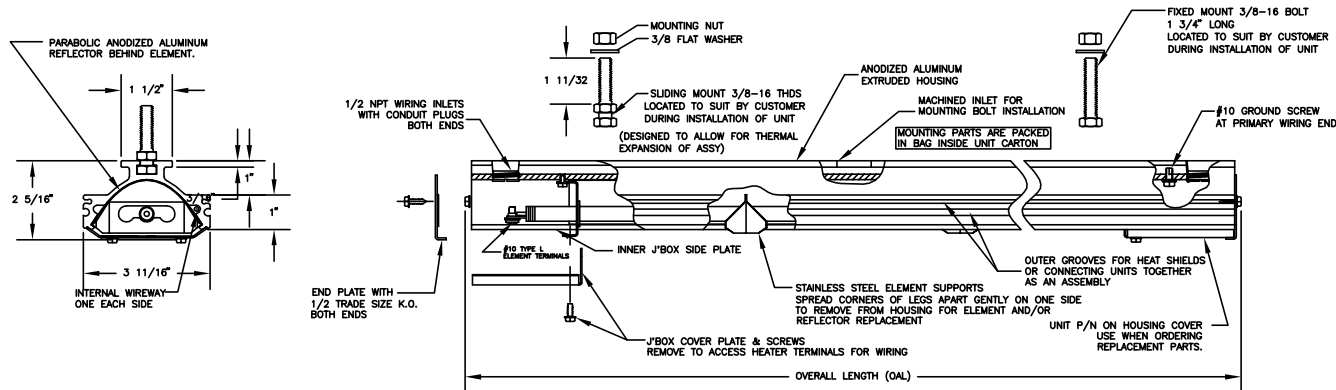


PROPRIETARY AND CONFIDENTIAL: THIS DRAWING AND THE INFORMATION WITHIN ARE PROPRIETARY TO TEMPCO ELECTRIC HEATER CORPORATION AND ARE ISSUED IN STRICT CONFIDENCE ON THE CONDITION THAT THIS DRAWING AND ANY INFORMATION CONTAINED THEREIN SHALL NOT BE COPIED, USE FOR MANUFACTURE OR SALE, OR TRANSMITTED OR DISCLOSED TO A THIRD PARTY, IN WHOLE OR IN PART, WITHOUT THE PRIOR WRITTEN CONSENT OF TEMPCO ELECTRIC HEATER CORPORATION. REMOVING THIS DOCUMENT FROM TEMPCO WITHOUT TEMPCO'S WRITTEN CONSENT IS PROHIBITED. TEMPCO ELECTRIC HEATER CORPORATION. ALL RIGHTS RESERVED.

HOUSING PARTS GENERAL ASSEMBLY



HIGH TEMPERATURE WIRE AND REPLACEMENT PARTS ARE AVAILABLE FROM TEMPCO. IF ELEMENT IS TO BE REPLACED IT IS RECOMMENDED THAT A NEW REFLECTOR BE ORDERED ALSO. CONTACT FACTORY WITH HEATER P/N, WATTS, AND VOLTAGE REQUIRED WHEN ORDERING REPLACEMENT PARTS.

CLEAN REFLECTOR PERIODICALLY. DO NOT USE STRONG ALKALI CLEANERS ON THE ALUMINUM REFLECTOR AS THEY WILL DULL THE FINISH. A MILD SOAP & WATER SOLUTION IS RECOMMENDED.

DANGER: HAZARD OF FIRE. THESE HEATERS ARE NOT FOR USE IN ATMOSPHERES WHERE FLAMMABLE OR COMBUSTIBLE DUST, VAPORS, GASES, OR LIQUIDS ARE PRESENT AS DEFINED IN THE NATIONAL ELECTRICAL CODE. WHERE SOLVENTS, WATER, ETC. ARE BEING EVAPORATED FROM THE PROCESS, IT IS NECESSARY TO PROVIDE SUBSTANTIAL QUANTITIES OF VENTILATING AIR TO CARRY AWAY ALL RESULTING VAPORS.

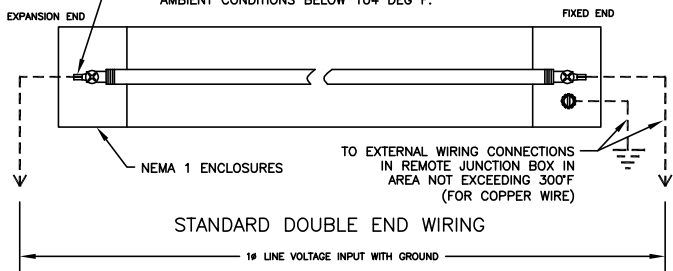
BE SURE ALL ELECTRICAL CONNECTIONS ARE TIGHTLY MADE. HOLD TERMINAL WITH PLIERS WHEN TIGHTING SCREWS. MAKE SURE ALL CONDUCTORS ARE PROPERLY INSULATED AND ROUTED TO ALLOW FOR EXPANSION AND CONTRACTION OF THE UNIT.

CAUTION: DO NOT MOUNT HEATER HOUSING CLOSER THAN 6" TO ANY STRUCTURAL MATERIAL THAT DOES NOT HAVE AT LEAST A 200C CONTINUOUS TEMPERATURE RATING.

SERIES 1 - SINGLE STRAIGHT ELEMENT

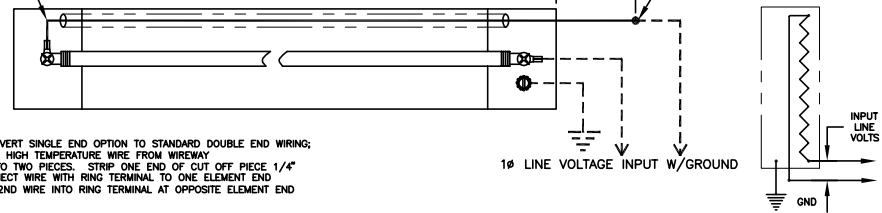
ATTACH PROPERLY RATED LINE INPUT WIRES TO BOTH ELEMENT ENDS USING THE NI-STEEL RING CRIMP CONNECTORS PROVIDED. SOLID OR STRANDED CONDUCTORS CAN BE USED. USE ONLY INSULATED NICKEL PLATED, NICKEL CLAD, OR NICKEL CONDUCTOR. 12GA FOR UNITS OVER 20A & 14GA FOR 20A OR LOWER. LEADWIRE RATED AT 250 DEG C OR HIGHER IS RECOMMENDED INSIDE THE HEATER JUNCTION BOXES. USE OF 200 DEG C WIRE IS PERMITTED IF UNIT IS USED IN AMBIENT CONDITIONS BELOW 104 DEG F.

NOTE: ALLOW FOR ELEMENT MOVEMENT WHEN WIRING INSIDE THIS END



SINGLE RETURN WIRE RATED FOR 450°C, 600V IS SUPPLIED IN INTERNAL WIREWAY FOR LINE INPUT AT GROUND LUG END 12GA FOR UNITS OVER 20A & 14GA FOR 20A OR LOWER.

CAUTION: USE 200°C OR HIGHER RATED WIRE TO CONNECT TO THIS WIRE INSIDE TRH HOUSING OR CONNECT TO FIELD WIRING USING EXTERNAL JUNCTION BOX.

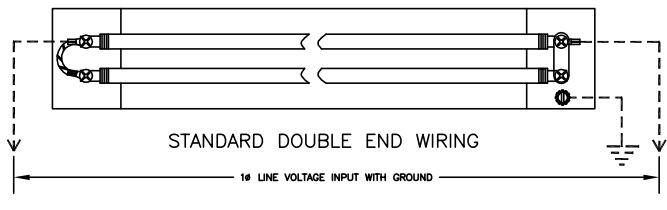


NOTE: TO CONVERT SINGLE END OPTION TO STANDARD DOUBLE END WIRING: REMOVE HIGH TEMPERATURE WIRE FROM WIREWAY CUT INTO TWO PIECES. STRIP ONE END OF CUT OFF PIECE 1/4\"/>

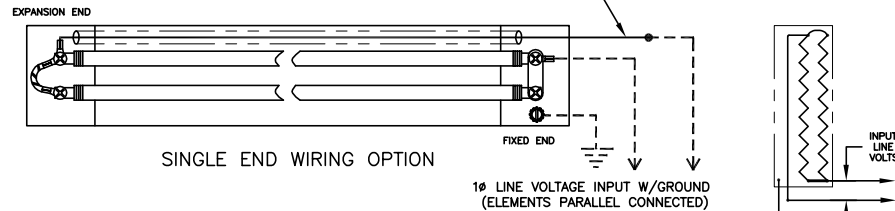
SINGLE END WIRING OPTION

SERIES 2 - DUAL STRAIGHT ELEMENT

NOTE: ELEMENT VOLTAGE = LINE VOLTAGE FOR PARALLEL CIRCUIT OPERATION.



CAUTION: USE 200°C OR HIGHER RATED WIRE TO CONNECT TO THIS WIRE INSIDE TRH HOUSING OR CONNECT TO FIELD WIRING USING EXTERNAL JUNCTION BOX.



NOTE: ELEMENT VOLTAGE = LINE VOLTAGE FOR PARALLEL CIRCUIT OPERATION.

SINGLE END WIRING OPTION

"WARNING:"
DO NOT USE COPPER WIRE TO MAKE CONNECTIONS INSIDE THIS HEATER. HIGH TEMPERATURES WILL OXIDIZE COPPER. USE OF NICKEL PLATED OR NICKEL CLAD INSULATED COPPER WIRE IS RECOMMENDED. WIRE INSULATION RATING MUST BE SUITABLE FOR THE AMBIENT TEMPERATURE OF THE WIRING INSTALLATION. AMPACITY & VOLTAGE RATINGS SHOULD BE IN ACCORDANCE WITH NEC/NFPA (NATIONAL ELECTRICAL CODE) & ALL OTHER LOCAL REGULATIONS.

NOTE: FOR DUAL VOLTAGE OR MULTIPLE HEAT WIRING SEE WIRING DIAGRAM IDP-129-107 AVAILABLE UPON REQUEST FROM TEMPCO OR ON LINE AT WWW.TEMPCO.COM

NOTE: ELECTRICAL CONNECTIONS TO THE HEATER ARE MADE THROUGH THE 1/2 NPT TAPPED HOLES IN THE TOP OF THE HOUSING OR THROUGH THE K.O.'S AT ENDS. WIRING SHOULD BE RUN IN RIGID OR FLEXIBLE METAL CONDUIT AND INSTALLED IN ACCORDANCE WITH NEC AND ALL LOCAL CODES THAT MAY BE APPLICABLE. ACCESS TERMINALS BY REMOVING THE ENCLOSURE COVER SCREWS.

WARNING: HAZARD OF ELECTRIC SHOCK. INSTALLATION MUST BE GROUNDED TO EARTH TO AVOID SHOCK HAZARD. DISCONNECT POWER TO INSTALLATION BEFORE SERVICING OR INSTALLING HEATER

TITLE: TRH UNIVERSAL 2000 RADIANT HEATER INSTALLATION, WIRING, & PARTS ASSEMBLY NEMA 1 HOUSING - SERIES 1 & 2



TEMPCO Electric Heater Corporation
607 N. Central Ave.
Wood Dale, IL 60191-1452 U.S.A.
Email: info@tempco.com

DRAWN BY: APPROVED: REV. DATE: DRAWING NUMBER:
JWG GDS 3 9/22/10 IDP-129-101