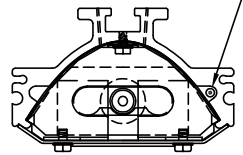


QRH SERIES 1 – SINGLE QUARTZ LAMP

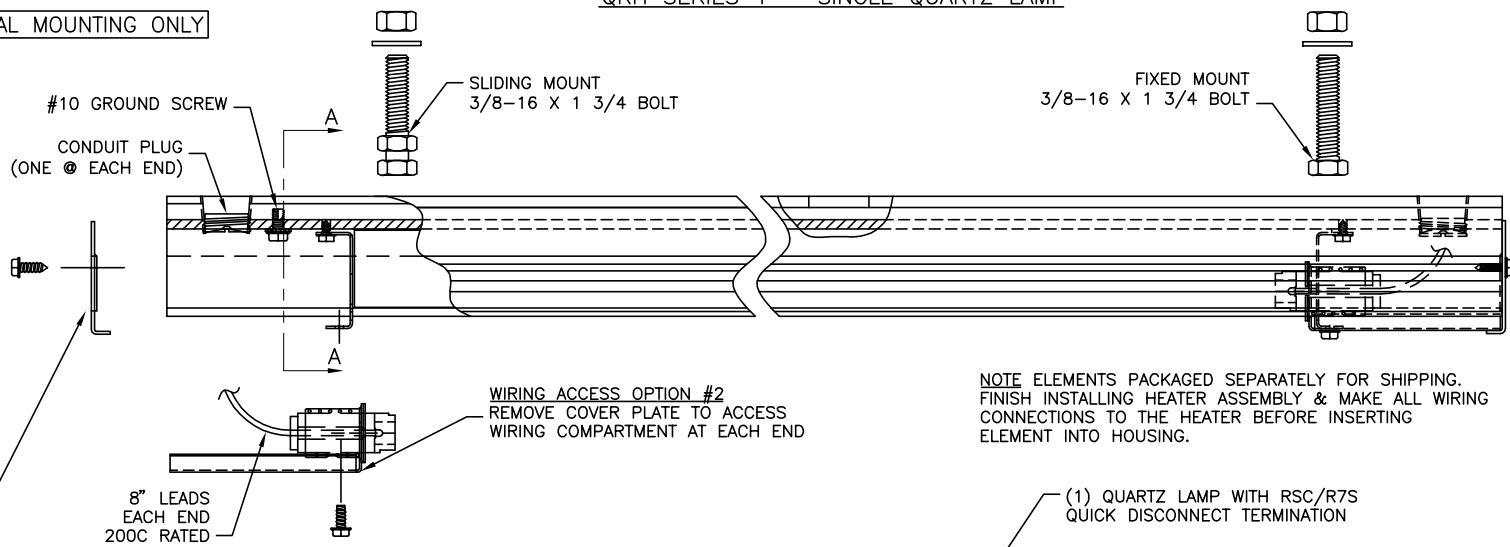
CAUTION: FOR HORIZONTAL MOUNTING ONLY

FOR SINGLE END WIRING:  
INSTALL CROSSOVER WIRE  
16GA 450°C 600V MIN  
BEHIND REFLECTOR



SECTION A-A

WIRING ACCESS OPTION #1  
REMOVE END PLATE TO ACCESS  
WIRING COMPARTMENT AT EACH END

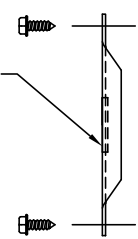


WIRING ACCESS OPTION #2  
REMOVE COVER PLATE TO ACCESS  
WIRING COMPARTMENT AT EACH END

NOTE ELEMENTS PACKAGED SEPARATELY FOR SHIPPING.  
FINISH INSTALLING HEATER ASSEMBLY & MAKE ALL WIRING  
CONNECTIONS TO THE HEATER BEFORE INSERTING  
ELEMENT INTO HOUSING.

(1) QUARTZ LAMP WITH RSC/R7S  
QUICK DISCONNECT TERMINATION

1/2" TRADE SIZE K-O  
(ONE @ EACH END)



"WARNING:"  
DO NOT USE COPPER WIRE TO MAKE  
CONNECTIONS INSIDE THIS HEATER. HIGH  
TEMPERATURES WILL OXIDIZE COPPER.  
USE OF NICKEL PLATED OR NICKEL CLAD  
INSULATED COPPER WIRE IS RECOMMENDED.  
WIRE INSULATION RATING MUST BE SUITABLE  
FOR THE AMBIENT TEMPERATURE OF THE  
WIRING INSTALLATION. AMPACITY & VOLTAGE  
RATINGS SHOULD BE IN ACCORDANCE WITH  
NEC/NFPA (NATIONAL ELECTRICAL CODE)  
& ALL OTHER LOCAL REGULATIONS.

WARNING

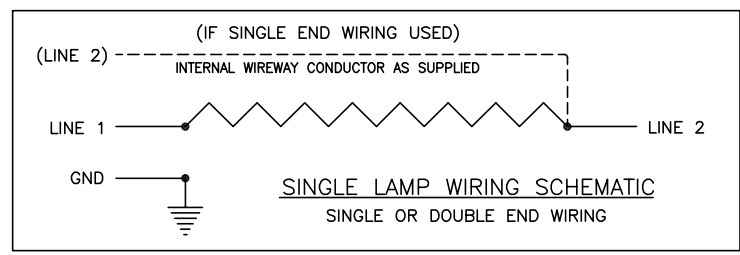
HAZARD OF ELECTRIC SHOCK. INSTALLATION MUST BE GROUNDED TO  
EARTH TO AVOID SHOCK HAZARD. DISCONNECT POWER TO INSTALLATION  
BEFORE SERVICING OR INSTALLING HEATER.

DANGER – FIRE HAZARD

THESE HEATERS ARE NOT FOR USE IN ATMOSPHERES WHERE FLAMMABLE OR COMBUSTIBLE  
VAPORS, DUST, GASES, OR LIQUIDS ARE PRESENT AS DEFINED IN THE NATIONAL ELECTRICAL CODE.  
WHERE SOLVENTS, WATER, ETC. ARE BEING EVAPORATED FROM THE PROCESS, IT IS NECESSARY TO  
PROVIDE SUBSTANTIAL QUANTITIES OF VENTILATING AIR TO CARRY AWAY ALL RESULTING VAPORS.

LAMP INSTALLATION & MAINTENANCE INSTRUCTIONS

- LAY UNIT FACE UP AND USE EITHER METHOD #1 OR #2 TO ACCESS WIRING COMPARTMENT AT EACH END. INSTALL ALL LINE WIRING AND FITTINGS AS REQUIRED FOR INSTALLATION AT THIS TIME. REPLACE COVERS OR END PLATES BEFORE INSTALLING QUARTZ LAMP.
- CAREFULLY REMOVE QUARTZ LAMP FROM SHIPPING CARTON. WEAR LINT-FREE OR LATEX GLOVES WHEN HANDLING LAMP. INSERT ONE END OF LAMP INTO QUICK CONNECT RSC/R7S TERMINAL AND GENTLY PRESS IN ON CERAMIC SOCKET. PRESS IN ON CERAMIC SOCKET AT OTHER END AND INSERT OTHER END OF LAMP INTO THAT TERMINAL. THE CERAMIC SOCKETS AT EITHER END MUST BE ABLE TO MOVE FREELY IN ORDER TO MAINTAIN GOOD MECHANICAL AND ELECTRICAL CONTACT WITH THE END OF THE QUARTZ LAMP. IF NOT, PULL SOCKET OUT MANUALLY UNTIL BOTH ENDS OF LAMP ARE FIRMLY CONNECTED TO CERAMIC SOCKETS. VERIFY LAMP IS FIRMLY CONNECTED BEFORE APPLYING POWER.
- KEEP QUARTZ LAMPS AND ALUMINUM REFLECTORS CLEAN TO MAINTAIN GOOD HEATER LIFE. USE A CLEAN, LINT-FREE CLOTH AND ISOPROPYL ALCOHOL TO REMOVE DIRT, OIL, FINGERPRINTS, OR DUST.
- QUARTZ LAMPS HAVE A HIGH INRUSH CURRENT – TYPICALLY 10 TO 15 TIMES THE STEADY STATE CURRENT FOR NO MORE THAN 0.2 SECONDS. DO NOT USE FAST RESPONSE FUSES.
- CAUTION:  
DO NOT MOUNT HEATER HOUSING CLOSER THAN 6" TO ANY STRUCTURAL OR INSULATING MATERIAL THAT DOES NOT HAVE AT LEAST A 200°C CONTINUOUS TEMPERATURE RATING



TITLE:  
QRH UNIVERSAL 2000  
RADIANT HEATER INSTALLATION,  
WIRING, & PARTS ASSEMBLY  
NEMA 1 HOUSING – SERIES 1

DRAWN BY:	APPROVED:	REV:	DATE:	DRAWING NUMBER:
JWG	GDS	2	3/15/13	IDP-129-106

**TEMPCO**  
www.tempeco.com  
TEMPCO Electric Heater Corporation  
607 N. Central Ave.  
Wood Dale, IL 60191-1452 U.S.A.  
Email: info@tempeco.com