



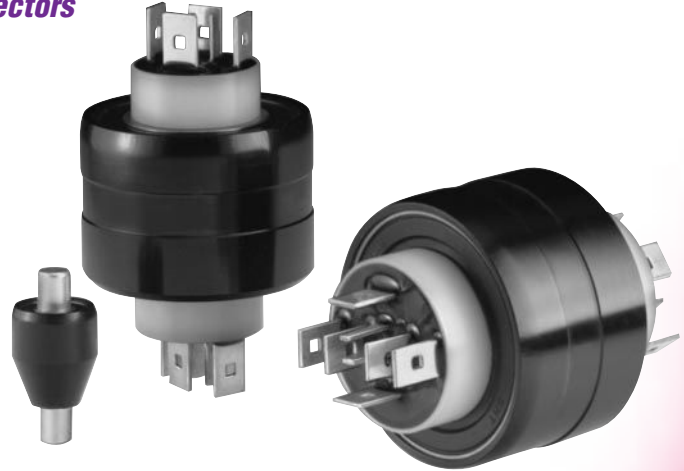
Rotating Multi-Pin Electrical Connectors

Do you want a superior connection or an ordinary slip ring assembly?

Choose TEMPCO's Rotating Electrical Connectors for Higher Operating Efficiencies . . .

Design Features

- * Superior to conventional slip rings
- * Extremely low electrical noise
- * Less than 1 milliohm resistance
- * Sealed, ball bearing construction
- * Increased reliability, no maintenance
- * Durable, compact, low cost



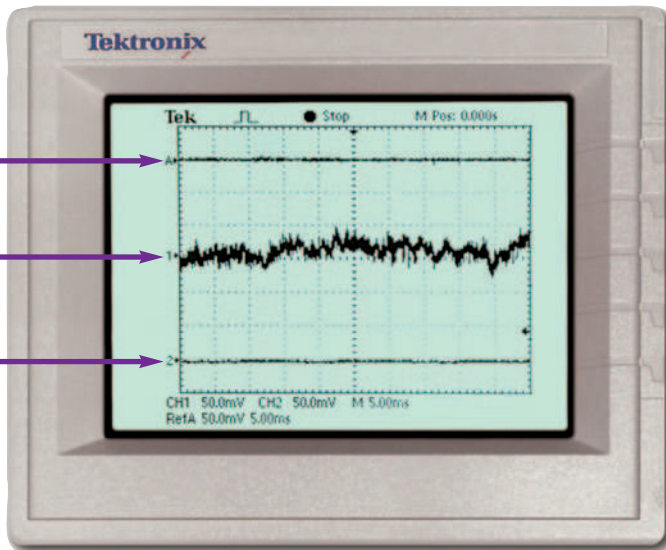
Multi-Pin Rotating Connectors Offer Superior Performance

Slip rings require maintenance and lose signal quality over time due to wear and debris on the brushes and commutator. **Tempco's Rotating Electrical Connectors** are maintenance free. They last much longer than slip ring assemblies, and the signal does not degrade over time.

Slip rings introduce electrical noise into the signal being transmitted, as shown on the oscilloscope below. **Tempco's Rotating Electrical Connectors** transmit with near zero electrical noise, so the same connector style can be used for power and signal transmission, saving money.

Slip rings typically last for a few million revolutions. **Tempco's Rotating Electrical Connectors** typically last hundreds of millions of revolutions. In many applications they can last over a billion revolutions.

The superior performance of **Tempco's Rotating Electrical Connectors** is attributable to the unique design of the connector. The electrical conduction path is a liquid metal that is molecularly bonded to the contacts. This creates a connection that is constant and unchanged for the life of the connector.



Typical Applications

- ↔ Heating Elements
- ↔ Thermocouples
- ↔ Rotating Antennas Equipment
- ↔ Cable Reels
- ↔ Instrumentation
- ↔ Testing and Control Devices
- ↔ Lamps
- ↔ Signs
- ↔ Displays
- ↔ Packaging
- ↔ Robotics
- ↔ Strain Gauges
- ↔ Heated Rollers

Ordering Information

Order by the part number of the rotating connector and accessories that match your requirements.

Standard lead time is stock to 4 weeks.

⚠ WARNING: Cancer and Reproductive Harm - www.P65Warnings.ca.gov.



SINGLE CONDUCTOR

1 Conductor, 10 Amp

Model 110

Part No.	Conductors	Description	VOLTAGE AC/DC	AMP RATING AT 240 VAC	MAX FREQ. MHz	CONTACT RESISTANCE	MAX OP. RPM	TEMPERATURE Max.F(C) / Min.F(C)	ROTATION Torque (gm-cm)	CIRCUIT SEPARATION
MER00110	1	Standard Model	N/A	10	200	<1mΩ	3600	140(60)/-20(-29)	35	N/A
MER00112	1	Stainless Steel Bearing	N/A	10	200	<1mΩ	3600	140(60)/-20(-29)	35	N/A
MER00113	1	Low Torque	N/A	10	200	<1mΩ	1200	140(60)/-20(-29)	10	N/A

ACCESSORIES



MER90002 one-contact receptacle



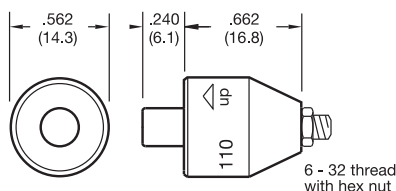
MER90003 one-contact receptacle w/ 6" wire



MER90004 ring terminal (12-10 AWG)

MER90001 one-contact cap w/solder lug

Receptacle used for mounting to rotating device.
Accessories required for wire connections. Order separately.



Inch (mm)



1 Conductor, 10 Amp

Model 110-T

Part No.	Conductors	Description	VOLTAGE AC/DC	AMP RATING AT 240 VAC	MAX FREQ. MHz	CONTACT RESISTANCE	MAX OP. RPM	TEMPERATURE Max.F(C) / Min.F(C)	ROTATION Torque (gm-cm)	CIRCUIT SEPARATION
MER00111	1	Standard Model	N/A	10	200	<1mΩ	3600	140(60)/-20(-29)	35	N/A
MER00115	1	Stainless Steel Bearing	N/A	10	200	<1mΩ	3600	140(60)/-20(-29)	35	N/A
MER00114	1	Low Torque	N/A	10	200	<1mΩ	1200	140(60)/-20(-29)	10	N/A

ACCESSORIES



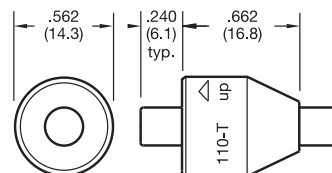
MER90002 one-contact receptacle



MER90003 one-contact receptacle w/ 6" wire

MER90001 one-contact cap w/ solder lug

Receptacle used for mounting to rotating device.
Accessories required for wire connections. Order separately.



Inch (mm)



1 Conductor, 250 Amp

Model 1250

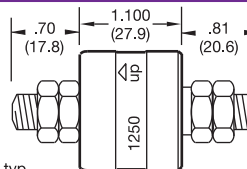
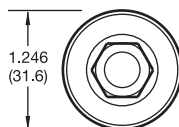
Part No.	Conductors	Description	VOLTAGE AC/DC	AMP RATING AT 240 VAC	MAX FREQ. MHz	CONTACT RESISTANCE	MAX OP. RPM	TEMPERATURE Max.F(C) / Min.F(C)	ROTATION Torque (gm-cm)	CIRCUIT SEPARATION
MER01250	1	Standard Model	N/A	250	200	<1mΩ	1200	140(60)/-20(-29)	250	N/A
MER01251	1	Stainless Steel Bearing	N/A	250	200	<1mΩ	1200	140(60)/-20(-29)	250	N/A
MER01252	1	Metric Thread (10x1.5)	N/A	250	200	<1mΩ	1200	140(60)/-20(-29)	250	N/A
MER01253	1	Metric Thread & Stainless Steel Bearing	N/A	250	200	<1mΩ	1200	140(60)/-20(-29)	250	N/A
MER01254	1	Stainless Steel Body & Bearing	N/A	250	200	<1mΩ	1200	140(60)/-20(-29)	250	N/A
MER01255	1	Metric Thd., Stainless Steel Body & Bearing	N/A	250	200	<1mΩ	1200	140(60)/-20(-29)	250	N/A

ACCESSORIES



MER90106 Boot Kit
For dust and splash protection
IP51

Inch (mm)



3/8-16 thd. typ.
(10x1.5) Metric MER01252 and MER001253





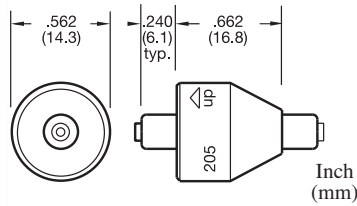
Rotating Electrical Connectors

2 & 3 CONDUCTORS

2 Conductors, 4 Amp

Model 205

Part No.	Conductors	Description	VOLTAGE AC/DC	AMP RATING AT 240 VAC	MAX FREQ. MHz	CONTACT RESISTANCE	MAX OP. RPM	TEMPERATURE Max.F(C) / Min.F(C)	ROTATION Torque (gm-cm)	CIRCUIT SEPARATION
MER00205	2	Standard Model	0-250	4	200	<1mΩ	2000	140(60)/45(7)	75	>25MΩ
MER00208	2	Stainless Steel Bearing	0-250	4	200	<1mΩ	2000	140(60)/45(7)	75	>25MΩ
MER00207	2	Low Torque/Low Temp.	0-250	4	200	<1mΩ	1200	140(60)/-20(-29)	20	>25MΩ
MER00210	2	Low Temp. Stainless Steel Bearing	0-250	4	200	<1mΩ	1200	140(60)/-20(-29)	75	>25MΩ
MER00206	2	High RPM	0-250	4	200	<1mΩ	3600	140(60)/45(7)	35	>25MΩ
MER00209	2	High RPM Stainless Steel Bearing	0-250	4	200	<1mΩ	3600	140(60)/45(7)	35	>25MΩ



ACCESSORIES

MER90015 two-contact receptacle w/ one 6" wire

MER90005 two-contact receptacle w/ two 6" wires

MER90006 two-contact receptacle w/ two solder holes

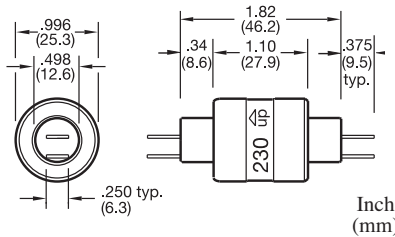
MER90007 two-contact cap w/ solder lugs

Receptacle used for mounting to rotating device.
Accessories required for wire connections. Order separately.

2 Conductors, 30 Amp

Model 230

Part No.	Conductors	Description	VOLTAGE AC/DC	AMP RATING AT 240 VAC	MAX FREQ. MHz	CONTACT RESISTANCE	MAX OP. RPM	TEMPERATURE Max.F(C) / Min.F(C)	ROTATION Torque (gm-cm)	CIRCUIT SEPARATION
MER00230	2	Standard Model	0-250	30	200	<1mΩ	1800	140(60)/-20(-29)	200	>25MΩ
MER00231	2	Stainless Steel Bearing	0-250	30	200	<1mΩ	1800	140(60)/-20(-29)	200	>25MΩ



Includes (2) MER90009 and (2) MER90010

ACCESSORIES

MER90010 Terminal 16-14 AWG

MER90101 Boot Kit For dust and splash protection IP51

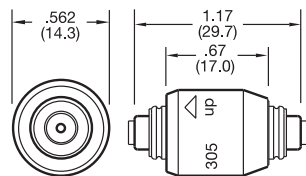
MER90009 Terminal 16-14 AWG

Terminals for other wire gauges available.

3 Conductors, 4 Amp

Model 305

Part No.	Conductors	Description	VOLTAGE AC/DC	AMP RATING AT 240 VAC	MAX FREQ. MHz	CONTACT RESISTANCE	MAX OP. RPM	TEMPERATURE Max.F(C) / Min.F(C)	ROTATION Torque (gm-cm)	CIRCUIT SEPARATION
MER00305	3	Stainless Steel Bearing Standard	0-250	4	200	<1mΩ	1800	140(60)/45(7)	100	>25MΩ
MER00316	3	Low Temperature	0-250	4	200	<1mΩ	1000	140(60)/-20(-29)	100	>25MΩ



ACCESSORIES

MER90014 three-contact receptacle w/ three 6" wires

MER90013 three-contact cap w/ solder lugs

Receptacle used for mounting to rotating device.
Accessories required for wire connections. Order separately.



3 & 4 CONDUCTORS

3 Conductors, Combination 4 Amp & 30 Amp

Model 331

Part No.	Conductors	Description	VOLTAGE AC/DC	AMP RATING AT 240 VAC	MAX FREQ. MHz	CONTACT RESISTANCE	MAX OP. RPM	TEMPERATURE Max.F(C) / Min.F(C)	ROTATION Torque (gm-cm)	CIRCUIT SEPARATION
MER00331	3	Standard Model	0-250	2@4/1@30	100	<1mΩ	1800	140(60)/-20(-29)	200	>25MΩ
MER00333	3	Stainless Steel Bearing	0-250	2@4/1@30	100	<1mΩ	1800	140(60)/-20(-29)	200	>25MΩ

ACCESSORIES



MER90010
Terminal
16-14 AWG



MER90101
Boot Kit
For dust and splash protection
IP51

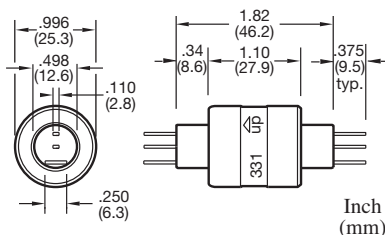


MER90009 Terminal
16-14 AWG



MER90008 Terminal
22-18 AWG

Terminals for other wire gauges available.



Includes (1) MER90010,
(1) MER90009 and (4) MER90008



3 Conductors, 30 Amp

Model 330

Part No.	Conductors	Description	VOLTAGE AC/DC	AMP RATING AT 240 VAC	MAX FREQ. MHz	CONTACT RESISTANCE	MAX OP. RPM	TEMPERATURE Max.F(C) / Min.F(C)	ROTATION Torque (gm-cm)	CIRCUIT SEPARATION
MER00330	3	Standard Model	0-250	30	100	<1mΩ	1200	140(60)/-20(-29)	300	>25MΩ
MER00332	3	Stainless Steel Bearing	0-250	30	100	<1mΩ	1200	140(60)/-20(-29)	300	>25MΩ

ACCESSORIES



MER90010
Terminal
16-14 AWG



MER90102
Boot Kit
For dust and splash protection
IP51

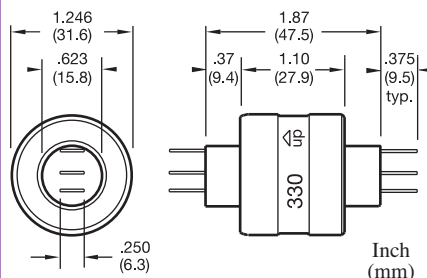


MER90021
Shrink Tube



MER90019
Terminal 16-14 AWG

Terminals for other wire gauges available.



Includes (3) MER90010,
(3) MER90019 and (3) MER90021



4 Conductors, Combination 4 Amp & 30 Amp

Model 430

Part No.	Conductors	Description	VOLTAGE AC/DC	AMP RATING AT 240 VAC	MAX FREQ. MHz	CONTACT RESISTANCE	MAX OP. RPM	TEMPERATURE Max.F(C) / Min.F(C)	ROTATION Torque (gm-cm)	CIRCUIT SEPARATION
MER00430	4	Standard Model	0-250	2@4/2@30	100	<1mΩ	1200	140(60)/-20(-29)	400	>25MΩ
MER00431	4	Stainless Steel Bearing	0-250	2@4/2@30	100	<1mΩ	1200	140(60)/-20(-29)	400	>25MΩ

ACCESSORIES



MER90022 Plug Assembly
12-in. wires, 14 AWG & 18 AWG
SUITABLE FOR UP TO 20 AMPS



MER90102
Boot Kit
For dust and splash protection
IP51



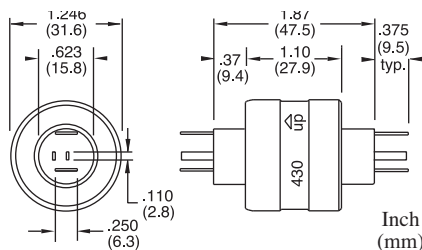
MER90010
16-14 AWG



MER90009, 16-14 AWG



MER90008, 22-18 AWG



Includes (2) MER90009,
(2) MER90010 and (4) MER90008





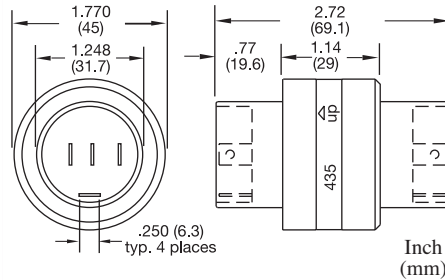
Rotating Electrical Connectors

4, 6 & 8 CONDUCTORS

4 Conductors, 30 Amp, High Voltage

Model 435

Part No.	Conductors	Description	VOLTAGE AC/DC	AMP RATING AT 500 VAC	MAX FREQ. MHz	CONTACT RESISTANCE	MAX OP. RPM	TEMPERATURE Max.F(C) / Min.F(C)	ROTATION Torque (gm-cm)	CIRCUIT SEPARATION
MER00435	4	High Voltage Model	0-500	30	100	<1mΩ	300	140(60)/-20(-29)	850	>50MΩ
MER00436	4	High Voltage Stainless Steel Bearing	0-500	30	100	<1mΩ	300	140(60)/-20(-29)	850	>50MΩ



Includes (4) MER90009 and (4) MER90010

ACCESSORIES



MER90009
Terminal 16-14 AWG



MER90010
Terminal 16-14 AWG



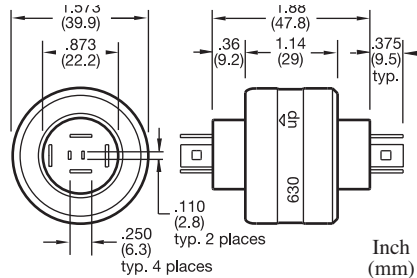
MER90103
Boot Kit
For dust and splash protection IP51

Terminals for other wire gauges available.

6 Conductors, Combination 4 Amp & 30 Amp

Model 630

Part No.	Conductors	Description	VOLTAGE AC/DC	AMP RATING AT 240 VAC	MAX FREQ. MHz	CONTACT RESISTANCE	MAX OP. RPM	TEMPERATURE Max.F(C) / Min.F(C)	ROTATION Torque (gm-cm)	CIRCUIT SEPARATION
MER00630	6	Standard Model	0-250	2@4/4@30	100	<1mΩ	300	140(60)/-20(-29)	700	>25MΩ
MER00631	6	Stainless Steel Bearing	0-250	2@4/4@30	100	<1mΩ	300	140(60)/-20(-29)	700	>25MΩ



Includes (4) MER90008, (4) MER90010, (4) MER90019 and (4) MER90021

ACCESSORIES



MER90008
Terminal 22-18 AWG



MER90021
Shrink Tube



MER90019
Terminal 16-14 AWG



MER90010
Terminal 16-14 AWG



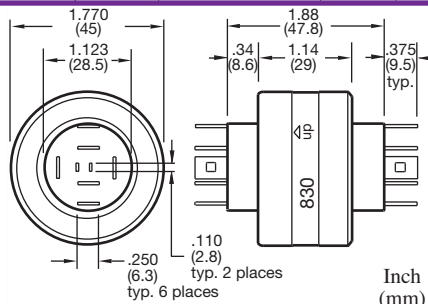
MER90104
Boot Kit
For dust and splash protection IP51

Terminals for other wire gauges available.

8 Conductors, Combination 4 Amp & 30 Amp

Model 830

Part No.	Conductors	Description	VOLTAGE AC/DC	AMP RATING AT 240 VAC	MAX FREQ. MHz	CONTACT RESISTANCE	MAX OP. RPM	TEMPERATURE Max.F(C) / Min.F(C)	ROTATION Torque (gm-cm)	CIRCUIT SEPARATION
MER00830	8	Standard Model	0-250	2@4/6@30	100	<1mΩ	200	140(60)/-20(-29)	1000	>25MΩ
MER00831	8	Stainless Steel Bearing	0-250	2@4/6@30	100	<1mΩ	200	140(60)/-20(-29)	1000	>25MΩ



Includes (4) MER90008, (6) MER90010, (6) MER90019 and (6) MER90021

ACCESSORIES



MER90008
Terminal 22-18 AWG



MER90021
Shrink Tube



MER90019
Terminal 16-14 AWG



MER90010
Terminal 16-14 AWG



MER90105
Boot Kit
For dust and splash protection IP51

Terminals for other wire gauges available.



TECHNICAL INFORMATION

MOUNTING

- Rotating connectors may be used in any position between vertical and 90° horizontal. The UP arrow should not point below horizontal.
- Model 110, 110-T, 205 and 305 connectors use the knurled receptacle inserted into the rotating member for mounting. This receptacle holds the rotating connector.
- Larger rotating connectors use either the body or the plastic collar for mounting to the rotating member.
- In horizontal applications, mount the connector with the body rotating to reduce mechanical loads on the bearing.
- Limit mounting eccentricity to a maximum of .005" TIR.
- Rotating connectors are not designed to carry mechanical loads. One end should be allowed to float, attached only by the connecting wires.

CONNECTION

- Use stranded wires of ample length and flexibility for the connection in order to avoid mechanical loads.
- Terminal accessories are push-on quick disconnects which crimp onto the connecting wires and push onto the connector tabs.
- Do not solder wires to the connector or bend tabs, as such misuse will cause connector failure and void the warranty.
- Provide overload protection to the electrical circuit containing the rotating electrical connector.
- If wire wrapping occurs from too much connector torque, it is suggested to use a torque arm positioned to float against a fixed stop.

TEMPERATURE

- Provide thermal insulation where necessary to prevent the connector temperature from exceeding 140°F (60°C). Rotating electrical connectors contain plastic materials that are sensitive to heat.
- Overheating will cause connector failure and voids the warranty.

VIBRATION/SHOCK

- Vibration or mechanical shock will reduce connector life or cause failure.
- If vibration or shock is present, we suggest a flexible isolating mounting.

FOOD APPLICATIONS

- Rotating electrical connectors are factory sealed but do contain mercury and other fluids.
- As a precaution, a protective housing is suggested to isolate the rotating connector from the food product.

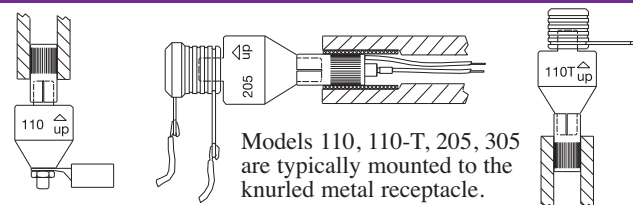
BOOT KIT

- The boot kit is not watertight or intended for waterproofing but is designed to give protection to the wire terminals from splashing water or dust. The protection rating is IP51.

RECYCLING

Rotating electrical connectors contain mercury and should not be disposed of in the trash but only through mercury recycling programs. Tempco offers a mercury recycling service for this purpose. Ship spent connectors to our facility by UPS ground enclosed in a plastic bag. Include paperwork stating "for recycling" with your company name, phone and fax numbers. Do not send through the U.S. Mail.

Suggested Mounting Methods



Models 110, 110-T, 205, 305 are typically mounted to the knurled metal receptacle.

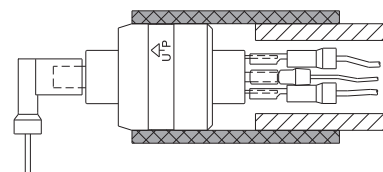
Receptacle Mount Hole Dimensions

MODEL	HOLE DIAMETER Ø	DEPTH
591, 592, 5920, 594	.283" (7.19)	.35" (8.89)
593	.408 (10.36)	.35" (8.89)

Inch (mm) Tolerances Ø $+0.001" \begin{matrix} +.025 \\ -.000 \end{matrix} \begin{matrix} (-.000) \end{matrix}$

Typical Body Mount

Body Mount Hole Dimensions



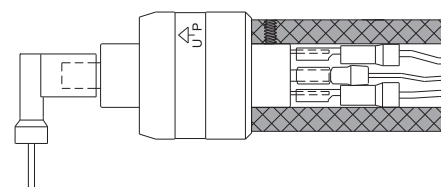
MODEL	HOLE DIAMETER Ø	DEPTH*
230, 331	.998" (25.35)	.80" (20)
330, 430, 1250	1.248" (31.70)	.80" (20)
630	1.575" (40.00)	.80" (20)
435, 830	1.772" (45.00)	.80" (20)

Inch (mm) Tolerances Ø $+0.001" \begin{matrix} +.025 \\ -.000 \end{matrix} \begin{matrix} (-.000) \end{matrix}$

*Minimum additional depth for disconnect clearance is 1.4" (35.5).

Typical Collar Mount

Collar Mount Hole Dimensions



MODEL	HOLE DIAMETER Ø	DEPTH*
230, 331	.500" (12.70)	.40" (10)
330, 430	.625" (15.88)	.40" (10)
430 w/ plug	.625" (15.88)	1.40" (36)
630	.875" (22.23)	.40" (10)
830	1.125" (28.58)	.40" (10)
435	1.250" (31.75)	.80" (20)
1250 Stud	3/8"-16 UNC	.81" (20.5)
1250-metric Stud	10 x 1.5 metric	.81" (20.5)

Inch (mm) Tolerances Ø $+0.001" \begin{matrix} +.025 \\ -.000 \end{matrix} \begin{matrix} (-.000) \end{matrix}$

*Minimum additional depth for disconnect clearance is 1.4" (35.5).

Insulating Collar Mount

Mounting with an insulating collar may be required to insulate connector from conducted heat. Soft-mounting with rubber type material is needed if unit will be subjected to vibration.

