

### Mi-Plus® Type C — General Purpose Terminal Box

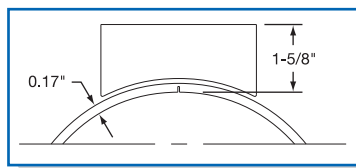
General purpose terminal boxes are a simple & economical way to protect employees from electric shock or prevent electric shorts that can result from exposed wiring on band heater electrical installations.

The Heavy Duty Stainless Steel Terminal Box has a 1/2" trade size knockout (actual diameter 7/8") that will accept standard armor cable connectors. To simplify installation, Mi-Plus band heaters with terminal boxes can be pre-wired.

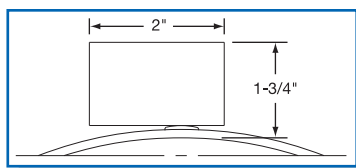
- Type CA** – Box only (shown)
- Type CD** – Box with prewired SS wire braid
- Type CC** – Box with prewired SS armor cable
- Type CE** – Box with prewired plain leads

The standard abrasive protection leads are 10" of protection over 12" of flexible leads. The standard lead length for plain leads is 10" long.

*If longer leads are required, specify when ordering.*



Box: One-Piece Expandable Construction



Box: One-Piece & Two-Piece Construction



#### One-Piece Band

**Standard Termination Location:** opposite the gap; center of width

- \* **Minimum Inside Diameter:** 3" (76.2 mm)
- \* **Minimum Width:** 2" (50.8 mm)
- \* **Maximum Volts/Amps:** 480VAC/25A

#### Two-Piece Band

**Standard Termination Location:** center of each half; center of width

- \* **Minimum ID:** 3" (76.2 mm)
- \* **Minimum Width:** 2" (50.8 mm)
- \* **Maximum Volts/Amps:** 480VAC/25A each half



#### One-Piece Expandable Band

**Standard Termination Location:** opposite the gap; center of width

- \* **Minimum ID:** 3" (76.2 mm)
- \* **Minimum Width:** 2" (50.8 mm)
- \* **Maximum Volts/Amps:** 480VAC/25A each half

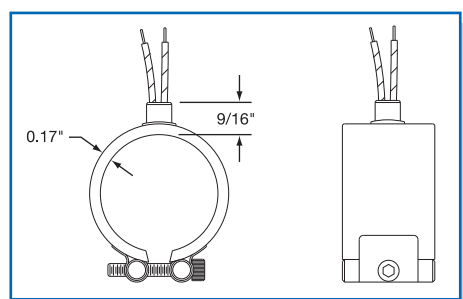


## Selection TERMINATION Guide

### Mi-Plus Type L1 — Plain Wire Leads

Plain wire leads are available on all construction styles. The lead wires exit straight out through a stainless steel eyelet. High-temperature 842°F (450°C) mica insulated lead wire is standard.

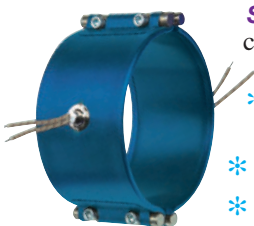
The standard lead length is 10" long. *If longer leads are required, specify when ordering.*



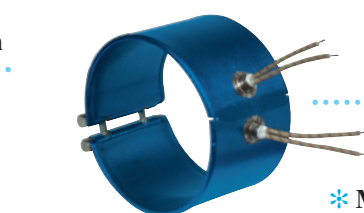
#### Two-Piece Band

**Standard Termination Location:** center of each half; center of width

- \* **Minimum Inside Diameter:** 3" (76.2 mm)
- \* **Minimum Width:** 1" (25.4 mm)
- \* **Maximum Volts/Amps:** 480VAC/12.5A each half



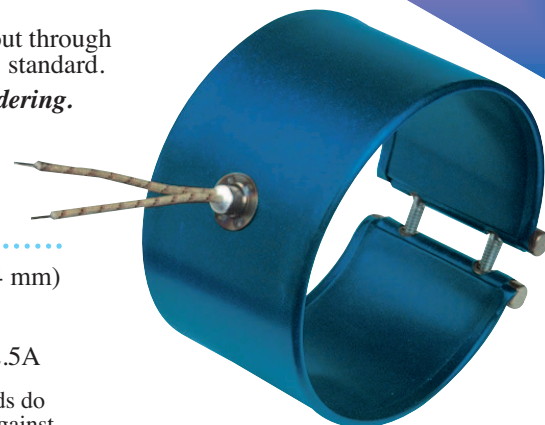
**Note:** Plain wire leads do not offer protection against contamination or abrasion.



#### One-Piece Band

**Standard Termination Location:** opposite the gap; center of width

- \* **Minimum Inside Diameter:** 1" (25.4 mm)
- \* **Minimum Width:** 1" (25.4 mm)
- \* **Maximum Volts/Amps:** 480VAC/12.5A



#### One-Piece Expandable Band

**Standard Termination Location:** two sets of leads opposite the gap; center of width

- \* **Minimum Inside Diameter:** 2-1/2" (63.5 mm)
- \* **Minimum Width:** 1-1/2" (38.1 mm)
- \* **Maximum Volts/Amps:** 480VAC/12.5A each half