

Mi-Plus® Type P2 — Terminal Box and Quick Disconnect Straight Plug

This lower profile terminal box and high temperature quick disconnect plug assembly offers a solution where clearance is a problem. The combination of plug and cup assembly along with stainless steel armor cable or stainless steel wire braid eliminates all live exposed terminals or wiring that can be a potential hazard.

The assembly is available with straight plug only. To simplify installation, Mi-Plus band heaters with Quick Disconnects can be pre-wired with stainless steel armor or stainless steel wire braid.

P2A — Box and Cup only

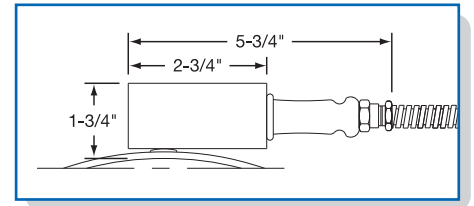
P2B — Box and Cup with straight plug

P2D — Box and Cup with straight plug and stainless steel armor cable

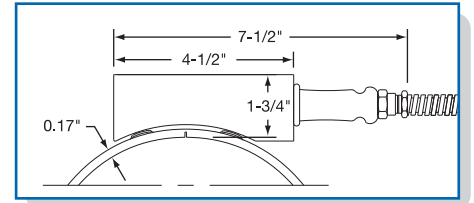
P2E — Box and Cup with straight plug and stainless steel wire braid

The standard abrasive protection leads are 10" of protection over 12" of flexible leads.

If longer leads, armor cable or braid are required, specify when ordering.



Box - One- & Two-Piece Construction



Box - One-Piece Expandable Construction

One-Piece Band

Standard Termination Location:
opposite the gap; center of width

* **Minimum Inside Diameter:**
3" (76.2 mm)

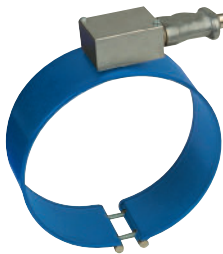
* **Minimum Width:** 2" (50.8 mm)

* **Maximum Volts:** 250VAC

* **Maximum Amps:** 16

* **Maximum Temperature:**
392°F (200°C)

Type P2D Shown



Type P2A Shown



Selection
TERMINATION
Guide

Two-Piece Band

Standard Termination Location:
center of each half; center of width

* **Minimum Inside Diameter:** 3" (76.2 mm)

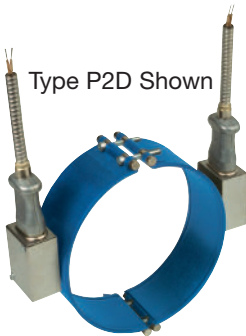
* **Minimum Width:** 2" (50.8 mm)

* **Maximum Volts:** 250VAC each half

* **Maximum Amps:** 16 each half

* **Maximum Temperature:** 392°F (200°C)

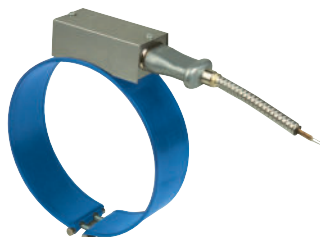
Type P2D Shown



Type P2A Shown



Type P2D Shown



One-Piece Band Expandable

Standard Termination Location:
opposite the gap; center of width

* **Minimum Inside Diameter:** 3" (76.2 mm)

* **Minimum Width:** 2" (50.8 mm)

* **Maximum Volts:** 250VAC each half

* **Maximum Amps:** 16 each half

* **Maximum Temperature:** 392°F (200°C)

Type P2A Shown

