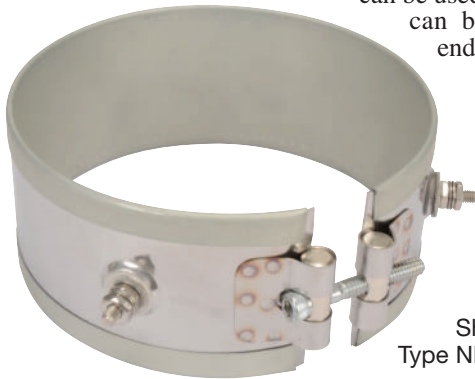


Duraband® Construction Styles

3 CONSTRUCTION TYPES

One-Piece Band

The one-piece construction is available on any screw or lead termination and clamping variation. It can be used where band heaters can be slipped over the end of the cylinder.



Shown with Type NB Built-In Strap

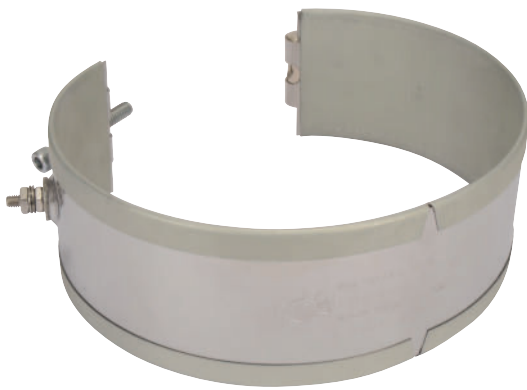
Two-Piece Band

The Two-Piece construction is available on any screw or lead and clamping variation. The Duraband two-piece design provides a **built-in hinge**, making handling and installation easier. It is used on large cylinders or where the heater cannot be slipped over the end of the cylinder. Two-piece band heaters are rated at watts and volts per each half when ordering.

NOTE: Multiple segment designs are recommended on larger diameter (typically larger than 15") heaters to improve the clamping force and



Shown with Type NS Built-In Strap



Shown with Type NE Built-In Strap

One-Piece Expandable Band

The one-piece expandable construction is available on any screw or lead and clamping variation. It can be used where a one-piece band heater would have to be expanded to fit over the barrel during installation, rather than slipped over the end of the barrel.



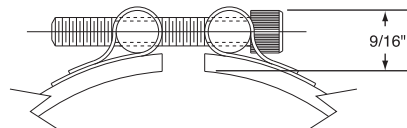
Note: The One-Piece Expandable Band should not be opened and closed more than twice.

Duraband® Construction/Clamping Variations

Standard Built-In Strap Clamping (Low Thermal Expansion)

The Built-In Strap is available with any screw or lead termination and construction variation. The Built-In Strap eliminates the use of awkward-to-handle separate straps, providing more drawing power than any other type of clamping system. The Duraband with Built-In Strap is standard on many designs.

Consult Tempco for multiple segment heaters.



Type NB Shown

Type NB—One-Piece Band
Min. ID: 2" (50.8 mm)
Min. Width: 1-1/4" (31.8 mm)

Type NS—Two-Piece Band
Min. ID: 3" (76.2 mm)
Min. Width: 1-1/4" (31.8 mm)

Type NE—One-Piece Expandable Band
Min. ID: 2-1/2" (63.5 mm)
Min. Width: 1-1/4" (31.8 mm)