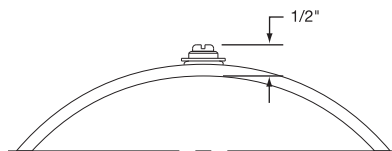


Duraband® Type B3 – Button Terminals



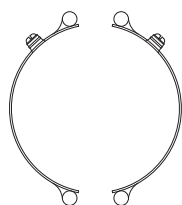
One-Piece Band

Standard Termination Location:
next to gap; across center of width

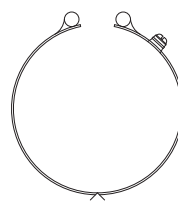
- * **Minimum Inside Diameter:** 2" (50.8 mm)
- * **Minimum Width:** 2-3/8" (60.3 mm)
- * **Screw Size:**
10-32 standard except 6-32 on IDs < 5"
- * **Maximum Volts:** 480VAC
- * **Maximum Amps:** 25A (10-32) or 20A (6-32)

Two-Piece Band

Standard Termination Location:
next to same gap on each half;
across center of width



- * **Minimum Inside Diameter:**
2" (50.8 mm)
- * **Minimum Width:** 2-3/8" (60.3 mm)
- * **Screw Size:** 10-32 standard except
6-32 on IDs < 5"
- * **Maximum Volts/Amps:** 480VAC/
25A (10-32) or 20A (6-32) each half



One-Piece Expandable Band

Standard Termination Location:
next to gap; across center of width

- * **Minimum Inside Diameter:**
2-1/2" (63.5 mm)
- * **Minimum Width:** 2-3/8" (60.3 mm)
- * **Screw Size:** 10-32 standard except
6-32 on IDs < 5"
- * **Maximum Volts/Amps:** 480VAC/
25A (10-32) or 20A (6-32)

Plain Lead Wire Terminations: Type L1, Type L2 & Type L4

Available on any clamping or construction variation.

Duraband Type L1 – Straight Lead Wires



The lead wires exit through a brass eyelet. The standard flexible leads are 10" long with 3" of fiberglass sleeving.

If longer leads are required, specify when ordering.



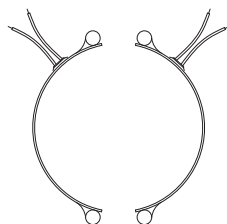
One-Piece Band

Standard Termination Location:
next to gap; center of width

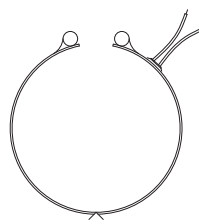
- * **Minimum Inside Diameter:** 2" (50.8 mm)
- * **Minimum Width:** 1" (25.4 mm)
- * **Maximum Volts:** 480VAC
- * **Maximum Amps:** 12.5A

Two-Piece Band

Standard Termination Location:
next to same gap on each half;
center of width



- * **Minimum Inside Diameter:**
2" (50.8 mm)
- * **Minimum Width:** 1" (25.4 mm)
- * **Maximum Volts:** 480V each half
- * **Maximum Amps:** 12.5A each half



One-Piece Expandable Band

Standard Termination Location:
next to gap; center of width

- * **Minimum Inside Diameter:**
2-1/2" (63.5 mm)
- * **Minimum Width:** 1-1/4" (31.8 mm)
- * **Maximum Volts:** 480V
- * **Maximum Amps:** 12.5A

CONTINUED 