

Terminations

Duraband® Type L2 – Lead Wires

Continued from previous page...

L2 is the preferred termination on all small diameter and small width band heaters. The standard flexible leads are 10" long with 3" of fiberglass sleeving.

If longer leads are required, specify when ordering.



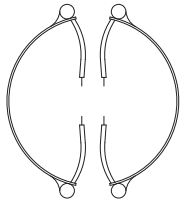
One-Piece Band

Standard Termination Location:
each side of gap; edge of width

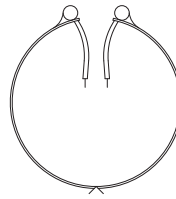
- * **Minimum Inside Diameter:** 7/8" (22.2 mm)
- * **Minimum Width:** 3/4" (19.1 mm)
- * **Maximum Volts:** 480VAC
- * **Maximum Amps:** 12.5A

Two-Piece Band

Standard Termination Location:
each side of each gap;
edge of width



- * **Minimum Inside Diameter:**
2" (50.8 mm)
- * **Minimum Width:** 3/4" (19.1 mm)
- * **Maximum Volts:** 480V each half
- * **Maximum Amps:** 12.5A each half



One-Piece Expandable Band

Standard Termination Location:
each side of gap;
edge of width

- * **Minimum Inside Diameter:**
2-1/2" (63.5 mm)
- * **Minimum Width:** 1-1/4" (31.8 mm)
- * **Maximum Volts:** 480V
- * **Maximum Amps:** 12.5A

Duraband Type L4 – Lead Wires

L4 is a suitable lead termination for small band heaters. The standard flexible leads are 10" long with 3" of fiberglass sleeving.

If longer leads are required, specify when ordering.



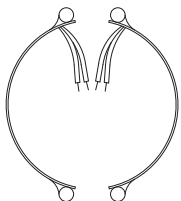
One-Piece Band

Standard Termination Location:
same side of gap; edge of width

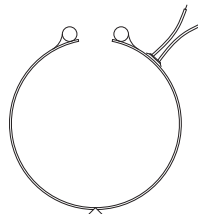
- * **Minimum Inside Diameter:** 7/8" (22.2 mm)
- * **Minimum Width:** 1" (25.4 mm)
- * **Maximum Volts:** 480VAC
- * **Maximum Amps:** 12.5A

Two-Piece Band

Standard Termination Location:
each side of same gap;
center of width



- * **Minimum Inside Diameter:**
2" (50.8 mm)
- * **Minimum Width:** 1" (25.4 mm)
- * **Maximum Volts:** 480V each half
- * **Maximum Amps:** 12.5A each half



One-Piece Expandable Band

Standard Termination Location:
same side of gap; edge of width

- * **Minimum Inside Diameter:**
2-1/2" (63.5 mm)
- * **Minimum Width:** 1-1/4" (31.8 mm)
- * **Maximum Volts:** 480VAC
- * **Maximum Amps:** 12.5A