

## Terminations

### Armor Cable Terminations: Type R1, Type R2 & Type R3

Available on any clamping or construction variation. Armor cable provides far superior protection to lead wires where abrasion is a constant problem. The standard leads are 10" of armor cable over 12" of flexible leads.

*If longer leads are required, specify when ordering.*

### Duraband® Type R1 – Straight Armor Cable

**Type R1A** – Galvanized armor cable crimped in place for heaters under 2-1/2" I.D. and/or under 1-1/4" width.

**Type R1AT** – Galvanized armor cable attached with a threaded fitting for heaters over/equal 2-1/2" I.D. and over/equal 1-1/4" width.

**Type R1B** – Stainless Steel armor cable crimped in place for heaters under 2-1/2" I.D. and/or under 1-1/4" width.

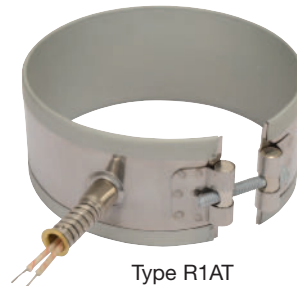
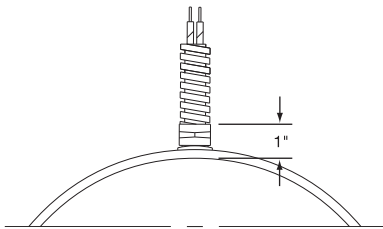
**Type R1BT** – Stainless Steel armor cable attached with a threaded fitting for heaters over/equal 2-1/2" I.D. and over/equal 1-1/4" width.

**Type R1C** – Galvanized armor cable, tack welded

**Type R1D** – SS armor cable, tack welded

**Type R1E** – Galvanized armor cable, full silver brazing

**Type R1F** – SS armor cable, full silver brazing



#### One-Piece Band

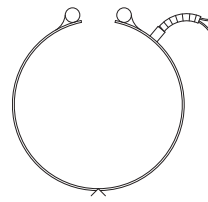
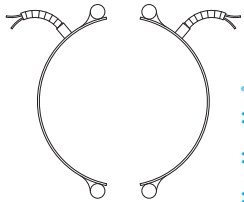
**Standard Termination Location:**  
next to gap; center of width

- \* **Minimum Inside Diameter:** 1-1/2" (38.1 mm)
- \* **Minimum Width:** 1" (25.4 mm)
- \* **Maximum Volts:** 480VAC
- \* **Maximum Amps:** 12.5A

#### Two-Piece Band

**Standard Termination Location:**  
next to same gap on each half;  
center of width

- \* **Minimum Inside Diameter:** 2" (50.8 mm)
- \* **Minimum Width:** 1" (25.4 mm)
- \* **Maximum Volts/Amps:** 480VAC/12.5A each half



#### One-Piece Expandable Band

**Standard Termination Location:**  
next to gap; center of width

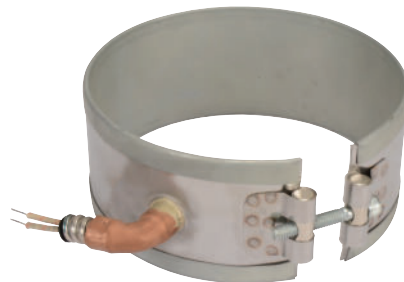
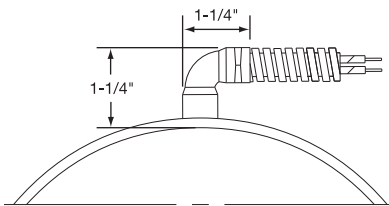
- \* **Minimum Inside Diameter:** 2-1/2" (65.3 mm)
- \* **Minimum Width:** 1-1/4" (31.8 mm)
- \* **Maximum Volts/Amps:** 480VAC/12.5A

### Duraband Type R2 – Right-Angle Armor Cable

**Type R2A** – Galvanized armor cable, crimped

**Type R2B** – SS armor cable, crimped

**Type R2C** – Plain leads, no cable



#### One-Piece Band

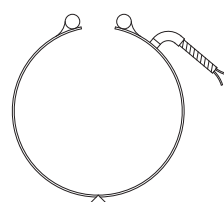
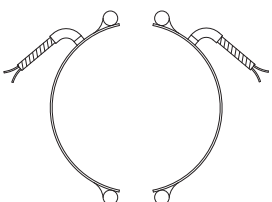
**Standard Termination Location:**  
next to gap; center of width

- \* **Minimum Inside Diameter:** 1-1/2" (38.1 mm)
- \* **Minimum Width:** 1-1/4" (31.8 mm)
- \* **Maximum Volts:** 480VAC
- \* **Maximum Amps:** 12.5A

#### Two-Piece Band

**Standard Termination Location:**  
next to same gap on each half;  
center of width

- \* **Minimum Inside Diameter:** 2" (50.8 mm)
- \* **Minimum Width:** 1-1/4" (31.8 mm)
- \* **Maximum Volts/Amps:** 480VAC/12.5A each half



#### One-Piece Expandable Band

**Standard Termination Location:**  
next to gap; center of width

- \* **Minimum Inside Diameter:** 2-1/2" (63.5 mm)
- \* **Minimum Width:** 1-1/4" (31.8 mm)
- \* **Maximum Volts/Amps:** 480VAC/12.5A