

### How To Specify A Ceramic Band Heater

Ceramic band heaters offer several variations in construction, clamping and electrical terminations. For ease of ordering, make a selection from options listed in each of the boxes below.

#### Construction

(See below)  
One-piece  
Two-piece  
Multiple Sections  
(Specify number of sections required.)  
**Type T** – Reverse Heater Band

#### Insulation

(See page 1-67)  
Standard 1/4" insulation (**S**)  
Double 1/2" insulation (**D**)  
Uninsulated (**R**) (1-75)

#### Clamping

(See page 1-67)  
**Type B** – Built-in bracket (Standard)  
**Type S** – Built-in bracket with spring loaded screw  
**Type L** – Latch and trunnion  
**Type F** – Bent-up flange (Ears)

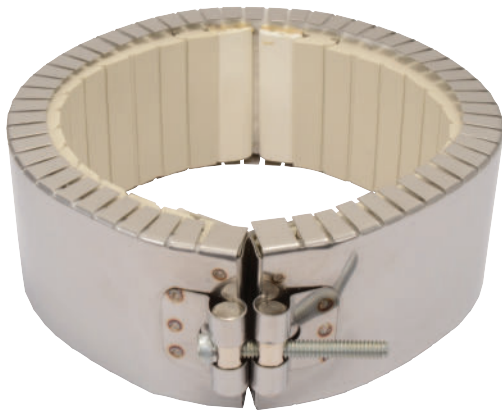
#### Shell Overlap

(See page 1-67)  
Provides T/C hole.  
(Specify if required.)

#### Termination

Select termination type from pages 1-68 through 1-74

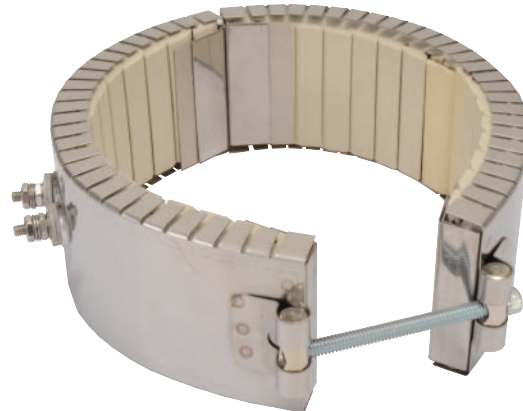
### Ceramic Band Construction Styles



#### One-Piece Band

The One-Piece Ceramic Band Heater is the basic design most often specified by OEMs and processors. It is available with all types of insulation, construction styles, clamping or termination variations.

**Min. ID:** 2" (50.8 mm)  
**Min. Width:** 1" (25.4 mm)  
**Max. ID:** 21" (533.4 mm)



#### Two-Piece Band

The Two-Piece Ceramic Band Heater is commonly used on sizes larger than 21" diameter or when it would be inconvenient to use a one-piece heater. It is available with all types of insulation, construction styles, clamping or termination variations.

**Min. ID:** 4" (101.6 mm)  
**Min. Width:** 1" (25.4 mm)  
**Max. ID:** 44" (1118 mm)

Larger sizes are manufactured in multiple sections. Watts and volts are specified per each section when ordering.

### Ceramic Band Construction Variation

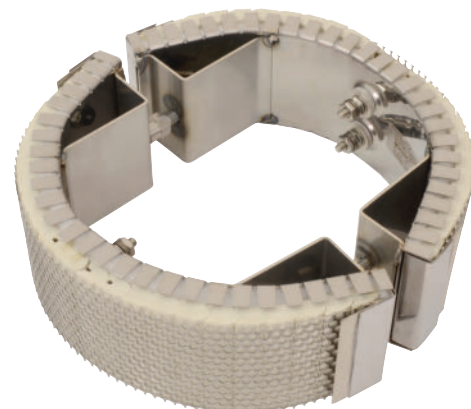
#### Type T: Reverse Band

Reverse Ceramic Band Heaters are intended for the outer surface of the band to heat the inner surface of a cylinder. These heaters use the same built-in insulation as normal ceramic bands and therefore can either reduce the power needed to heat an application to the desired temperature or offer some thermal protection to anything else that might also be inside the cylinder.

The specially designed internal brackets exert outward pressure to ensure good contact with the application surface. To aid in holding the internal components together during installation, reverse ceramic bands are supplied with a perforated stainless steel outer liner.

The outer diameter is the distinguishing characteristic and should match the inner diameter of the cylinder to be heated.

If airflow is needed for cooling, Tempco's Type R Uninsulated Ceramic Band with a perforated sheath is also available. This is also the same robust construction that can reach higher temperatures than other heater bands.



**Min. ID:** 5-1/2" (139.7 mm) **Max. ID:** 44" (1117.6 mm)  
**Min. Width:** 1" (25.4 mm) **Max. Width:** 4" (101.6 mm)

**View Product Inventory @ [www.tempco.com](http://www.tempco.com)**