

Terminations

Ceramic Band Type W1 – Abrasion Resistant Straight Wire Braid Leads

Straight Wire Braid Leads are available with all types of insulation, construction styles, and clamping variations. Wire braid leads offer sharp bending not possible with armor cable. If applicable, screw terminals should always be specified due to the high heat generated by ceramic bands. The standard leads are 10" of wire braid over 12" of flexible leads.

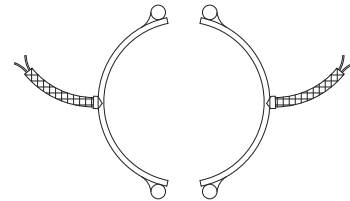
If longer leads are required, specify when ordering.



One-Piece Band

Standard Termination Location:
opposite the gap; center of width

- * **Minimum Inside Diameter:** 2" (50.8 mm)
- * **Minimum Width:** 1" (25.4 mm)
- * **Maximum Volts/Amps:** 480VAC/12.5A



Two-Piece Band

Standard Termination Location:
center of each half; center of width

- * **Minimum Inside Diameter:** 4" (101.6 mm)
- * **Minimum Width:** 1" (25.4 mm)
- * **Maximum Volts/Amps:** 480VAC/12.5A each half

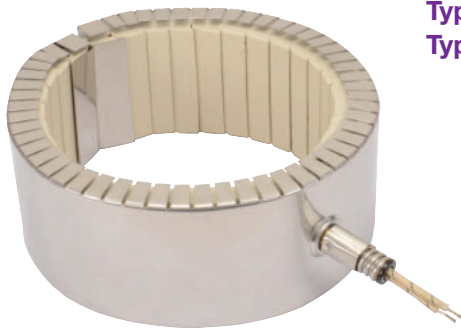
Available on Reverse Band

- * **Minimum Inside Diameter:** 5-1/2" (139.7 mm)

Ceramic Band Type R1 – Abrasion Resistant Straight Armor Cable

Straight Armor Cable is available with all types of insulation, construction styles, and clamping variations. Armor cable provides far superior protection to lead wires where abrasion is a constant problem. If applicable, screw terminals should always be specified due to the high heat generated by ceramic bands. The standard leads are 10" of armor cable over 12" of flexible leads.

If longer leads or electrical connectors are required, specify when ordering.



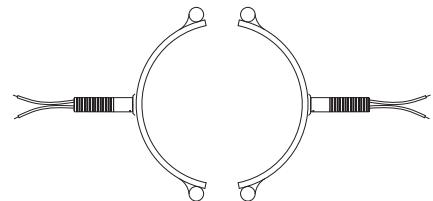
One-Piece Band

Standard Termination Location:
opposite the gap; center of width

- * **Minimum Inside Diameter:** 2" (50.8 mm)
- * **Minimum Width:** 1" (25.4 mm)
- * **Maximum Volts/Amps:** 480VAC/12.5A

Type R1A – Galvanized Steel Armor Cable

Type R1B – Stainless Steel Armor Cable



Two-Piece Band

Standard Termination Location:
center of each half; center of width

- * **Minimum Inside Diameter:** 4" (101.6 mm)
- * **Minimum Width:** 1" (25.4 mm)
- * **Maximum Volts/Amps:** 480VAC/12.5A each half

Available on Reverse Band

- * **Minimum Inside Diameter:** 5-1/2" (139.7 mm)