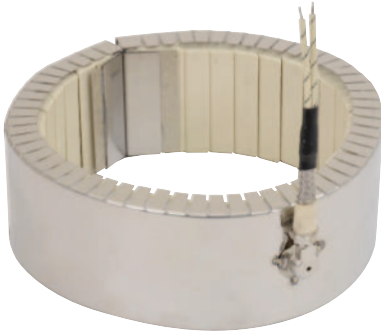


Ceramic Band

Ceramic Band Type W2M – Right-Angle Wire Braid Leads, 90° to Heater

Stainless Steel Wire Braid exits perpendicular to the heater centerline through a low profile stainless steel cap. This cap acts as a strain relief which protects against excessive flexing or pulling of the lead wire. The standard leads are 10" of wire braid over 12" of flexible leads.

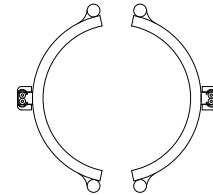
If longer leads are required, specify when ordering.



One-Piece Band

Standard Termination Location:
opposite the gap; center of width

- * Minimum Inside Diameter: 2" (50.8 mm)
- * Minimum Width: 1" (25.4 mm)
- * Maximum Volts/Amps: 480VAC/12.5A



Two-Piece Band

Standard Termination Location:
center of each half; center of width

- * Minimum Inside Diameter: 4" (101.6 mm)
- * Minimum Width: 1" (25.4 mm)
- * Maximum Volts/Amps: 480VAC/12.5A each half

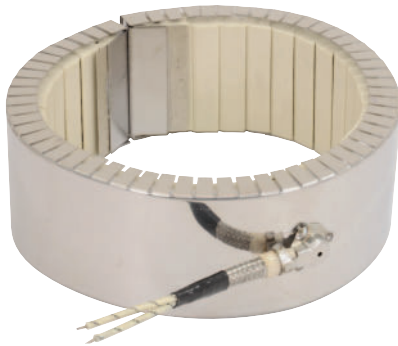
Available on Reverse Band

- * Minimum Inside Diameter: 5-1/2" (139.7 mm)

Ceramic Band Type W5M – Right-Angle Wire Braid Leads, Parallel to Heater

Stainless Steel Wire Braid exits parallel to the heater centerline through a low profile stainless steel cap. This cap acts as a strain relief which protects against excessive flexing or pulling of the lead wire. The standard leads are 10" of wire braid over 12" of flexible leads.

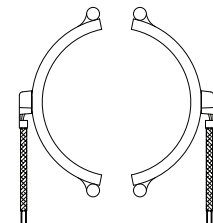
If longer leads are required, specify when ordering.



One-Piece Band

Standard Termination Location:
opposite the gap; center of width

- * Minimum Inside Diameter: 2" (50.8 mm)
- * Minimum Width: 1" (25.4 mm)
- * Maximum Volts/Amps: 480VAC/12.5A



Two-Piece Band

Standard Termination Location:
center of each half; center of width

- * Minimum Inside Diameter: 4" (101.6 mm)
- * Minimum Width: 1" (25.4 mm)
- * Maximum Volts/Amps: 480VAC/12.5A each half

Available on Reverse Band

- * Minimum Inside Diameter: 5-1/2" (139.7 mm)