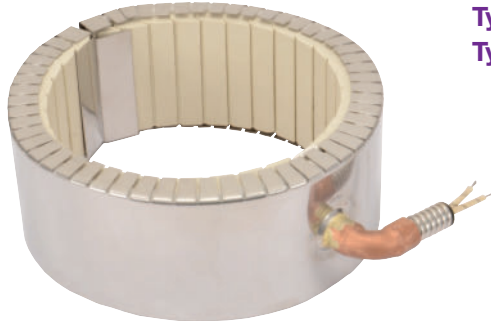


Ceramic Band Type R2 – Abrasion Resistant Right-Angle Armor Cable

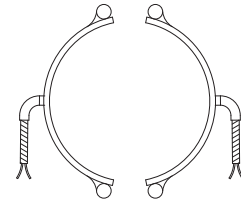
Right-Angle Armor Cable is available with all types of insulation, construction styles, and clamping variations. It is used where space is limited and abrasion is a constant problem. If applicable, screw terminals should always be specified due to the high heat generated by ceramic bands. The standard leads are 10" of armor cable over 12" of flexible leads.

If longer leads or electrical connectors are required, specify when ordering.



Type R2A – Galvanized Steel Armor Cable

Type R2B – Stainless Steel Armor Cable



One-Piece Band

Standard Termination Location:
opposite the gap; center of width

- * **Minimum Inside Diameter:** 2" (50.8 mm)
- * **Minimum Width:** 1" (25.4 mm)
- * **Maximum Volts/Amps:** 480VAC/12.5A

Two-Piece Band

Standard Termination Location:
center of each half; center of width

- * **Minimum Inside Diameter:** 4" (101.6 mm)
- * **Minimum Width:** 1" (25.4 mm)
- * **Maximum Volts/Amps:** 480VAC/12.5A each half

Available on Reverse Band

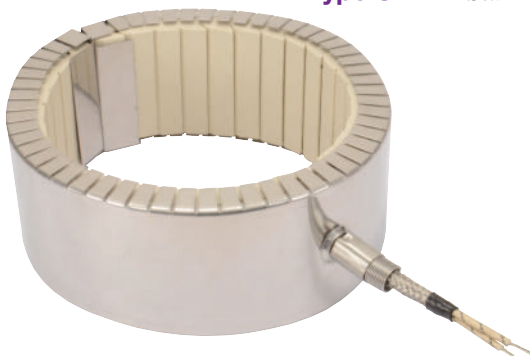
- * **Minimum Inside Diameter:** 5-1/2" (139.7 mm)

A strain relief spring is attached to the heater at the termination exit to reduce strain on leads subjected to excessive flexing. The spring is 2-5/8" long. The flexible standard leads are 10" long with 2-1/2" of fiberglass sleeving.

If longer leads are required, specify when ordering.

Type S1A – Plain Leads and Strain Relief Spring

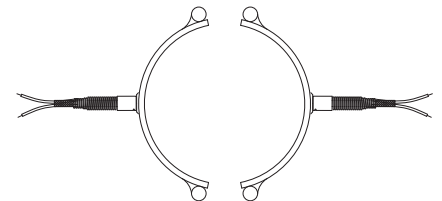
Type S1B – Stainless Steel Wire Braided Leads and Strain Relief Spring



One-Piece Band

Standard Termination Location:
opposite the gap; center of width

- * **Minimum Inside Diameter:** 2" (50.8 mm)
- * **Minimum Width:** 1" (25.4 mm)
- * **Maximum Volts/Amps:** 480VAC/12.5A



Two-Piece Band

Standard Termination Location:
center of each half; center of width

- * **Minimum Inside Diameter:** 4" (101.6 mm)
- * **Minimum Width:** 1" (25.4 mm)
- * **Maximum Volts/Amps:** 480VAC/12.5A each half

Available on Reverse Band

- * **Minimum Inside Diameter:** 5-1/2" (139.7 mm)