



Standard (Non-Stock) Circulation Heaters

16 watts/in² (2.5 watts/cm²) — Typical Applications: Medium Weight Oils • Heat Transfer Oils • Liquid Paraffin

* 304 Stainless Steel Screw Plug and Steel 150-lb Flanged Heater Sizes

* Steel Tank

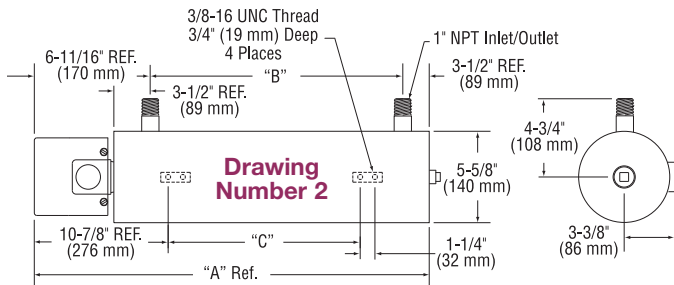
* Incoloy®800 Sheath Heating Elements

* NEMA 1 Terminal Housing

NOTE: 3-Phase only. Cannot be rewired for single phase.

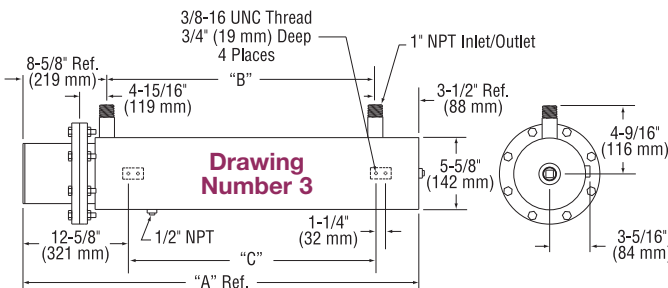
Nominal Pipe Size	Dimensional Drawing Number	KW	Part Number					Approximate Net Weight	
			120V	240V-1Ph (C*)	240V-3Ph (C*)	480V-1Ph (C*)	480V-3Ph (C*)	lbs	kgs
2½" NPT 3 elements	2.1	2	—	—	CHF01392 (1)	—	CHF01393 (1)	28	13
	2.1	2.5	—	—	CHF01394 (1)	—	CHF01395 (1)	29	13
	2.1	3	—	—	CHF01396 (1)	—	CHF01397 (1)	30	14
	2.2	4	—	—	CHF01398 (1)	—	CHF01399 (1)	37	17
	2.3	5	—	—	CHF01400 (1)	—	CHF01401 (1)	45	20
	2.3	6	—	—	CHF01402 (1)	—	CHF01403 (1)	46	21
3"-150lb 3 elements	3.1	2	—	—	CHF01404 (1)	—	CHF01405 (1)	53	24
	3.1	2.5	—	—	CHF01406 (1)	—	CHF01407 (1)	53	24
	3.2	3	—	—	CHF01408 (1)	—	CHF01409 (1)	61	28
	3.2	4	—	—	CHF01410 (1)	—	CHF01411 (1)	62	28
	3.3	5	—	—	CHF01412 (1)	—	CHF01413 (1)	74	34
	3.3	6	—	—	CHF01414 (1)	—	CHF01415 (1)	76	34

(C*) = Number of Branch Circuits per heater



Dimensional Drawing Number

Drawing Number	"A"		"B"		"C"	
	in	mm	in	mm	in	mm
2.1	32-11/16	830	22-1/2	572	16-1/2	419
2.2	42-11/16	1084	32-1/2	826	26-1/2	673
2.3	55-3/16	1402	45	1143	39	991
3.1	34-5/8	879	22-1/2	572	16-1/2	419
3.2	44-5/8	1133	32-1/2	826	26-1/2	673
3.3	57-1/8	1451	45	1143	39	991



Note: Circulation heater mounting lug design and location in the assembly drawings shown are standard. Designs can be modified to fit customer installation. Consult Tempco with your requirements.



CONTINUED →