

Circulation Heaters

Standard (Non-Stock) Circulation Heaters

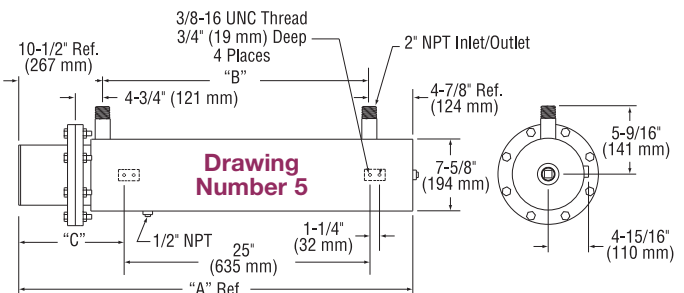
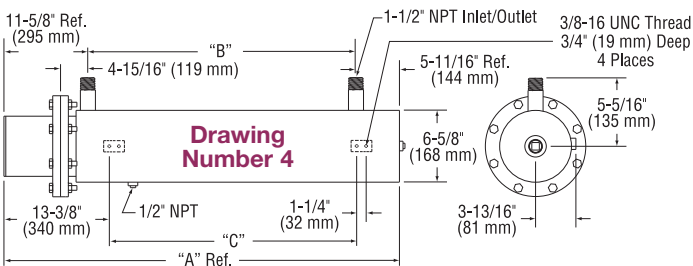
Continued from previous page...

16 watts/in² (2.5 watts/cm²) — Typical Applications: Medium Weight Oils • Heat Transfer Oils • Liquid Paraffin

NOTE: 3-Phase only. Cannot be rewired for single phase.

Nominal Pipe Size	Dimensional Drawing Number	KW	Part Number				Approximate Net Weight		
			120V	240V-1Ph (C*)	240V-3Ph (C*)	480V-1Ph (C*)	480V-3Ph (C*)	lbs	kgs
4"-150lb 6 elements	4.1	3	—	—	CHF01416 (1)	—	CHF01417 (1)	76	34
	4.1	4	—	—	CHF01418 (1)	—	CHF01419 (1)	78	35
	4.1	5	—	—	CHF01420 (1)	—	CHF01421 (1)	79	36
	4.2	6	—	—	CHF01422 (1)	—	CHF01423 (1)	91	41
	4.2	8	—	—	CHF01424 (1)	—	CHF01425 (1)	94	43
	4.3	10	—	—	CHF01426 (1)	—	CHF01427 (1)	117	53
	4.3	12	—	—	CHF01428 (1)	—	CHF01429 (1)	120	54
5"-150lb 6 elements	5.1	8	—	—	CHF01430 (1)	—	CHF01431 (1)	117	53
	5.2	10	—	—	CHF01432 (1)	—	CHF01433 (1)	128	58
	5.3	12	—	—	CHF01434 (1)	—	CHF01435 (1)	146	66
5"-150lb 9 elements	5.1	12	—	—	CHF01436 (1)	—	CHF01437 (1)	123	56
	5.2	15	—	—	CHF01438 (1)	—	CHF01439 (1)	135	61
	5.3	18	—	—	CHF01440 (1)	—	CHF01441 (1)	154	70
6"-150lb 12 elements	6.1	6	—	—	CHF01442 (1)	—	CHF01443 (1)	124	56
	6.1	8	—	—	CHF01444 (1)	—	CHF01445 (1)	127	58
	6.1	10	—	—	CHF01446 (1)	—	CHF01447 (1)	129	59
	6.2	12	—	—	CHF01448 (1)	—	CHF01449 (1)	152	69
	6.2	16	—	—	CHF01450 (1)	—	CHF01451 (1)	157	71
	6.3	20	—	—	CHF01452 (1)	—	CHF01453 (1)	197	89
	6.3	24	—	—	CHF01454 (2)	—	CHF01455 (1)	202	92
6"-150lb 15 elements	6.1	7.5	—	—	CHF01456 (1)	—	CHF01457 (1)	126	57
	6.1	10	—	—	CHF01458 (1)	—	CHF01459 (1)	130	59
	6.1	12.5	—	—	CHF01460 (1)	—	CHF01461 (1)	133	60
	6.2	15	—	—	CHF01462 (1)	—	CHF01463 (1)	156	71
	6.2	20	—	—	CHF01464 (1)	—	CHF01465 (1)	163	74
	6.3	25	—	—	CHF01466 (5)	—	CHF01467 (1)	164	74
	6.3	30	—	—	CHF01468 (5)	—	CHF01469 (1)	211	96
8"-150lb 18 elements	8.2	17	—	—	CHF01470 (1)	—	CHF01471 (1)	234	106
	8.3	25	—	—	CHF01472 (2)	—	CHF01473 (1)	264	120
	8.4	33	—	—	CHF01474 (2)	—	CHF01475 (1)	293	133
	8.5	42	—	—	CHF01476 (3)	—	CHF01477 (2)	327	148
	8.6	50	—	—	—	—	CHF01478 (2)	360	163
	8.7	58	—	—	—	—	CHF01479 (2)	395	179
	8.7	67	—	—	—	—	CHF01480 (2)	405	184
8"-150lb 24 elements	8.2	23	—	—	CHF01481 (2)	—	CHF01482 (1)	243	110
	8.3	33	—	—	CHF01483 (2)	—	CHF01484 (1)	277	126
	8.4	44	—	—	CHF01485 (4)	—	CHF01486 (2)	308	140
	8.5	56	—	—	CHF01487 (4)	—	CHF01488 (2)	346	157
	8.6	67	—	—	—	—	CHF01489 (2)	382	173
	8.7	77	—	—	—	—	CHF01490 (2)	420	191
	8.7	89	—	—	—	—	CHF01491 (4)	433	196
10"-150lb 27 elements	10.3	75	—	—	—	—	CHF01492 (3)	539	244
	10.5	87	—	—	—	—	CHF01493 (3)	615	279
12"-150lb 36 elements	12.3	100	—	—	—	—	CHF01494 (3)	694	315
	12.5	117	—	—	—	—	CHF01495 (3)	782	355
14"-150lb 45 elements	14.2	105	—	—	—	—	CHF01496 (3)	771	350
	14.3	125	—	—	—	—	CHF01497 (5)	828	376

(C*) = Number of Branch Circuits per heater



View Product Inventory @ www.tempco.com