

PPS Series Videographic Data Recorders



PPS-2000 Front View

Front Panel Features

- * **High resolution TFT LCD Color Touch Screen**
 - PPS-1000: 4.3", 480 × 272 resolution
 - PPS-2000: 5.6", 640 × 480 resolution
 - PPS-3000: 12.1", 1024 × 768 resolution
- * **SD slot for external memory: 16G or 32G**
- * **1st USB slot, for memory, auxillary or printer**
- * **Reset - To Reset and Restore factory settings**
- * **Start/Stop - To Start or Stop channel recording, or to turn the screen on or off**
- * **Front Door - Key locked for security**

Back Panel Features

- * **Multiple slots for Input/Output modules**
 - PPS-1000 4 slots, 6 analog channels maximum
 - PPS-2000 4 slots, 24 analog channels maximum
 - PPS-3000 16 slots, 48 analog channels maximum
- * **Optional RS-232/422/485 Serial communications**
- * **Ethernet port, standard for Internet/Intranet coms**
- * **2nd USB slot for memory, auxillary or printer**
- * **Power Switch**
 - Optional for panel style mounting
 - Standard for portable style mounting
- * **Power Terminals, for input power connections**



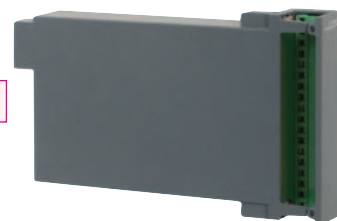
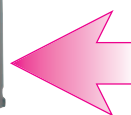
PPS-2000 Rear View

Input / Output Modules

* **Input/Output modules can be added or removed to the rear of the unit easily. The modules are locked in with screws.**

* **Input/Output module types are:**

- 6 - channel Analog Inputs
- 3 - channel Analog Inputs
- 6 - Relay Outputs, 5A 240V, NO and NC
- 6 - Digital Inputs
- 3 - Relay Outputs and 3 - Digital Inputs
- 6 - Analog Outputs



I/O Modules for Simple Expansion