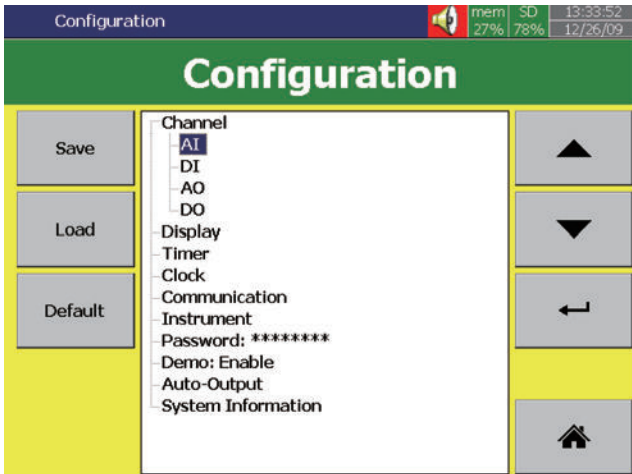
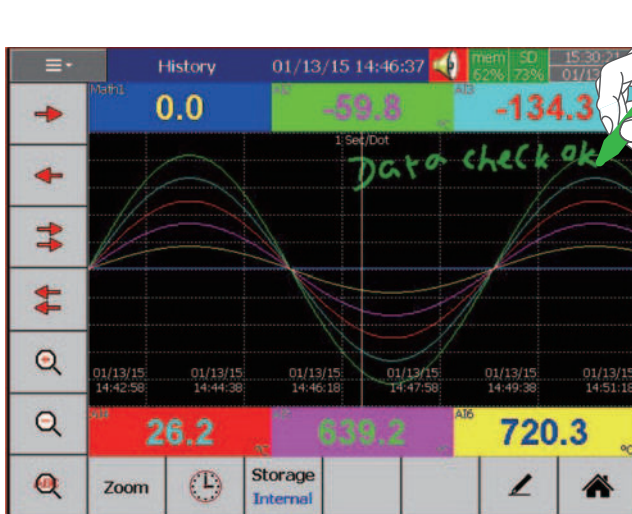


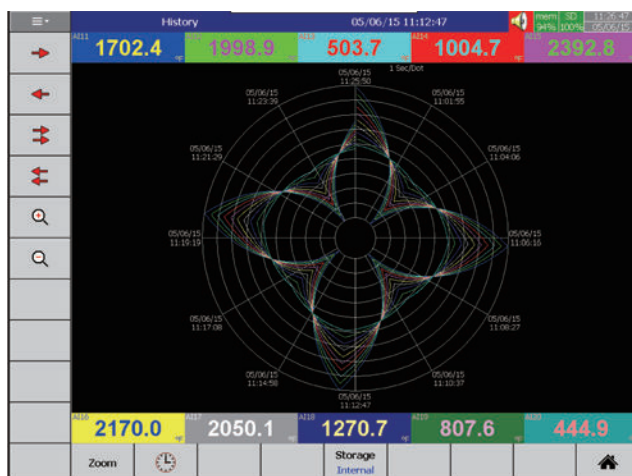
Firmware Features



Configuration in Indented Layout for easy operation



Free hand note taking, directly on the screen



Display simulates Circular Chart Recorder (PPS-3000 only)

Standard Firmware Package

- **AI:** Analog Input is offered in various logging speeds of 100mS, 1, 2, 5, 10, 20, 30 Sec., 1, 2 minutes
- **DI:** Digital Input can be configured for Normal Logic or High Frequency Pulse
- **AO:** Analog Outputs can be configured in mA or Volts and it's function defined.
- **DO:** Digital/Relay Outputs can be enabled for process functions
- **Display:** Various display speeds can be set in 100mS, 1, 2, 5, 10, 20, 30, Sec., 1, 2, 10, 30 min./page, 1, 2, 4, 8, 12 hrs./page, 1 day/page
- **Timer:** Timer configured in Countdown, Repeat Countdown, Daily, Weekly, of Monthly base and various jobs can be defined
- **Clock:** Date Style of MM/dd/yy or dd/MM/yy, Time Synchronize via Internet, and Daylight Savings Time can be defined
- **Communications:** Web Server and E-mail functions
- **Instrument:** Brightness adjustment & Screen Saver
- **Password:** If Normal Security is chosen, then one password is offered. If the high security of CFR-21 is chosen, then 9 levels of passwords can be defined
- **Demo:** Built-in Demonstration of the instrument's features can be activated

Optional Firmware Plus 1 Package

- Math, Counters and Totalizer functions within derived channels
- Derived Channels by Model Number:
PPS-1000: 15 derived channels
PPS-2000: 40 derived channels
PPS-3000: 60 derived channels
- High frequency pulse inputs can be configured from digital inputs
- With the CFR 21 security feature enabled, the PPS Series meets the requirements for electronic data for FDA 21 CFR part 11
- External Channel Input: The PPS Series is configurable as a Master or Slave device with the number of external channels varying by Model. The External Channels require Modbus RTU protocol over either the TCP/IP Ethernet port or the optional serial RS232/485
- Data log Batch start/stop allows batch data file name, file duration, lot number and up to 3 comments to be stored as part of the file

