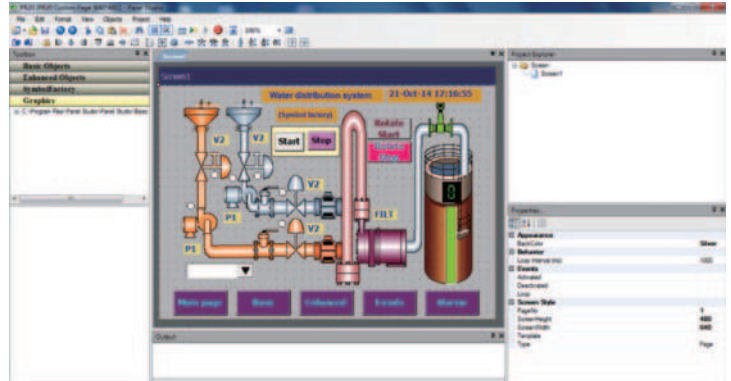


Firmware Features

Continued from previous page...

Optional Firmware Plus 2 Package

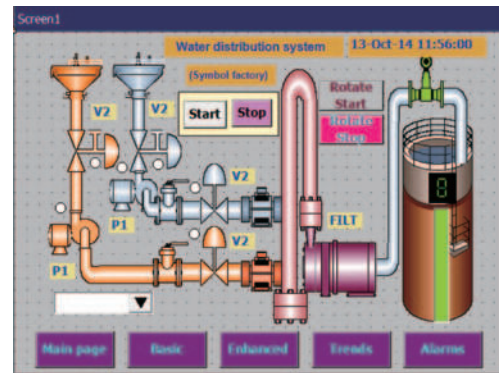
- Panel Studio development software allows the user to custom design display views that provide a graphical representation of the application including animation as well as digital and analog tags and values.
- The user can use Panel Studio to edit specific displays on the PC first and then download it onto the recorders.
- The custom edited displays will be added to the standard pages.



Create and edit the display on the PC

Optional Firmware Plus 3 Package

- This package is a combination of the Plus 1 and Plus 2 firmware features.
- It features Extended Math Functions, FDA 21 CFR part 11 compliance and Panel Studio development software.

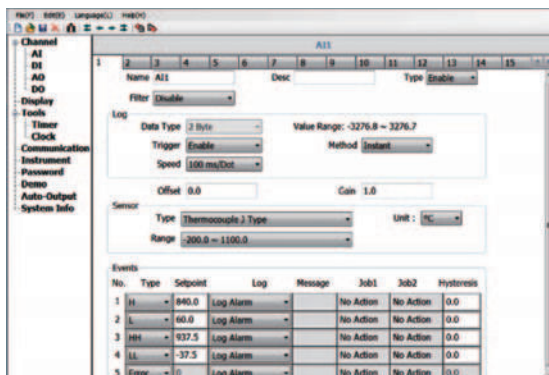


Download it into the Recorder

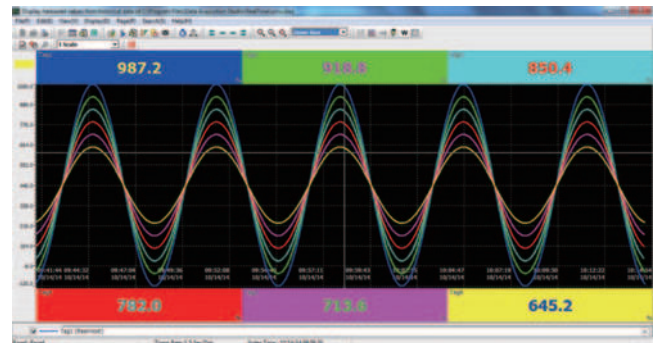
Software Features

Standard Basic Software

- **Configuration:** Create and edit recorder configurations including projects, analog channels, external and math channels, Events, Inputs, and Outputs, Power, etc. and download the configuration back to the recorder via LAN, SD or USB cards.
- **Historical Viewer:** Provides the capability to view, print, export (csv.) and archive PPS Series data files imported via LAN, SD or USB cards.



Configuring an Analog Input Channel



Historical view of multiple channels