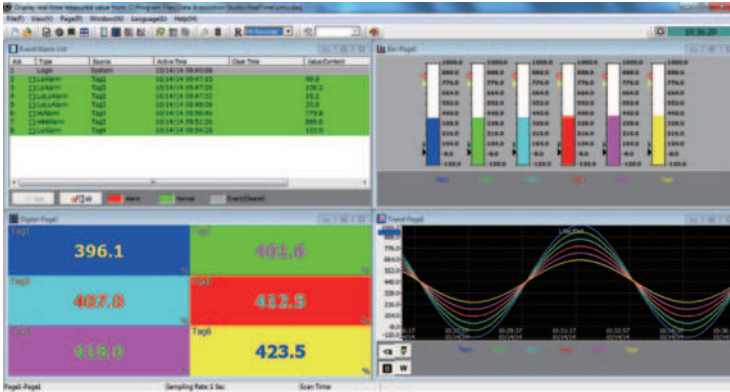


### Software Features (continued)

#### Optional Extensive Software Package

- In addition to the standard Historical Viewer Configuration software, the Extensive Software Package, includes the Data Acquisition Studio to provide Real Time Access from one to multiple PPS units (2,048 tags) via LAN or serial Modbus.
- Provides data logging functions within the software in the PC.
- The software allows real time viewing of standard screen views from specific PPS recorders, to download data log files and download/upload configuration files to the recorder via the LAN or serial Modbus.
- The PPS Data Acquisition Studio is fee based and requires a hardware dongle to be inserted into one of the PC's USB drives to fully function. Without the hardware dongle, the software may be installed and run for 1-hour and then it will stop functioning.



Real Time Viewer on the PC

### Rear Panel Layout



**PPS-1000**

4 slots, up to 6 Analog inputs



**PPS-2000**

4 slots, up to 24 Analog inputs



**PPS-3000**

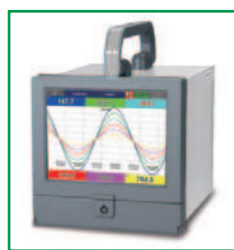
16 slots, up to 48 Analog inputs

### Portables

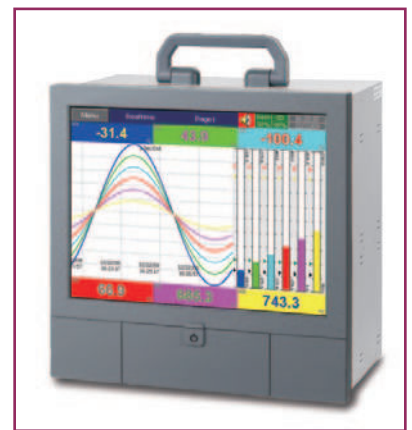
*The portable version of the PPS Series is supplied with a handle, 120VAC cordset, and rear mounted Power Switch.*



**PPS-1000**



**PPS-2000**



**PPS-3000**