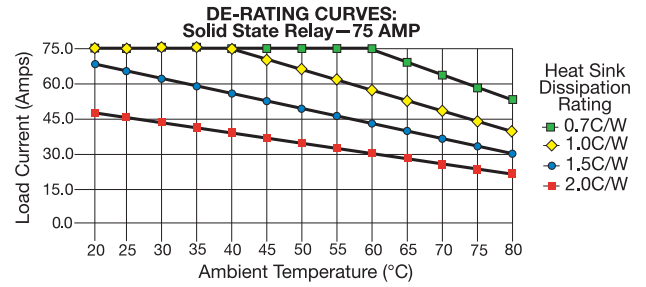
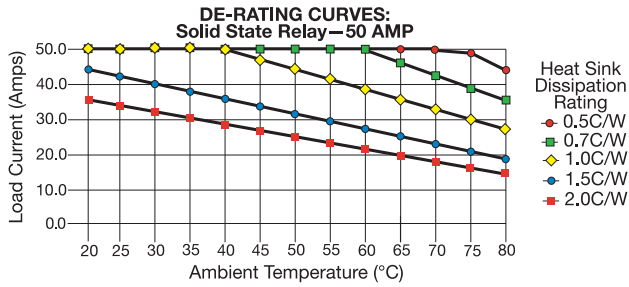


De-Rating Curves for Single-Phase Solid State Relays (continued)



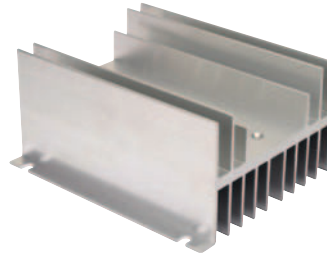
Standard Stock Heat Sinks for Solid State Relays



Part Number: RLS90017
Size: 1.77"W × 3.19"L × 3.15"H
Rating: 2.0°C/W
 Pre-drilled for 1-phase SSR (8-32)
 DIN rail or panel mount



Part Number: RLS90018
Size: 1.77"W × 3.19"L × 3.74"H
Rating: 1.5°C/W
 Pre-drilled for 1-phase SSR (8-32)
 DIN rail or panel mount



Part Number: RLS90019
Size: 4.75"W × 5.50"L × 2.63"H
Rating: 0.70°C/W
 Pre-drilled for one or two 1-phase SSR (8-32)
 Panel mount 4.50" × 4.42" centers



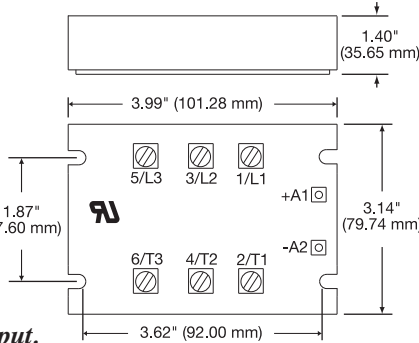
Part Number: RLS90020
Size: 3.00"W × 5.20"L × 2.37"H
Rating: 1.0°C/W
 Pre-drilled for one 3-phase SSR (8-32)
 DIN rail mount

Three-Phase Solid State Relays (SSRs)

Tempco's Three-phase Solid State Relays are a highly reliable alternative to mechanical or mercury contactors in high amperage or harsh environments. They offer years of trouble-free service and millions of cycles with no moving parts to wear out.

- * 3-phase normally open models—current ratings 25 Amp and 50 Amp
- * Zero-cross outputs for general applications
- * UL recognized, CSA certified and CE compliant
- * Back-to-back SCR output stages
- * AC or DC control inputs
- * Single output type for 48 through 530 VAC

- Select a **DC control** input relay to work with a temperature control having an **SSR drive output**.
- Choose an **AC control** input relay to work with a temperature control having a **mechanical relay output**.



All Items Available from Stock



Standard Stock Three-Phase Relays

Nominal Output Voltage Control Input	48 through 530 VAC			Load Current
	4-32 VDC	90-140 VAC	180-260 VAC	
Part Number	RLS36125 RLS36150	RLS36226 RLS36250	RLS36227 RLS36251	25A 50A
Max. Line Voltage Range (VAC, rms)	48 through 530 VAC			
Max. Off-State Voltage (Vpeak)	±1100	±1100	±1100	
Min. Control Current (mA)	24	7	7	
Max. Off-State Leakage (mA rms)	0.06	On-State Voltage Drop (Vpeak) 1.35		
Static (Off-State) Δv/Δt (V/μS)	500	Min. On-State Current (mA) 100		
Operating Temp. Range (°C)	-20 to 80	Line Frequency Range (Hz) 47 to 63		
	(°F) -4 to 176			



Note: Adequate heat sinking, including consideration of air temperature and flow, is essential to the proper operation of a solid state relay.

CONTINUED ➔