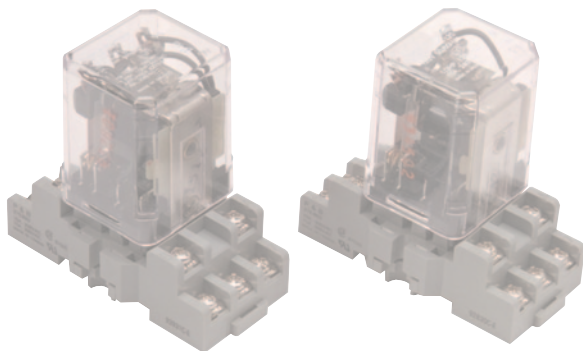


DIN Rail Mounted Mechanical Relays



Design Features

- * 10 and 15 Amp Models with 24 VDC, 120 and 240 VAC Coils
- * Sockets Mount on Standard 35 mm DIN Track
- * Silver-Cadmium Oxide Contacts
- * Socket and Relay Separation Fast and Easy
- * UL and CSA Component Recognition
- * Compact for Easy DIN Rail Installation
- * Contact Arrangement Up to 3PDT
- * Enclosed to Prevent Contamination

Standard DIN Rail Mount Relay Specifications

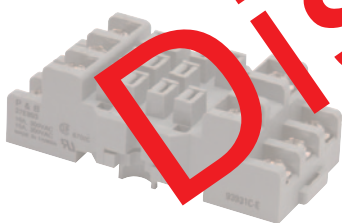
Common Usage @ 240VAC	Coil Voltage	Poles	Potter & Brumfield Cross Reference Number	TEMPCO Part Number
10A	24 VDC	1	KUP-5D15-24	RLM01103
10A	120 VAC	1	KUP-5A15-120	RLM01101
10A	240 VAC	1	KUP-5A15-240	RLM01102
10A	24 VDC	2	KUP-11D15-24	RLM02103
10A	120 VAC	2	KUP-11A15-120	RLM02101
10A	240 VAC	2	KUP-11A15-240	RLM02102
10A	24 VDC	3	KUP-14D15-24	RLM03103
10A	120 VAC	3	KUP-14A15-120	RLM03101
10A	240 VAC	3	KUP-14A15-240	RLM03102
15A	24 VDC	2	KUMP-11D18-24	RLM02153
15A	120 VAC	2	KUMP-11A18-120	RLM02151
15A	240 VAC	2	KUMP-11A18-240	RLM02152
15A	24 VDC	3	KUMP-14D18-24	RLM03153
15A	120 VAC	3	KUMP-14A18-120	RLM03151

Electrical Contact Ratings

Type	UL/CSA Ratings	Exp. Life
1-2 Pole KUP	10 Amps @ 28 VDC or 240 VAC, 80% PF 5 Amp tungsten @ 240 VAC, 3A	100,000 cycles
KUMP	600 VAC, 1/2 Amp @ 120 VDC	
3-Pole KUP	1/2 HP @ 240 VAC, 1/2 HP @ 240, 180, and 600 VAC, 10 FLA 30 LRA @ 120 VAC, 5 FLA, 15 LRA @ 250 VAC (FLA ratings covered by 30,000 operations)	100,000 cycles
KUMP	15 Amp @ 277 VAC, 80% PF	
3-Pole KUP	10 Amp @ 28 VDC or 120 VAC, 80% PF, 6-2/3 Amp @ 240 VAC, 80% PF	100,000 cycles

DIN Rail Mounted Mechanical Relay Accessories

Universal Rail Mounted Socket



Universal socket for mounting 1- to 3-pole relays to a 35mm DIN rail track or surface mounted directly to a panel. A spring-loaded latch allows for easy installation or removal from a DIN mounting track. High strength, durable plastic body with 3/16" quick connect/solder; silver-cadmium oxide terminals for relay mounting.

Dimensions with Relay (approximate): 3" x 1-1/2" x 3"

Part Number: RLM90001

Part Number: RLM90004 — Relay Hold Down Spring



Universal 35 mm DIN Rail Track



Made out of extruded aluminum with holes on 6" centers. Holes accept #8 screws and the rail accepts the offered socket as a simple clip-on mount.

Dimensions: 36" (914mm) long

Part Number: EHD-134-102

Ordering Information

Choose the **Part Number** of the Relays and accessories that best fit the needs of your application.

Standard lead time is stock to 5 days.

WARNING: Cancer and Reproductive Harm - www.P65Warnings.ca.gov.

(800) 323-6859 • Email: sales@tempco.com