

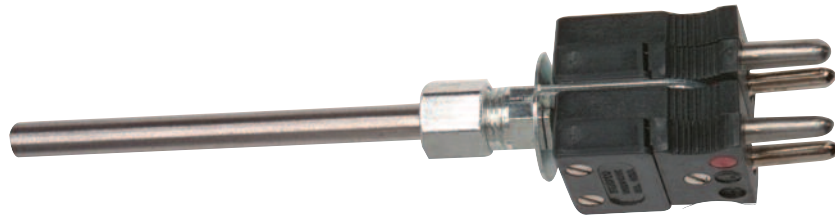
### Accessories for Standard Plugs and Jacks

Continued from previous page...

#### Dual Tube Adapters

- \* Assemble Standard Connectors into Dual Connectors
- \* For adjacent TEMPCO-PAK
- \* Has Brass Ferrule
- \* Use 2-Pin Connectors only

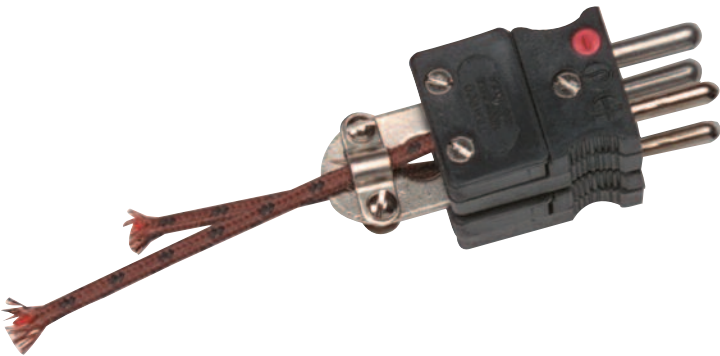
Sheath Diameter	Part Number
.063"	TCA-103-112
.125"	TCA-103-113
.188"	TCA-103-114
.250"	TCA-103-115
.313"	TCA-103-116
.375"	TCA-103-117



#### Dual Cable Clamps

- \* Assemble Standard Connectors into Dual Connectors
- \* Accommodate either One or Two Lead-In Cables
- \* Use 2-Pin Connectors only

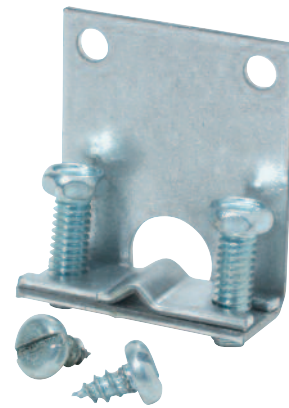
Part Number: **TCA-107-103**



#### Thermocouple Bracket

- \* Used to mount T/C Probes on Panel or Oven Walls
- \* Supplied with two #6 Self-Tapping Screws

Part Number: **SMPR-1062**



#### Filler Plate Set

- \* When combined with Dual Tube Adapter or Dual Cable Clamp, the Filler Plate Set provides the 3/4" pin spacing of a single Duplex Connector.

Part Number: **TCA-107-104**

