

Finned Air-Cooled

Standard Cast-In Finned Heater Designs for Air-Cooled Extruder Systems

Aluminum Finned Cast-In Band Heaters are used as an alternative to Liquid Cooled Cast-In Band Heaters for heating and cooling the barrels of plastic extruders.

As a standard, Finned Cast-In Band Heaters are manufactured in aluminum alloys because this material provides very good thermal conductive properties. For applications requiring higher operating temperatures and/or higher watt densities, bronze or brass alloys can be used.

Precision machining of the inside diameter yields superior heat transfer between the heater and the machine barrel, thereby

ensuring uniform heating and cooling of the extrusion process. The heaters are secured to the barrel either by Stainless Steel Clamp Bands or by means of Bolt Clamping the heater halves together.

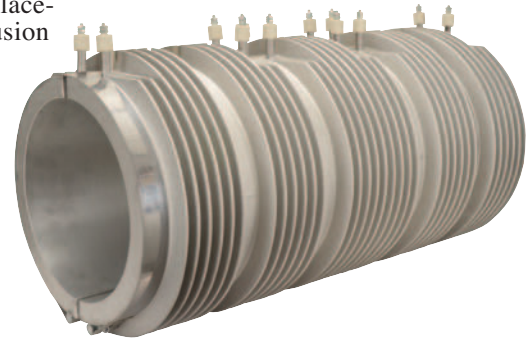
Finned Cast-In Band Heaters can be designed to meet the mechanical and physical constraints of existing extruder shroud systems. They are manufactured for Original Equipment Manufacturers (OEM) and maintenance (MRO) applications to customer specifications.

Finned Cast-In Heater End Types

Type FS1 – Finned Cast-In Heater without Side Flanges

These cast-in band heaters are normally made to be used in conjunction with the Cool to-the Touch and Multi-Versal Shroud Systems. They can also be used as stand alone replacements for other heating and cooling extrusion systems.

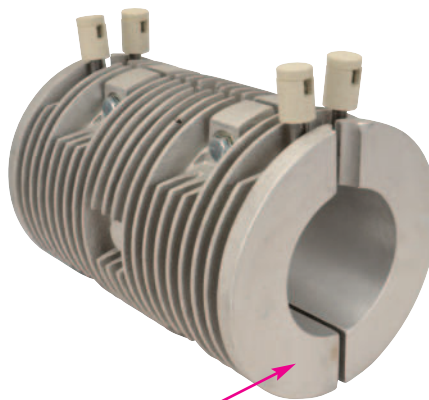
The standard mounting method for these designs is bolt clamping. An alternative mounting method is to use stainless steel straps. Type "T" screw terminals are the standard termination. For other termination styles see pages 3-54 and 3-55.



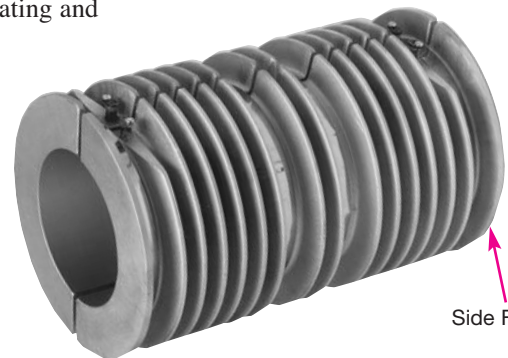
Type FS2 – Finned Cast-In Heater with Side Flanges

These cast-in band heaters are normally made to be used in conjunction with the Arctic Cast Shroud System. They can also be used as stand alone replacements for other heating and air cooling extrusion systems.

The standard mounting method for these designs is bolt clamping. An alternative mounting method is to use stainless steel straps. Type "E" screw terminals are the standard termination. For other termination styles see pages 3-54 and 3-55.



Side Flange



Side Flange

Ordering Information

See Page 3-47 for complete Ordering Information.