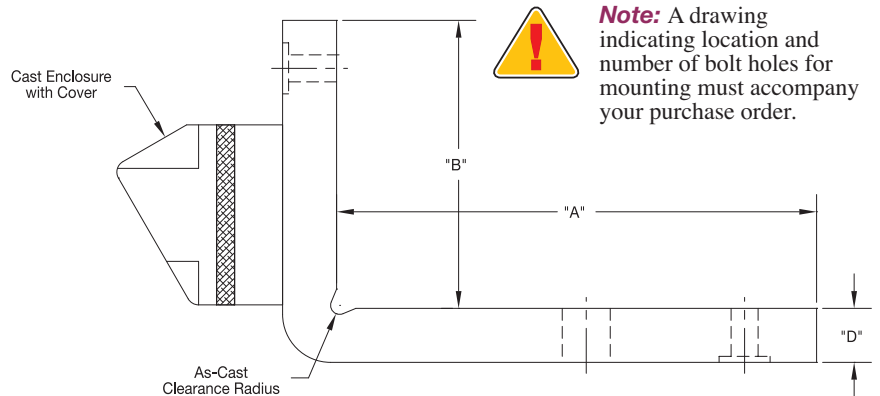
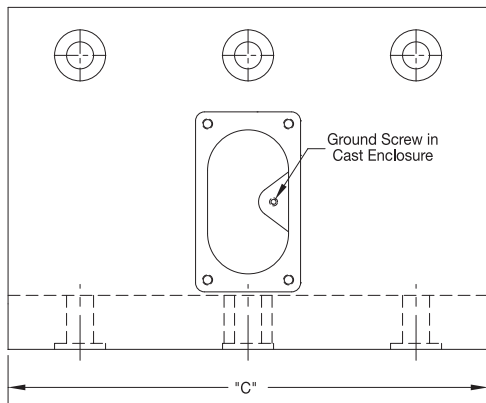


### "L" Shaped Cast-In Heaters Bolt Direct to Barrel Style Ordering Information



**Note:** A drawing indicating location and number of bolt holes for mounting must accompany your purchase order.

### "L" Shaped Cast-In Heaters Bolt Direct to Barrel Style

**Dimensions**

"A" \_\_\_\_\_ "B" \_\_\_\_\_ "C" \_\_\_\_\_  
 "D" \_\_\_\_\_

### Ordering Information

To process your order or quotation, please specify the following information.

**Material Specifications**

Aluminum  Bronze  Brass

**Electrical Specifications**

Watts each piece \_\_\_\_\_ Volts each piece \_\_\_\_\_ Phase \_\_\_\_\_

**Termination Style**

"S" Post Terminals  "T7" Post Terminals  "T" Mica Washers  
 "R1" Armor Cable Leads  "E" Right-Angle Lugs

**Terminal Protection Box**

None  "C2" Standard  Cast on box as shown  
 "EP" Explosion Resistant  "MR1" Rigid Moisture Resistant Box  
 "MPR" Moisture Resistant Box  "P2" High Temperature Quick Disconnect

**Clamping Style**

Bolt Clamp  Other

**Cooling Tube Specifications**

1/4" O.D. SS  3/8" O.D. SS  1/2" O.D. SS  
 3/8" O.D. Incoloy®  1/2" O.D. Incoloy®  Dual Cooling Tubes  
 Standard Wall Thickness  Other Wall Thickness, Specify \_\_\_\_\_  
 (See page 3-5 for Standard Wall Thickness Information)

**Cooling Tube Fittings**

Non-exposed 3/8" NPTF  "HS" Hi-Seal Fitting  "RA" 90° Copper Elbow  
 Non-exposed 1/2" NPTF  "RT" 90° Threaded Elbow  
 "FF" Flared Seal  "R3" Straight Threaded

**Surface Finish**

125 RMS Standard or to Customer Specifications

**Special Cast-In Features**

Holes, Cutouts, Slots, Bevels, Mounting Studs, Stand-Offs and Taper Angles.  
**For special features a detailed drawing is required.**

**⚠ WARNING:** Cancer and Reproductive Harm - [www.P65Warnings.ca.gov](http://www.P65Warnings.ca.gov).