



INSUL-LOCK® DS Flexible Closed Cell Pipe Insulation

Design Features

- * Easy to install with precise fit
- * Double Seal Technology
 - Built-in pressure sensitive adhesive
 - Built-in PVC overlap tape with acrylic adhesive
- * Scrim reinforcement on the seam surface
- * Non-porous, fiber-free, and resistant to mold growth
- * Resistant to moisture vapor flow
- * Compatible with heating cable and tapes

Specifications

Material: Environmentally-friendly, CFC-free, flexible elastomeric thermal insulation

Operating Temperature Range:
-70°F (-57°C) through 220°F (104°C)

R-value: 3

Color: Black

Length: 6.0 feet (1.8 meter)

Thickness: 0.5" (1.3 cm)

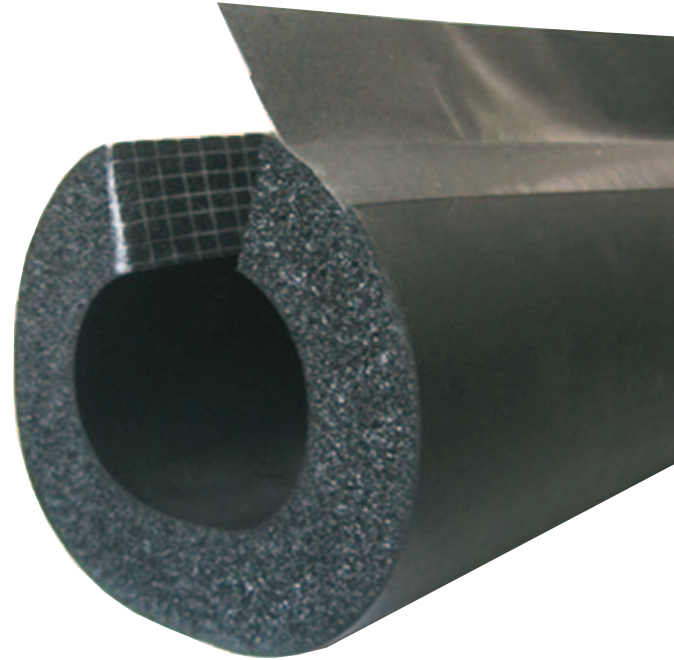
Density: 3 to 6 Lbs/ft³

Water vapor permeability:

Dry cup (Elastomeric insulation) 0.03 perm-in
Wet cup (Glued seam with overlap) 0.12 perm-in

Water absorption % (Volume change): 0

Flammability: UL-94 5 V-A, V-O



Typical Applications

- Freeze Protection
- Prevent condensation on refrigerant lines, cold water plumbing, roof drains, and chilled water systems
- Many other outdoor and indoor applications



Standard Closed Cell Pipe Insulation

Preformed pipe insulations are 1/2 inch thick, 6 foot long with overlap flap with Pressure Sensitive Adhesive (PSA).

Nominal ID	Nominal OD	Recommended for Pipe OD	Part Number
7/8"	2-1/8"	3/4"	HTP90060
1-1/8"	2-3/8"	1"	HTP90061
1-3/8"	2-5/8"	1-1/4"	HTP90062
1-5/8"	2-7/8"	1-1/2"	HTP90063
2"	3-1/8"	none	HTP90064
2-3/8"	3-1/2"	none	HTP90065
2-5/8"	4"	none	HTP90066
2-7/8"	4-1/8"	none	HTP90067
3-1/8"	4-1/2"	none	HTP90068
3-1/2"	5"	none	HTP90069



SEAM-SEALING TAPE

Seals spaces between multiple pieces of insulation and prevents heat loss.

.75" (51mm) x 180" (4.5 m) roll.

Part Number: HTP90058