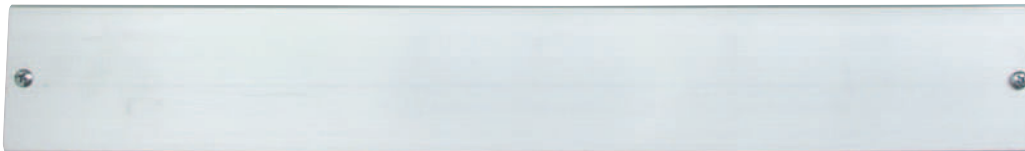
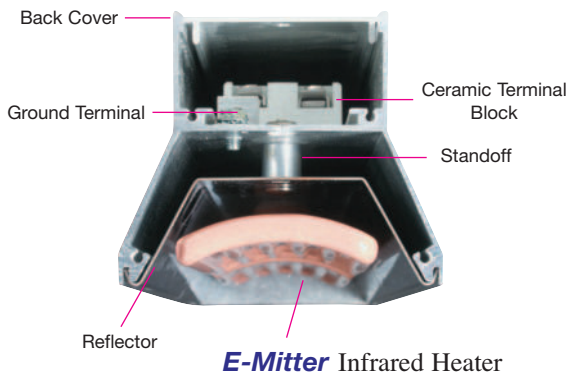


CRA Linear Heater Assemblies — Construction



Easiest Replacement of Heaters in the Industry

E-Mitters are easily replaced by removing the top cover. Wiring entrance side covers are not affected. The heater lead wires are insulated with ceramic beads and connected to ceramic terminal blocks. Heaters can be wired to function individually or grouped into heating zones.



Design Features

- * Designed for use with E-Mitters CRB, CRC, CRN and CRZ
- * Lightweight extruded aluminum housing with 5/16-18 mounting bolts for use up to 250°C (482°F) extrusion temperature
- * E-Mitters are easily replaced by removing the top cover
- * Internal mounting hole pattern simplifies mixing and matching E-Mitter sizes and ratings
- * Space between reflector and housing wall offers a good thermal barrier to protect the wiring area
- * This CRA structural housing can be used with any manufacturer's standard 60 × 245 mm -or- 60 × 122 mm heaters
- * Wiring entrance 7/8" Diameter at both ends, for 1/2" trade size electrical fittings

Wiring Options

Prewired with Plain Leads, Armor Cable or Wire Braid (includes ground wire)

Stainless steel armor cable — 18" armor cable over 24" leads

Galvanized armor cable — 18" armor cable over 24" leads

Stainless steel wire braid — 18" wire braid over 24" leads

Fiberglass leads (450°C rating) — 12" long plain leads

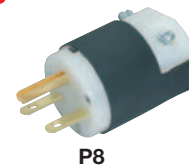
If longer leads and/or longer armor cable are required, specify when ordering.

Prewired with 24" SJO Cable (includes ground wire)

- 16 ga. cable (Up to 15 Amps)
- 14 ga. cable (Up to 22 Amps Max.)
- 12 ga. cable (Up to 28 Amps Max.)
- Max. terminal box temperature 194°F (90°C)
- If longer cable is required, specify when ordering.

Stock Heavy Duty Quick Disconnect Plugs and Connectors

Reference	NEMA P or R	Max. Amps	Volts	Plug Part Number	Connectors (Female) Part Number
P8 straight	6-15	15A	250V	EHD-102-114	EHD-103-139
P3 straight	5-15	15A	125V	EHD-102-103	EHD-103-102
P4 twist lock	L5-15	15A	125V	EHD-102-113	EHD-103-104
P5 twist lock	L6-15	15A	250V	EHD-102-121	EHD-103-107



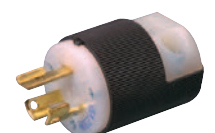
P8



P3



P4



P5



Optional Electrical Plugs listed can be attached to armor cable, HPN cord or plain leads described under wiring Options. Connectors listed are cable mount matching units for the plugs listed and are ordered separately. See page 15-15 for additional plugs and connectors.