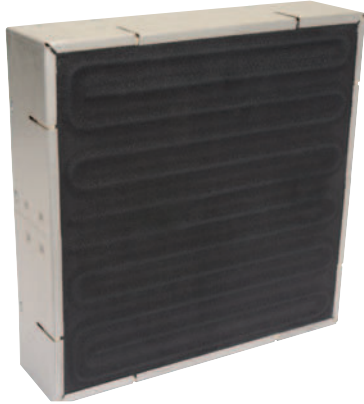


Style RPB Panel Heater

Style RPB Black Quartz Composite Face Infrared Panel Heaters



Design Features

- * Panel heater can be mounted in any direction
- * High temperature black quartz composite face
- * High temperature black coating
- * Precision wound resistance wire
- * Heavy gauge aluminized steel enclosure box standard
Optional: 304 Stainless Steel
- * Optional: quartz thermowell tube
Standard: side mount with clamp
Optional-3 back mounted styles
- * Refractory blanket insulation
- * Stainless Steel power screw terminals
- * Mounting screw studs
Standard: 1/4-20 x 1"L
- * Electrical junction box, standard

Construction Characteristics

Tempco Style RPB panel infrared heaters have a woven silica quartz composite surface that is transparent to radiant energy and is coated with a high temperature black coating for high emissivity.

The resistance wire is helically wound from a high temperature iron/chromium/aluminum alloy. A uniform pattern across the face is milled out in the high temperature ceramic fiberboard, and the resistance coil is cemented in place. Refractory blanket insulation backs up the fiberboard face assembly.

Tempco Style RPB Radiant Heaters can transmit up to 79.5% of the input energy and can be positioned as close as 2 to 4" from the material being heated.

Typical Applications

- ↔ Thermoforming
- ↔ Paint Drying
- ↔ Ink Drying
- ↔ Curing of Plastic Coatings
- ↔ Silk Screen Painting
- ↔ Food Warming
- ↔ Laminating

SPECIFICATIONS

Maximum Size: In addition to the standard sizes listed below; custom sizes up to 30"W x 84"L can be manufactured.

Thickness: Standard — 3", Optional — 1.5" to 5"

Maximum Watt Density: 25 Watts/in²

Maximum Voltage: Voltage can be single, dual or 3-phase up to 600 VAC (depending on heater size and wattage)

Maximum Face Temperature: 900°C (1652°F)

Wavelength Range: Between 2.5 and 6.0 microns (μm)

Distributed Wattage and Zoning: Yes, dependent on size

Infrared / Convection Radiant Panels

RPB Radiant Panels can also be supplied for combination radiant/convection applications. Holes are drilled in a uniform pattern in the face of the panel to allow air flow from the rear plenum. A 3" hole is typically provided in the rear panel for mounting a blower or ductwork. Submit your requirements to Tempco.

Standard (Non-Stock) Sizes and Ratings of Style RPB Black Face Infrared Heaters

To complete the part numbers below, include the designated number that applies to the following options:

0 = Plain, no thermowell or T/C **1** = Thermowell only **2** = Thermowell and type K T/C **3** = Thermowell and type J T/C

Available Thermowell/Thermocouple types and descriptions can be found on page 7-95.

For the part numbers below, if a thermowell is specified, the standard Side Mount Thermowell with Clamp is supplied.

| Width | | Length | | 15W/in ² | | | Part Number | 25W/in ² | | | Part Number |
|-------|-----|--------|------|---------------------|---------|-----|-------------|---------------------|---------|-----|-------------|
| in | mm | in | mm | Watts | Volts | Ph. | | Watts | Volts | Ph. | |
| 6 | 152 | 12 | 305 | 1080 | 120 | 1 | RPB0101__ | 1800 | 240/480 | 1 | RPB0201__ |
| 6 | 152 | 18 | 457 | 1620 | 240 | 1 | RPB0102__ | 2700 | 240/480 | 1 | RPB0202__ |
| 6 | 152 | 24 | 610 | 2160 | 240/480 | 1 | RPB0103__ | 3600 | 240/480 | 1 | RPB0203__ |
| 6 | 152 | 30 | 762 | 2700 | 240/480 | 1 | RPB0104__ | 4500 | 240/480 | 1 | RPB0204__ |
| 12 | 305 | 12 | 305 | 2160 | 240/480 | 1 | RPB0107__ | 3600 | 240/480 | 1 | RPB0207__ |
| 12 | 305 | 18 | 457 | 3240 | 240/480 | 1 | RPB0108__ | 5400 | 240/480 | 1 | RPB0208__ |
| 12 | 305 | 24 | 610 | 4320 | 240/480 | 1 | RPB0109__ | 7200 | 240 | 3 | RPB0209__ |
| 12 | 305 | 30 | 762 | 5400 | 240/480 | 1 | RPB0110__ | 9000 | 240 | 3 | RPB0210__ |
| 12 | 305 | 36 | 914 | 6480 | 240 | 3 | RPB0111__ | 10800 | 480 | 3 | RPB0211__ |
| 12 | 305 | 48 | 1219 | 8640 | 240 | 3 | RPB0112__ | 14400 | 480 | 3 | RPB0212__ |
| 18 | 457 | 18 | 457 | 4860 | 240/480 | 1 | RPB0117__ | 8100 | 240 | 3 | RPB0217__ |
| 24 | 610 | 24 | 610 | 8640 | 240 | 3 | RPB0118__ | 14400 | 480 | 3 | RPB0218__ |