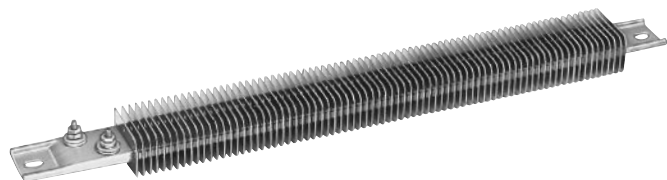


## Standard (Non-Stock) and Stock Sizes and Ratings



Stock Items Are Shown In **RED**

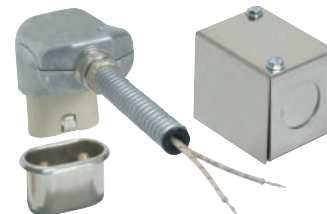
Length in mm	Wattage	Watt Density		Part Number	
		W/in <sup>2</sup>	W/cm <sup>2</sup>	120V	240V
8½ 215.9	250	18	3	<b>CSF00252</b>	
10½ 266.7	350	17	3		CSF00039
10½ 266.7	500	24	4	<b>CSF00129</b>	<b>CSF00130</b>
10½ 266.7	600	33	5	CSF00042	
10½ 266.7	725	40	6	<b>CSF00044</b>	<b>CSF00045</b>
10½ 266.7	850	47	7	<b>CSF00209</b>	
12 304.8	500	19	3	CSF00047	
12 304.8	900	34	5	CSF00053	<b>CSF00054</b>
14 355.6	750	23	3	<b>CSF00056</b>	CSF00057
14 355.6	1100	36	6	<b>CSF00060</b>	<b>CSF00061</b>
15¼ 387.4	1000	27	4	CSF00065	
15¼ 387.4	1250	33	5	<b>CSF00143</b>	<b>CSF00067</b>
17⅞ 454.0	1000	23	3	CSF00071	
17⅞ 454.0	1300	28	4	CSF00073	
17⅞ 454.0	1550	30	5	CSF00148	CSF00075
19½ 495.3	1250	24	4		CSF00077

## Finned Strip Heaters with T4 Terminals

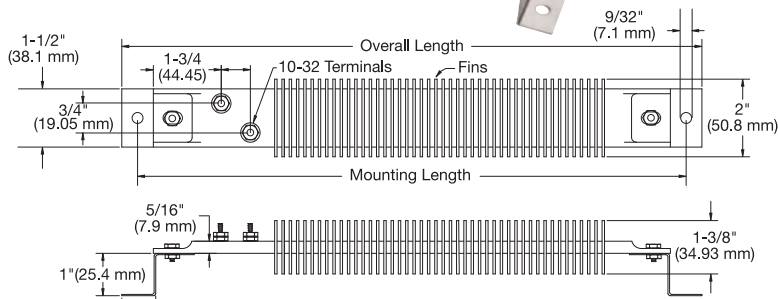
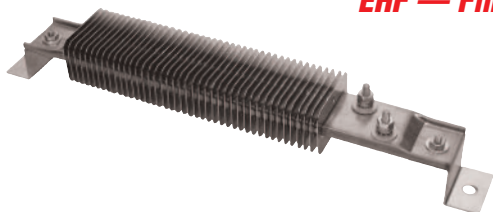
Stock Items Are Shown In **RED**

Length in mm	Wattage	Watt Density		Part Number	
		W/in <sup>2</sup>	W/cm <sup>2</sup>	120V	240V
19½ 495.3	1700	32	5	—	<b>CSF00080</b>
21 533.4	1900	33	5	CSF00158	<b>CSF00085</b>
23¼ 603.3	1000	15	2	—	<b>CSF00528</b>
23¼ 603.3	1450	22	3	—	CSF00088
23¼ 603.3	2200	33	5	—	<b>CSF00090</b>
25½ 647.7	2400	33	5	—	<b>CSF00094</b>
26¼ 679.5	2500	32	5	—	<b>CSF00100</b>
30½ 774.7	1800	20	3	—	CSF00102
30½ 774.7	2800	28	4	—	CSF00104
33½ 850.9	3150	31	5	—	<b>CSF00180</b>
35⅞ 911.2	2000	18	3	—	<b>CSF00350</b>
35⅞ 911.2	3450	31	5	—	<b>CSF00110</b>
42½ 1079.5	4150	31	5	—	<b>CSF00117</b>

**NOTE:** Type C – Terminal Box and Type P – High Temperature Quick Disconnect Plug are available. See page 8-6 for details.



## EHF — Finned Channel Strip Enclosure Heaters



**NOTE:** See page 7-41, 9-18 and 11-114 for other type enclosure heaters.

### Design Features

- \* 10-32 offset screw terminals (T4 style) standard, other terminations available
- \* UL recognized component
- \* Stainless steel sheath and fins
- \* Easy installation with special enclosure mounting brackets

## Stock and Standard (Non-Stock) Series EHF Heaters

Stock Items Are Shown In **RED**

Overall Length	Mounting Dimension	Watts	Part Number	
			120V	240V
12.125	11.375	200	<b>EHF00001</b>	EHF00002
15.625	14.875	350	<b>EHF00003</b>	EHF00004
19.5	18.75	450	<b>EHF00005</b>	EHF00006
25.375	24.625	700	EHF00007	EHF00008

## Ordering Information

### Catalog Heaters

Select a Finned Strip Heater from the Standard Sizes and Ratings lists on pages 8-14 and 8-15.

Finned Strip Heaters whose Part Numbers are in **RED** are available from Stock for immediate delivery.

Standard Non-Stock Part Numbers have a 3-week lead time.

### Custom Engineered/Manufactured Heaters

An electric heater can be very application specific; for sizes and ratings not listed, **TEMPCO** will design and manufacture a Finned Strip Heater to meet your requirements. **Standard lead time is 3 weeks.**

**Please Specify** the following:

- Type of Application
- Length
- Wattage
- Voltage
- Termination Type
- Secondary Bushings (see page 8-13)
- Igloo™ Ceramic Terminal Covers
- Power Variation (see page 8-8)

**⚠ WARNING:** Cancer and Reproductive Harm - [www.P65Warnings.ca.gov](http://www.P65Warnings.ca.gov).

**(800) 323-6859 • Email: [sales@tempco.com](mailto:sales@tempco.com)**