

## Specifications & Tolerances

### Standard Specifications and Tolerances of Maxistrip Heaters.

If tighter tolerances are required, consult Tempco.

#### PERFORMANCE RATINGS

**Maximum Sheath Temperature:** 650°F (343°C)

**Maximum Watt Density:** 20 W/in<sup>2</sup> (3.1 W/cm<sup>2</sup>)

#### ELECTRICAL SPECIFICATIONS

**Maximum Voltage:** 277VAC

**Maximum Recommended Voltage w/ Leads:** 240VAC

**Maximum Watts:** Dependent on width and length

**Maximum Amperage:** 25 Amps

**Resistance Tolerance:** +10%, -5%

**Wattage Tolerance:** +5%, -10%

#### PHYSICAL CONSTRUCTION LIMITATIONS

**Widths:** 1-1/2" (38.1 mm), 2-1/2" (63.5 mm), 3" (76.2 mm), 4" (101.6 mm)

**Thickness:** 1/2" (12.7 mm)

**Flatness:** 0.005 per inch of the width

### Screw Terminals

#### Type S Terminal Lugs

Terminal lugs with 10-32 binding head screws are the standard termination for all Maxistrip heaters.



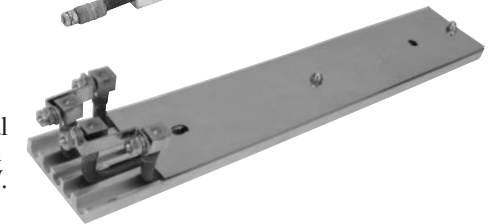
#### Type T1 Straight Terminals

Straight outward screw terminals with 8-32 threads.



#### Type R 90° Blockhead Terminals

90° Blockhead Terminals with 10-32 threads. Special design can switch between 1800W and 900W at 240V.

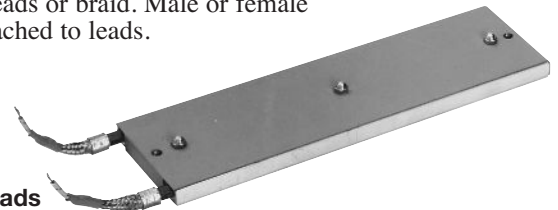


### Abrasion Resistant Terminations

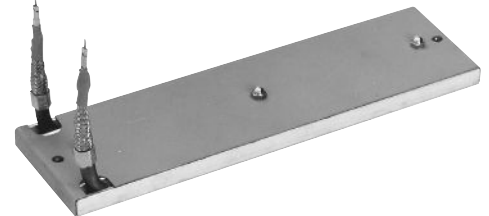
Wire braid provides strength and protection to the lead wire insulation, offering sharp bending not possible with armor cable. 20" of wire braid and 24" flexible leads are standard.

**Options:** Longer leads or braid. Male or female plugs attached to leads.

#### Type W1 Straight Wire Braid Leads



#### Type W2 Straight-Up Wire Braid Leads



### Special Widths



Mounting Holes can be located only along the phantom lines between the holes shown on these drawings.

**Standard Hole Diameter:** 5/16"

**Maximum Hole Diameter:** 1/2"  
(center of width only)

### Mounting Holes

